



CLAMPS

TEST

DIAGNOSTICS

FILTRATION

ACCESSORIES

BALL VALVES



Local Solutions for Individual Customers Worldwide

Stauff Valves

Stauff offers a wide range of Ball Valves, Flow Control, Needle & Check Valves available for fast delivery from local inventory together with the ability to offer custom solutions for special applications.

[TWO-WAY VALVES/
THREADED CONNECTORS](#)

[TWO-WAY VALVES/SAE SPLIT
FLANGE CONNECTORS](#)

[TWO-WAY VALVES/DIRECT
MOUNT SAE FLANGE](#)

[MULTI-WAY VALVES/
THREADED CONNECTORS](#)

[MANIFOLD VALVES](#)

[LOCKING KIT OPTIONS](#)

[SEAL KIT OPTIONS](#)

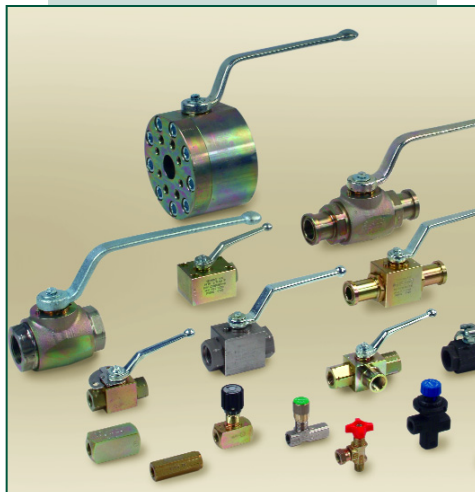
[ACTUATORS/OTHER OPTIONS](#)

[2BVM SERIES TWO PIECE VALVES](#)

[LOW PRESSURE BALL VALVES AND
ADAPTORS](#)

[STAINLESS STEEL 2000 PSI VALVES](#)

[FLOW CONTROL, NEEDLE AND CHECK
VALVES](#)



TWO - WAY VALVES/THREADED CONNECTORS

- High Pressure Hydraulic Ball ValvesV2
- Valve Features / DesignV3
- Block Body High Pressure $\frac{1}{8}$ " - $1\frac{1}{2}$ "V4-5
- Forged Body High Pressure $1\frac{1}{4}$ " - 2"V6-7
- Block Body Medium Duty $\frac{1}{4}$ " - $1\frac{1}{2}$ "V8
- High Pressure Port AdaptorsV9
- 12,000 PSI Series Valves $\frac{1}{4}$ " - 1"V10-11

TWO - WAY VALVES/SAE SPLIT FLANGE CONNECTORS

- Block Body Code 61/62 $\frac{1}{2}$ " - 1"V12-13
- Forged Body Code 61/62 $1\frac{1}{4}$ " - 2"V14-15
- SAE Split / Mating Flange CombinationV16-17
- Direct Mount Code 61/62 Combination $\frac{1}{2}$ " - 2"V18-19
- Direct Mount Code 61 $2\frac{1}{2}$ " - 5"V20-21
- Direct Mount High Pressure DIN Flanges $2\frac{1}{2}$ " - 5"V22-23
- Direct Mount Manifold Style $\frac{1}{2}$ " - 2"V24-25

MULTI - WAY VALVES/THREADED CONNECTORS

- Compact Three-Way Diverter Valves $\frac{1}{8}$ " - 2"V26-27
- Three and Four Multi-Way Valves $\frac{1}{4}$ " - $1\frac{1}{2}$ "V28-29

MANIFOLD VALVES

- Two-Way, $\frac{1}{4}$ " - 2"V30-31

LOCKING KIT OPTIONSV32

SEAL KITSV33

ACTUATORS/OTHER OPTIONSV34-36

TWO PIECE VALVES - 2BVM SERIESV37

LOW PRESSURE BALL VALVES AND ADAPTORS

- Low Pressure Ball Valves $\frac{1}{4}$ " - 4"V38-39
- Low Pressure Port AdaptorsV40-41

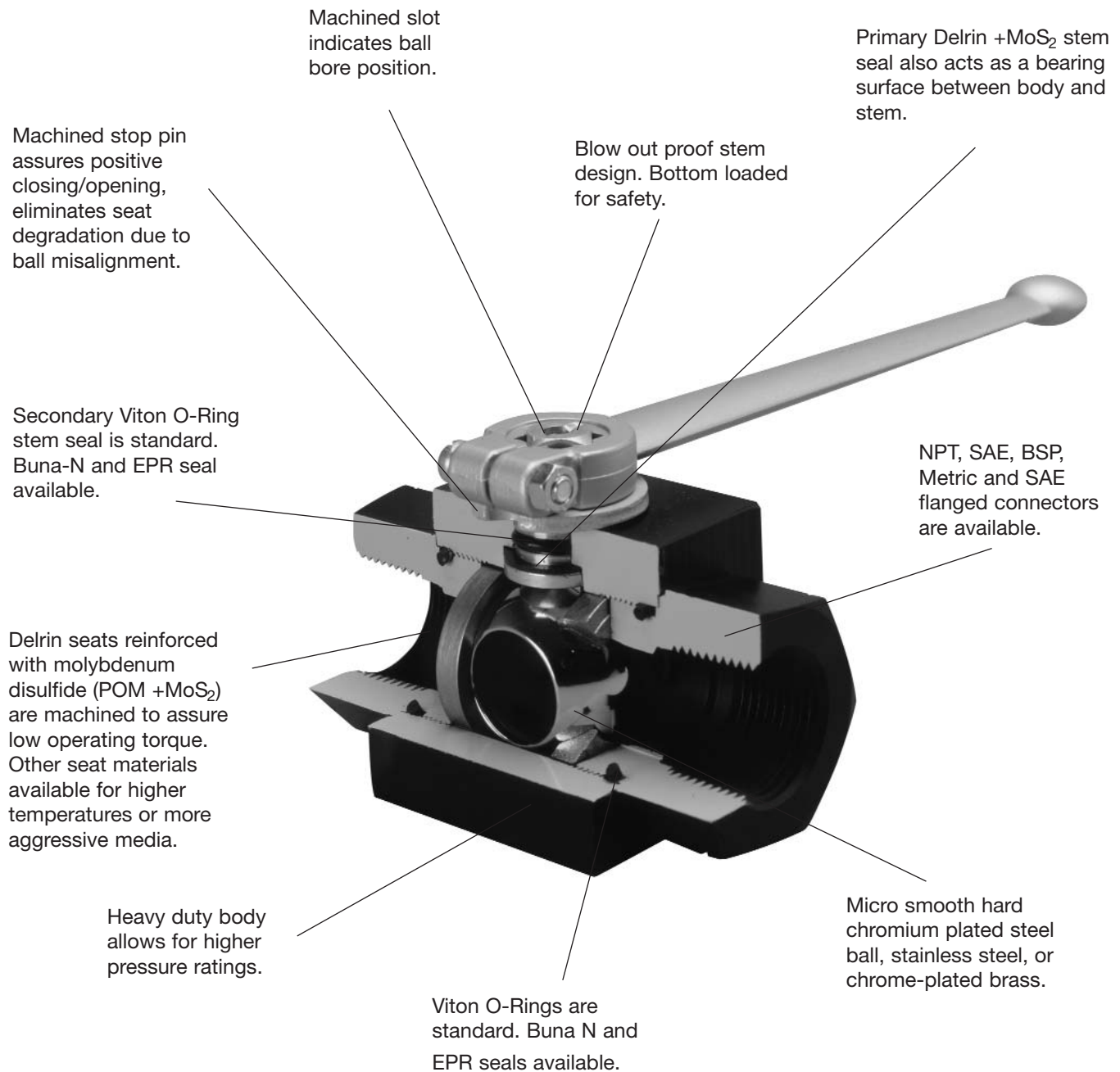
STAINLESS STEEL 2000 PSI VALVES

- 2BVM Series - Two-Way ValveV42
- 2BMV3 Series - Three-Way ValveV43
- 3BVM Series - Three Piece, Two-Way ValveV44

FLOW CONTROL, NEEDLE AND CHECK VALVES

- Check Valves - RV & RVM SeriesV45-46
- Needle Valves - NDV & NVH SeriesV47-49
- Flow Control Valves - NDRV & FCH SeriesV50-52
- Pressure Compensated Flow Control Valves - PNDRV SeriesV53
- Needle Valves - Medium Pressure (3000 PSI) - NVM SeriesV54
- Flow Control Valves - Medium Pressure (3000 PSI) - FCM SeriesV55
- Panel Mounting KitsV56
- Gauge Isolator Valves - SWS SeriesV57
- Gauge Isolator Needle Valves - SWS SeriesV58

**FULL FLOW AND POSITIVE SHUT-OFF
UP TO 12,000 PSI**



Dimensions are for general information only. Due to constant development and updating of technical details, we ask that all critical dimensions be verified by requesting a certified print.

Features

- Available in carbon, stainless steel or brass.
- 1/4 turn positive operation.
- Depending on size and materials, working pressures up to 12,000 PSI and temperatures up to 930°F can be accommodated.
- No lubrication or maintenance required for the life of the valve.
- All Stauff valves are easily and completely repairable.
- All Stauff valves offer completely bidirectional operation, eliminating any chance of incorrect installation.
- No threads in fluid service to contaminate flow or cause turbulence.
- "Floating Ball" design insures a positive, leak-free seal and automatically compensates for any seat wear or misalignment.
- Hard chromium plated micro-smooth ball greatly reduces friction and seat wear.
- Ball seats are available in a variety of materials to suit your special applications.
- Full size ports on most two-way valves virtually eliminates pressure drop. Cv factor is usually equal to a length of pipe the same length and diameter as the valve.
- All Stauff valves are proof tested to 1.5 times the maximum rated working pressure before shipment from manufacturing facilities.
- Long seal life.

Available Options

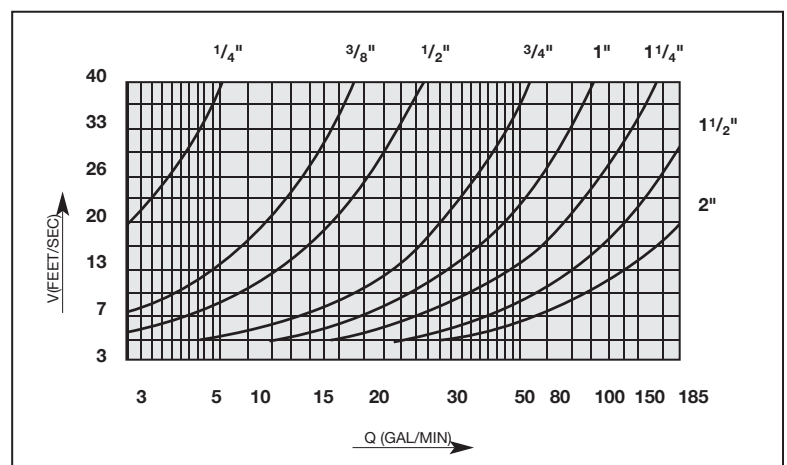
- Locking or detent type handles
- Pneumatic or electric actuator
- Special service seat and seal combinations
- Panel mounted valves
- Tandem mounted valves
- Special threads and connections
- Custom design valves
- Limit/proximity switches

Contact STAUFF for special requirements.

Note: Stauff ball valves are designed for use as on/off devices and must not be used to throttle fluid flow. Use in any position other than fully open or fully closed can lead to rapid deterioration of valve components and possible product failure.

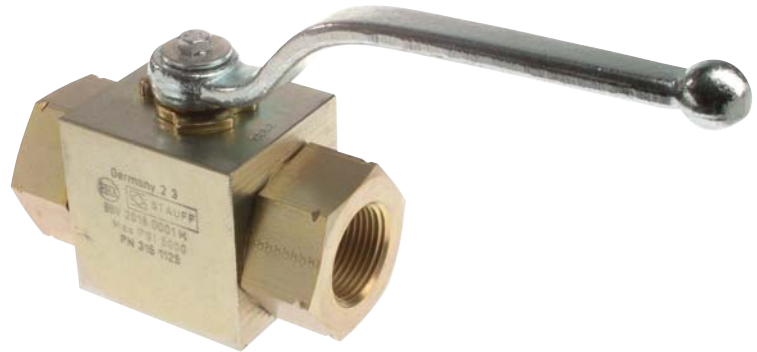
When operated from the fully closed position at rated operating pressure, manual operation may prove difficult due to opening torque requirements. Please consult factory prior to field application.

Valve Selection Chart



Specifications

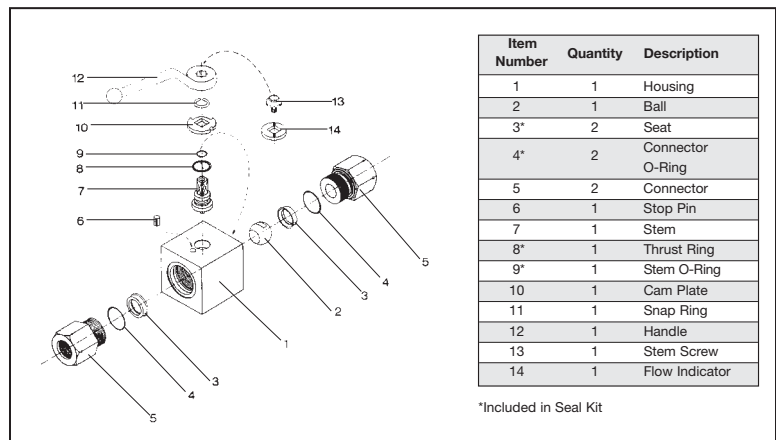
- Block Body, High Pressure Shut-off Valves
- 1/8"-1" Fully Ported-(1 1/4" & 1 1/2" with reduced bore)
- NPT, BSP or SAE O-Ring Connectors
- Delrin +MoS2 Ball Seats
- Viton O-Ring
- Pressure Range: Up to 7250 PSI (500 bar) (depending on material combination and size)
- Standard Carbon Steel Construction
- Standard Temperature Range: -20°F to 212°F (-17°C to 100°C)
- Zinc Plated Body
- Hard Chrome Plated Steel Ball



Options

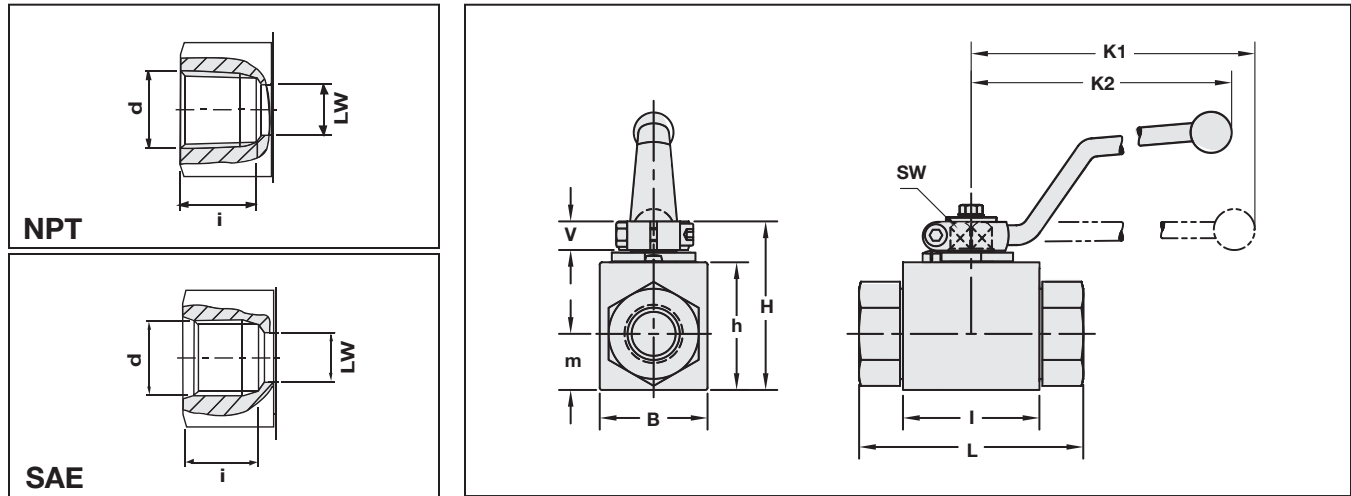
- Locking Kits
- Limit Switch
- Actuator Packages Available
- Straight Handles
- Stainless Steel Body
- Stainless Steel Ball and Stem
- Special seat and "O"-Ring materials available for higher temperatures or more aggressive media.

Technical Information



Size		Part Number	Maximum Working Pressure		Size		Part Number	Maximum Working Pressure	
			PSI	Bar				PSI	Bar
1/8"	NPT	BBV20020001M	7250 PSI	500	3/4"	NPT	BBV20120001M	5000 PSI	345
	SAE	BBV21020001M	7250 PSI	500		SAE	BBV21120001M	5000 PSI	345
1/4"	NPT	BBV20040001M	7250 PSI	500	1"	NPT	BBV20160001M	5000 PSI	345
	SAE	BBV21040001M	7250 PSI	500		SAE	BBV21160001M	5000 PSI	345
3/8"	NPT	BBV20060001M	7250 PSI	500	1 1/4"	NPT	BBV20200001M	5000 PSI	345
	SAE	BBV21060001M	7250 PSI	500		SAE	BBV21200001M	5000 PSI	345
1/2"	NPT	BBV20080001M	7250 PSI	500	1 1/2"	NPT	BBV20240001M	3600 PSI	250
	SAE	BBV21080001M	7250 PSI	500		SAE	BBV21240001M	3600 PSI	250

Dimensional Information



Size	d NPT	d SAE	i NPT	i SAE	L NPT	L SAE	LW NPT	LW SAE	I	B	H	h	m	V	SW	K ₁	K ₂	Weight	
			in mm	in mm	in mm	in mm	in mm	in mm	in mm	in mm	in mm	in mm	in mm	in mm	in mm	in mm	in mm	in mm	lbs kg
⅝"	⅝-27	—	0.51 12.95	0.55 13.97	2.72 69.09	2.72 69.09	0.24 6.10	0.2	1.57 39.88	1.02 25.91	1.85 46.99	1.30 33.02	0.53 13.46	0.43 10.92	0.35 9	5.91 150.11	4.53 115.06	0.50 0.23	
¼"	¼-18	⅞-20	0.67 17.02	0.69 17.53	2.72 69.09	2.72 69.09	0.24 6.10	0.2	1.57 39.88	1.02 25.91	1.85 46.99	1.30 33.02	0.53 13.46	0.43 10.92	0.35 9	5.91 150.11	4.53 115.06	0.66 0.30	
⅜"	⅜-18	⅞-18	0.69 17.53	0.61 15.49	3.07 77.98	2.83 71.88	0.39 10	0.39	1.69 42.93	1.26 32.00	2.05 52.07	1.50 38.10	0.69 17.53	0.43 10.92	0.35 9	5.91 150.11	4.53 115.06	1.10 0.50	
½"	½-14	¾-16	0.98 24.89	0.69 17.53	4.09 103.89	3.27 83.06	0.51 13	0.51	1.89 48.01	1.38 35.05	2.13 54.10	1.57 39.88	0.75 19.05	0.43 10.92	0.35 9	5.91 150.11	4.53 115.06	1.65 0.75	
¾"	¾-14	1⅞-12	0.91 23.11	0.91 23.11	4.02 102.11	3.74 95.00	0.79 20	0.79	2.44 61.98	1.93 49.02	2.95 74.93	2.24 56.90	0.96 24.38	0.55 13.97	0.55 14	7.87 199.90	6.30 160.02	3.65 1.66	
1"	1-11½	1⅞-12	1.09 27.69	0.91 23.11	4.69 119.13	4.45 113.03	0.98 25	0.98	2.60 66.04	2.28 57.91	3.27 83.06	2.56 65.02	1.16 29.46	0.55 13.97	0.55 14	7.87 199.90	6.30 160.02	5.06 2.30	
1¼"	1¼-11½	1⅞-12	1.10 27.94	0.91 23.11	5.10 129.54	5.10 129.54	0.98 25	0.98	2.60 66.04	2.28 57.91	3.27 83.06	2.56 65.02	1.16 29.46	0.55 13.97	0.55 14	7.87 199.90	6.30 160.02	5.50 2.50	
1½"	1½-11½	1⅞-12	1.19 30.23	0.91 23.11	5.20 132.08	5.20 132.08	0.98 25	0.98	2.60 66.04	2.28 57.91	3.27 83.06	2.56 65.02	1.16 29.46	0.55 13.97	0.55 14	7.87 199.90	6.30 160.02	5.75 2.61	

Ordering Information

BBV 2 0 16 0 0 0 1 M - LD													
Body Style Block Body Style		Number of Ports		Connection Style 0 - NPT Female 1 - SAE " R - BSPP "		Connector Size 02 - ⅛" (NPT Only) 04 - ¼" 06 - ⅜" 08 - ½" 12 - ¾" 16 - 1" 20 - 1½" * 24 - 1⅞" * *Reduced Bore (1" ~25mm)		Body Material 0 - Carbon Steel - Zinc Plated 1 - 316 Stainless		Ball & Stem Material 0 - Carbon Steel (standard) 1 - 316 Stainless Steel		Locking Kit LD - Locking Device OMIT - No Locking Device	
												Manufacturing Code	
								O Ring Material 1 - Viton standard (FPM)		Ball Seat Material 0 - Delrin (standard)			

Specifications

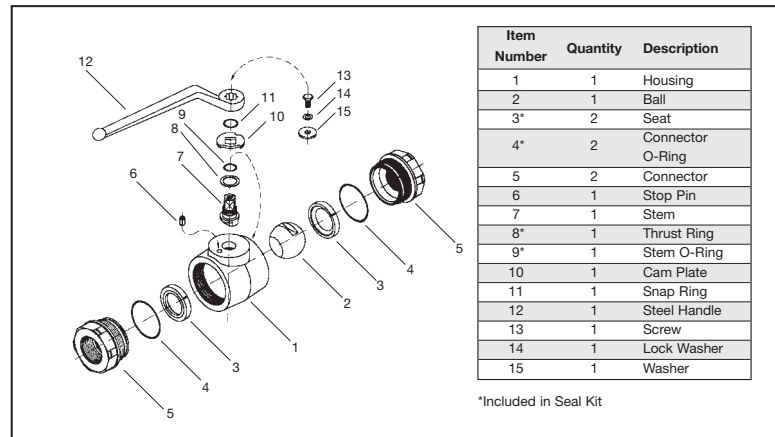
- Forged Body, High Pressure Valves
- 1¼" – 2" Fully Ported
- NPT, BSP or SAE O-Ring Connections
- Delrin +MoS2 Ball Seats
- Viton O-Rings
- Steel Handle
- Pressure Range: Up to 5000 PSI (345 bar)
- Carbon Steel Construction
- Temperature Range: -20°F to 212°F
(-28°C to 100°C)
- Zinc Plated Body

Options

- Locking Kits
- Limit Switches
- Stainless Steel Body
- Stainless Steel Ball and Stem
- Straight Handles
- Actuator Packages Available
- Special seat and "O"-Ring materials available for higher temperatures or more aggressive media.

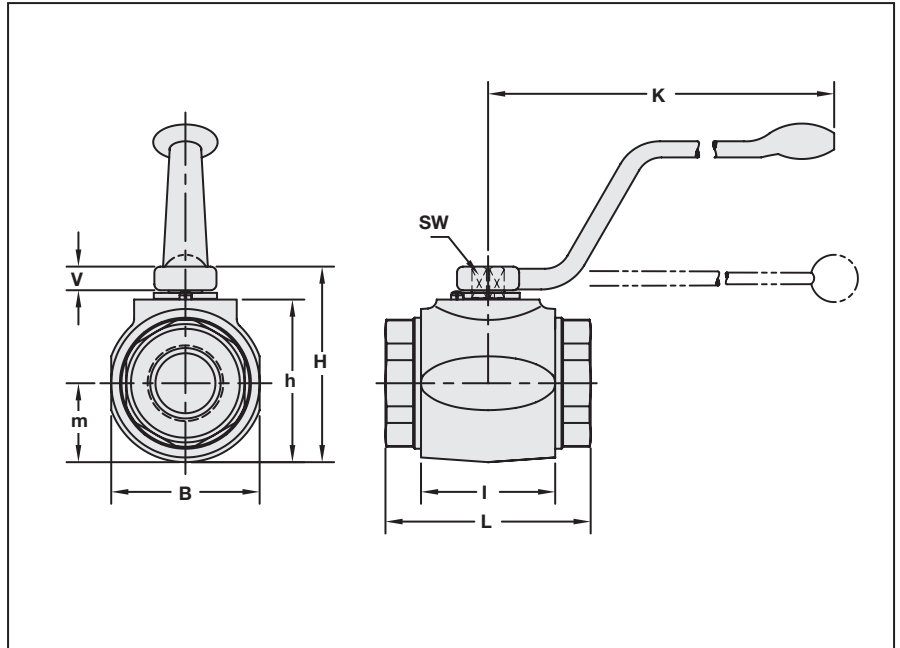
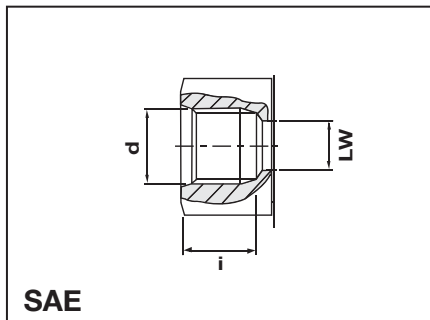
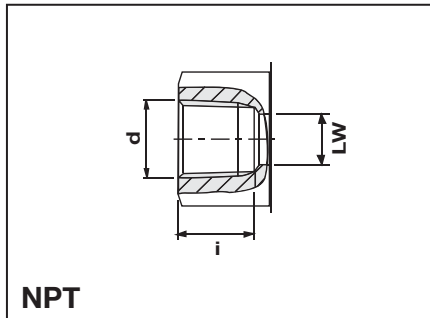


Technical Information



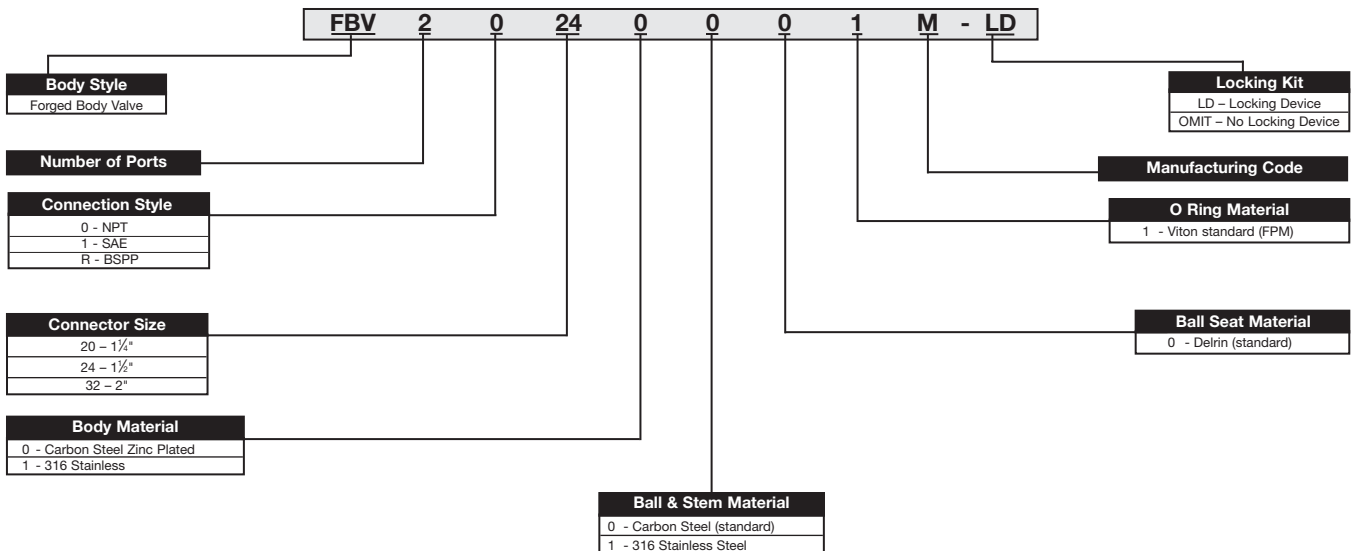
Size		Part Number	Maximum Working Pressure	
			PSI	Bar
1¼"	NPT	FBV20200001M	5000 PSI	345
	SAE	FBV21200001M	5000 PSI	345
1½"	NPT	FBV20240001M	5000 PSI	345
	SAE	FBV21240001M	5000 PSI	345
2"	NPT	FBV20320001M	5000 PSI	345
	SAE	FBV21320001M	5000 PSI	345

Dimensional Information



Size	d NPT	d SAE	i NPT	i SAE	L NPT	L SAE	LW NPT	LW SAE	I	B	H	h	m	V	SW	K	Weight
			in mm	in mm	in mm	in mm	in mm	in mm	in mm	in mm	in mm	in mm	in mm	in mm	in mm	in mm	lbs kg
1¼"	1¼-11½	1½-12	1.11 28.19	0.91 23.11	4.72 119.89	4.37 111.00	1.26 32.00	1.18 29.97	3.15 80.01	3.19 81.03	4.21 106.93	3.39 86.11	1.59 40.39	0.65 16.51	.66 17	11.81 300	8.04 3.65
1½"	1½-11½	1½-12	1.1 27.94	0.91 23.11	5.12 130.05	5.12 130.05	1.50 38.10	1.50 38.10	3.35 85.09	3.94 100.08	4.88 123.95	4.06 103.12	1.97 50.04	0.65 16.51	.66 17	11.81 300	13.00 5.91
2"	2-11½	2½-12	1.19 30.23	0.91 23.11	5.51 139.95	5.51 139.95	1.89 48.01	1.77 44.96	3.94 100.08	4.65 118.11	5.43 137.92	4.61 117.09	2.32 58.93	0.65 16.51	.66 17	11.81 300	19.00 8.64

Ordering Information



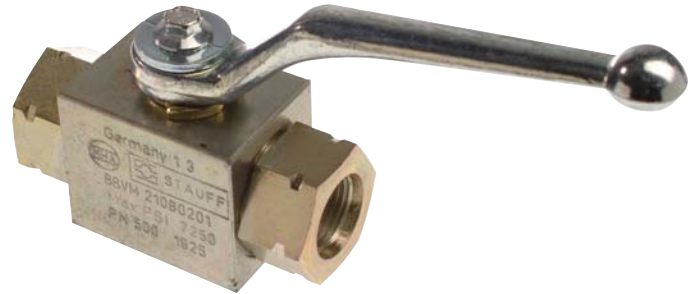
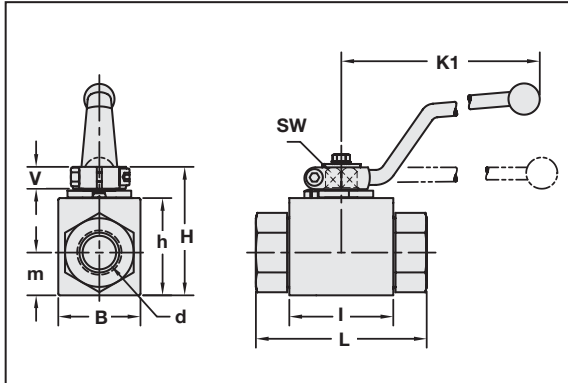
Specifications

- Block Body, Medium Duty
- 50,000 Cycle Seal Life
- NPT, BSP and SAE Ports Available
- 1/4" - 1 1/2" Sizes Available
- Fully Ported
- Carbon Steel Body
- Chrome Plated Brass Ball
- Temperature Range: -14°F to 212°F
(-10°C to 100°C)
(depending on material combinations)

Options

- Locking Kits
- Limit Switches
- Straight Handles

Dimensional Information



See Page V4 for Pressure Rating

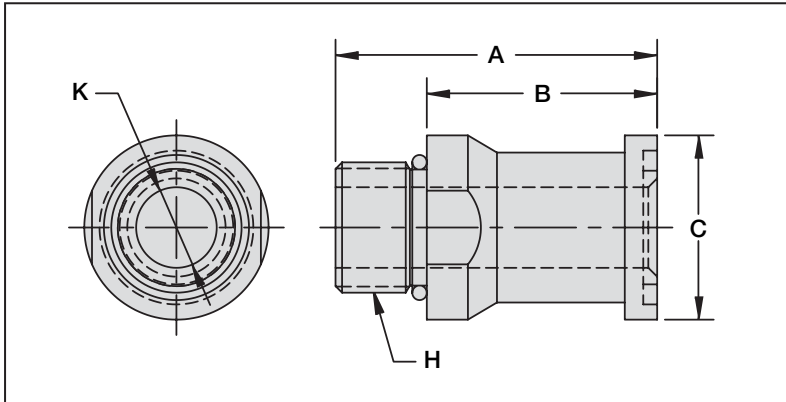
Part #	Size	d NPT	d SAE	L NPT	L SAE	I	B	H	h	m	V	SW	K ₁	Weight	Max. Working Pressure
				in mm	in mm	in mm	in mm	in mm	in mm	in mm	in mm	in mm	in mm	lb kg	PSI Bar
BBVM 20040201 BBVM 21040201	1/4"	1/8-18	7/16-20	2.72 69.09	2.72 69.09	1.57 39.88	1.02 25.91	1.85 46.99	1.30 33.02	0.53 13.46	0.43 10.92	0.35 9	4.53 115.06	0.66 0.30	7250 500
BBVM 20060201 BBVM 21060201	3/8"	1/8-18	9/16-18	3.07 77.98	2.83 71.88	1.69 42.93	1.26 32.00	2.05 52.07	1.50 38.10	0.69 17.53	0.43 10.92	0.35 9	4.53 115.06	1.10 0.50	7250 500
BBVM 20080201 BBVM 21080201	1/2"	1/4-14	5/8-16	4.09 103.89	3.27 83.06	1.89 48.01	1.38 35.05	2.13 54.10	1.57 39.88	0.75 19.05	0.55 14	0.35 9	4.53 115.06	1.65 0.75	7250 500
BBVM 20120201 BBVM 21120201	3/4"	3/8-14	1 1/8-12	4.02 102.11	3.74 95.00	2.44 61.98	1.93 49.02	2.95 74.93	2.24 56.90	0.90 22.86	0.55 14	0.55 14	6.81 172.97	3.65 1.66	5000 345
BBVM 20160201 BBVM 21160201	1"	1-11 1/2	1 1/2-12	4.69 119.13	4.45 113.03	2.60 66.04	2.28 57.91	3.27 83	2.56 65	1.16 29.46	0.55 14	0.55 14	7.87 199.90	5.06 2.30	5000 345
BBVM 20200201 BBVM 21200201	1 1/4"	1 1/4-11 1/2	1 3/4-12	5.10 130	5.10 130	2.60 66	2.28 58	3.27 83	2.56 65	1.16 29.5	0.55 14	0.55 14	7.87 200	5.5 2.5	3600 250
BBVM 20240201 BBVM 21240201	1 1/2"	1 1/2-11 1/2	1 7/8-12	5.2 82	5.2 132	2.60 66	2.28 58	3.27 83	2.56 65	1.16 29.5	0.55 14	0.55 14	7.87 200	5.75 2.6	3600 250

Ordering Information

BBVM 2 0 08 0 2 0 1 - LD															
Product Type Block Body Valve-Medium Pressure				Connector Size 04 – 1/4" 06 – 3/8" 08 – 1/2" 12 – 3/4" 16 – 1" * 20 – 1 1/4 * 24 – 1 1/2 * Reduced Bore(1")				Locking Kit LD – Locking Device OMIT – No Locking Device				O Ring Material 1 - Viton			
Number of Ports															
Thread Type 0 – NPT 1 – SAE R – BSP												Seat Material 0 – Delrin			
Body Material 0 – Carbon Steel Zinc Plated												Ball Material 2 – Brass-Chrome Plated			

* Reduced Bore

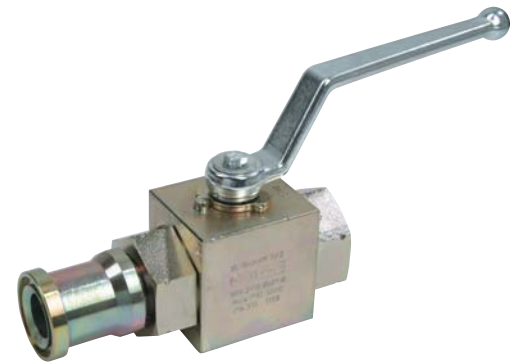
Split Flange End Connection Adaptor



Use these Carbon Steel (Zinc Plated) adaptors to extend the application range of Stauff SAE Threaded Valves by using High Pressure Adaptors on one or both ports. Maximum pressure to 7250 PSI (500 bar).

Part Number	Tube O.D.	Flange Size		A	B	C	H Thread	K
		Code 61	Code 62					
				in mm	in mm	in mm		in mm
302-12-12	3/4"	3/4"		2.48 62.99	1.88 47.75	1.50 38.10	1 1/16 -12	0.66 16.76
302-16-16	1"	1"		2.48 62.99	1.88 47.75	1.75 44.45	1 1/8 -12	0.88 22.35
302-20-20	1 1/4"	1 1/4"		3.00 76.20	2.4 60.96	2.00 50.80	1 1/2 -12	1.1 27.94
302-24-24	1 1/2"	1 1/2"		3.01 76.45	2.41 61.21	2.38 60.45	1 5/8 -12	1.3 33.02
302-32-32	2"	2"		3.50 88.90	2.4 60.96	2.81 71.37	2 1/2 -12	1.8 45.72
602-12-12	3/4"		3/4"	2.48 62.99	1.88 47.75	1.62 41.15	1 1/16 -12	0.66 16.76
602-16-16	1"		1"	2.48 62.99	1.88 47.75	1.87 47.50	1 1/8 -12	0.88 22.35
602-20-20	1 1/4"		1 1/4"	2.82 71.62	2.23 56.64	2.12 53.85	1 1/2 -12	1.1 27.94
602-24-24	1 1/2"		1 1/2"	3.19 81.03	2.41 61.21	2.50 63.50	1 5/8 -12	1.3 33.02
602-32-32	2"		2"	3.60 91.44	3 76.20	3.12 79.25	2 1/2 -12	1.8 45.72

*Note: Pressure rating of valve determines assembly pressure rating.



Step sizes are available.
Consult factory for information.

Specifications

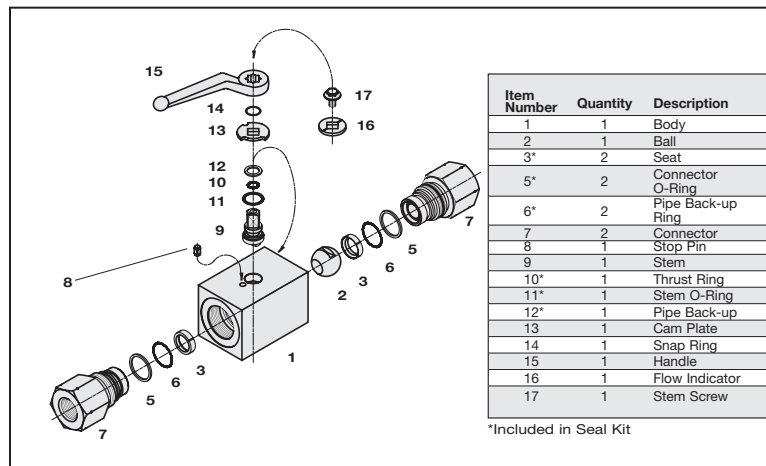
- 12,000 PSI (825 bar) Working Pressure
- Two-Way Valves
- 1/4" – 1" Fully Ported
- NPT and SAE Threaded Connections
- Temperature Range: -30°F to 212°F
(-34°C to 100°C)
- Peek Seat Material
- Carbon Steel
- Zinc Plated Body

Options

- Stainless Steel Construction
- Limit Switches
- Actuator Packages Available

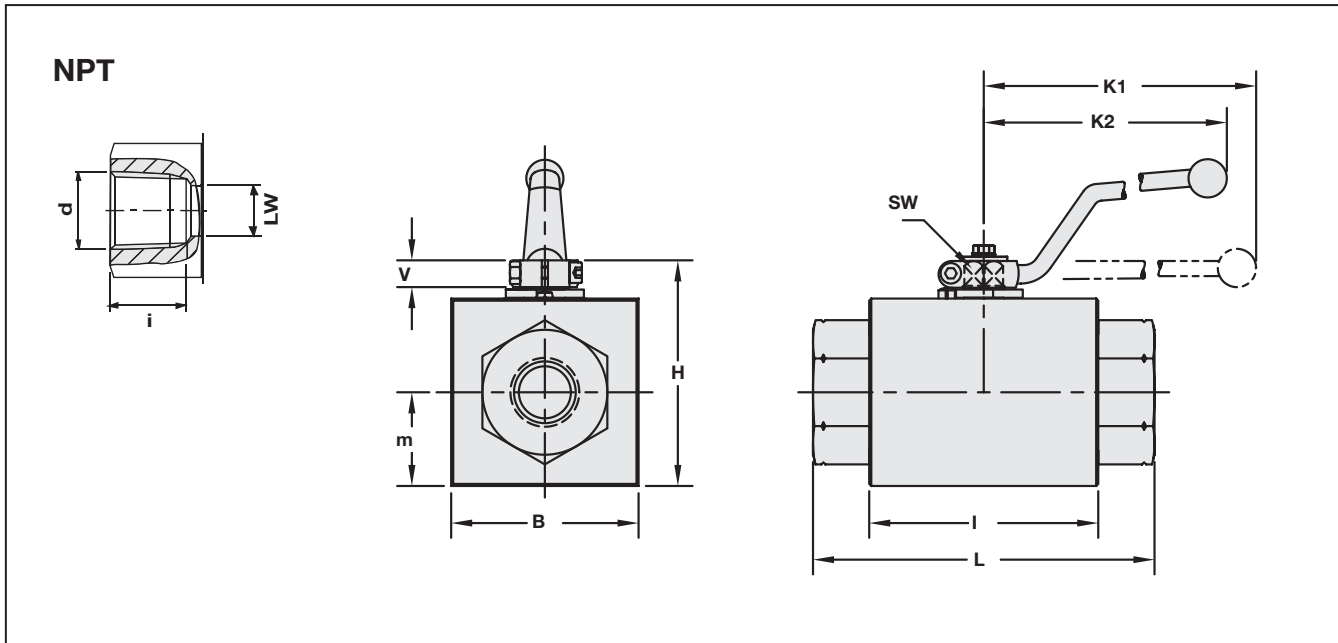


Technical Information



Size		Part Number	Maximum Working Pressure	
			PSI	Bar
1/4"	NPT	HBV20040001M	12,000 PSI	825
3/8"	NPT	HBV20060001M	12,000 PSI	825
1/2"	NPT	HBV20080001M	12,000 PSI	825
3/4"	NPT	HBV20120001M	12,000 PSI	825
1"	NPT	HBV20160001M	12,000 PSI	825

Dimensional Information



Size	d NPT	i NPT	LW	L	I	B	H	m	V	SW	K ₁	K ₂	Weight
			mm in	mm in	mm in	mm in	mm in	mm in	mm in	mm in	mm in	mm in	kg lb
1/4"	1/4-18	0.67	6 0.24	130 5.12	76 2.99	50 1.97	64 2.52	25 0.98	11 0.43	9 0.35	150 5.91	115 4.53	1.3 2.86
3/8"	3/8-18	0.69	10 0.39	130 5.12	76 2.99	50 1.97	64 2.52	25 0.98	11 0.43	9 0.35	150 5.91	115 4.53	1.3 2.86
1/2"	1/2-14	0.98	13 0.51	130 5.12	76 2.99	50 1.97	64 2.52	25 0.98	11 0.43	9 0.35	150 5.91	115 4.53	1.3 2.86
3/4"	3/4-14	0.91	20 0.79	161 6.34	111 4.37	90 3.54	108 4.25	45 1.77	14 0.55	14 0.55	200 7.87	160 6.30	5.6 12.32
1"	1-11 1/4	1.09	25 0.98	164 6.46	111 4.37	90 3.54	108 4.25	45 1.77	14 0.55	14 0.55	1200 7.87	160 6.30	5.6 12.32

Ordering Information

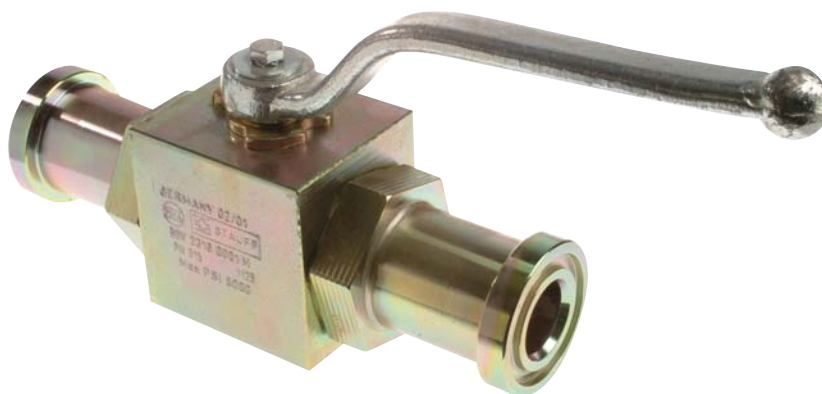
HBV	2	0	12	0	0	0	0	1	M	LD
Product Type HBV – 12,000 PSI High Pressure Valve			Connector Size 02 – 1/8" 04 – 1/4" 06 – 3/8" 08 – 1/2" 12 – 3/4" 16 – 1"							Locking Kit LD – Locking Device OMIT – No Locking Device
No. of Ports										Manufacturing Code
Connector Style 0 – NPT										O Ring Material 1 – Viton
Body Material 0 – Carbon Steel Zinc Plated 1 – 316 Stainless Steel									Ball Seat Material 0 – Peer	Ball & Stem Material 0 – Carbon Steel 1 – 316 Stainless Steel

Specifications

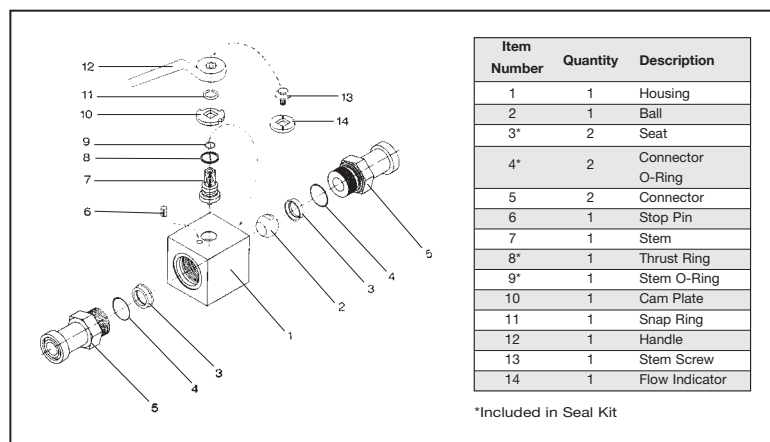
- 1/2", 3/4" & 1" Block Body Style
- SAE Code 61 & 62 (SAE Standard J518)
- Split Flange Connectors
- Delrin +MoS2 Ball Seats
- Viton O-Rings
- Carbon Steel Construction Standard;
- Temperature Range: -14°F to 212°F
(-10°C to 100°C)
- Zinc Plated Body

Options

- Split Flange Kits Available
SF Series for Both Code 61 & Code 62
(see page A39)
- Stainless Steel
- Locking Kits
- Limit Switches
- Actuator Packages Available
- Straight Handles
- Special Seat and "O"-Ring Materials
Available for Higher Temperatures or
Aggressive Media

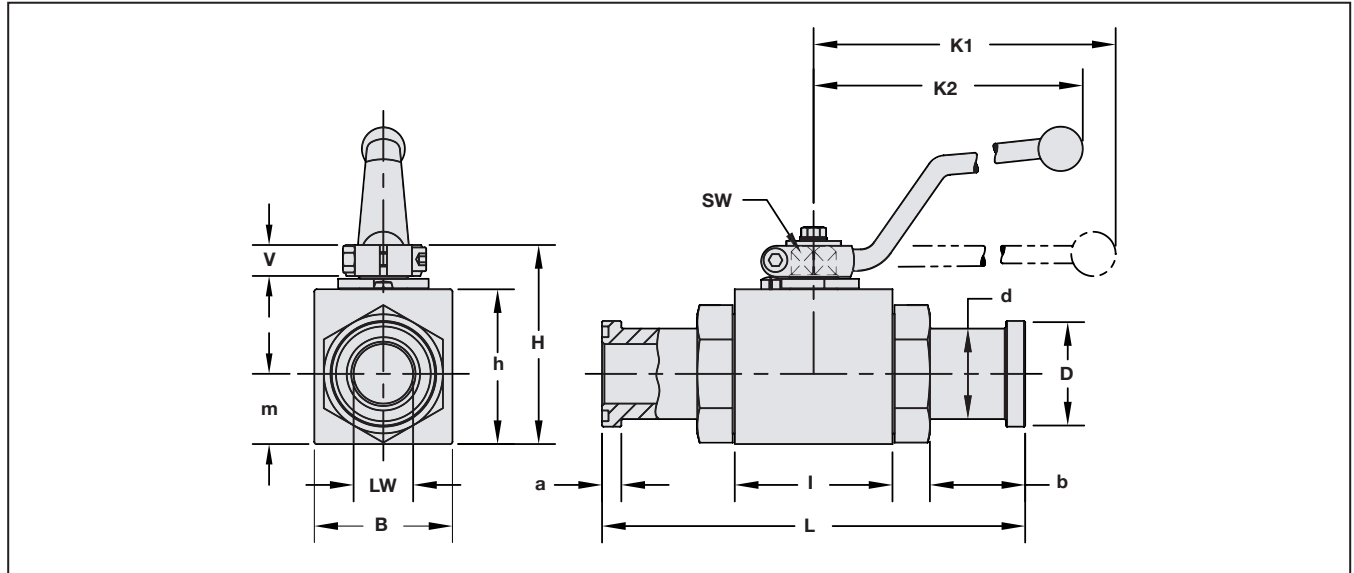


Technical Information



Size		Part Number Without Flanges	Part Number With Flanges	Maximum Working Pressure	
				PSI	Bar
1/2"	CODE 61	BBV22080001M	BBV22080001M/SF	5000	345
	CODE 62	BBV23080001M	BBV23080001M/SF	6000	420
3/4"	CODE 61	BBV22120001M	BBV22120001M/SF	5000	345
	CODE 62	BBV23120001M	BBV23120001M/SF	5000	345
1"	CODE 61	BBV22160001M	BBV22160001M/SF	5000	345
	CODE 62	BBV23160001M	BBV23160001M/SF	5000	345

Dimensional Information



Code 61

Size	LW	L	I	B	H	h	m	V	SW	K1	K2	D	d	a	b	Weight
	in mm	in mm	in mm	in mm	in mm	in mm	in mm	in mm	in mm	in mm	in mm	in mm	in mm	in mm	in mm	lbs kg
1/2"	0.51 12.95	5.94 150.88	1.89 48.01	1.38 35.05	2.13 54.10	1.57 39.88	0.75 19.05	0.43 10.92	0.35 9	5.91 150.11	4.53 115.06	1.19 30.23	0.94 23.88	0.27 6.86	1.73 43.94	2.0 0.91
3/4"	0.75 19.05	6.38 162.05	2.44 61.98	1.93 49.02	2.95 74.93	2.24 56.90	0.96 24.38	0.55 13.97	0.55 14	7.87 199.90	6.30 160.02	1.50 38.10	1.25 31.75	0.27 6.86	1.67 194.82	3.5 1.59
1"	0.98 24.89	7.01 178.05	2.60 66.04	2.28 57.91	3.27 83.06	2.56 65.02	1.16 29.46	0.55 13.97	0.55 14	7.87 199.90	6.30 160.02	1.75 44.45	1.50 38.10	0.32 8.13	1.57 39.88	5.0 2.27

Code 62

Size	LW	L	I	B	H	h	m	V	SW	K1	K2	D	d	a	b	Weight
	in mm	in mm	in mm	in mm	in mm	in mm	in mm	in mm	in mm	in mm	in mm	in mm	in mm	in mm	in mm	lbs kg
1/2"	0.51 12.95	5.94 150.88	1.89 48.01	1.38 35.05	2.13 54.10	1.57 39.88	0.75 19.05	0.43 10.92	0.35 9	5.91 150.11	4.53 115.06	1.25 31.75	0.94 23.88	0.31 7.87	1.57 39.88	2.0 0.91
3/4"	0.75 19.05	6.85 162.05	2.44 61.98	1.93 49.02	2.95 74.93	2.24 56.90	0.96 24.38	0.55 13.97	0.55 14	7.87 199.90	6.30 160.02	1.63 41.40	1.25 31.75	0.35 8.89	1.85 46.99	3.5 1.59
1"	0.87 24.89	7.80 178.05	2.60 66.04	2.28 57.91	3.27 83.06	2.56 65.02	1.16 29.46	0.55 13.97	0.55 14	7.87 199.90	6.30 160.02	1.87 47.50	1.50 38.10	0.38 9.65	1.97 50.04	5.0 2.27

Ordering Information

BBV 2 2 08 0 0 0 1 M - LD															
Product Type Block Body Valve		Connector Size 08 - 1/2" 12 - 3/4" 16 - 1"		Locking Kit LD - Locking Device OMIT - No Locking Device		Manufacturing Code		O Ring Material 1 - Viton		Seat Material 0 - Delrin		Ball & Stem Material 0 - Carbon Steel 1 - 316 Stainless Steel			
No. of Ports															
Connector Type 2 - SAE CODE 61 3 - SAE CODE 62															
Body Material 0 - Carbon Steel Zinc Plated 1 - 316 Stainless Steel															

Specifications

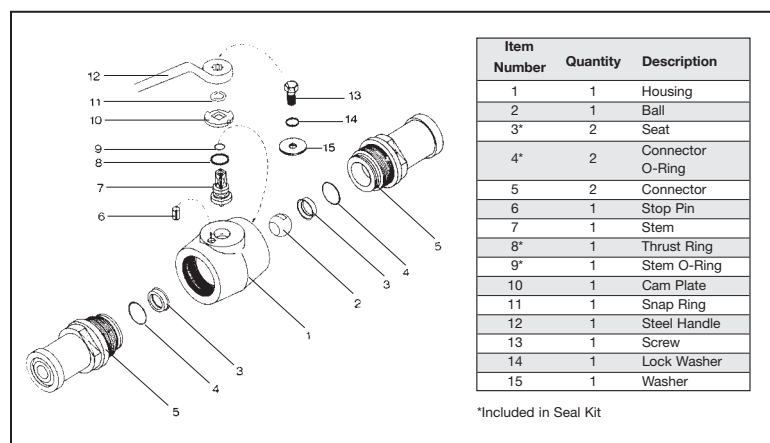
- 1¼", 1½" & 2" Forged Body Style
- Pressure Range: Up to 6000 PSI (400 bar)
- SAE Code 61 & 62 (SAE Standard J518)
- Split Flange Connectors
- Delrin +MoS2 Ball Seats
- Viton O-Rings
- Carbon Steel Construction
- Steel Handle
- Temperature Range: -20°F to 212°F
(-28°C to 100°C)
- Zinc Plated Body

Options

- Split Flange Kits Available
SF Series for Both Code 61 & Code 62
(see page A39)
- Straight Handle
- Locking Kits
- Limit Switches
- Actuator Packages Available
- Stainless Steel
- Special Seat and "O"-Ring Materials
Available for Higher Temperatures or More
Aggressive Media

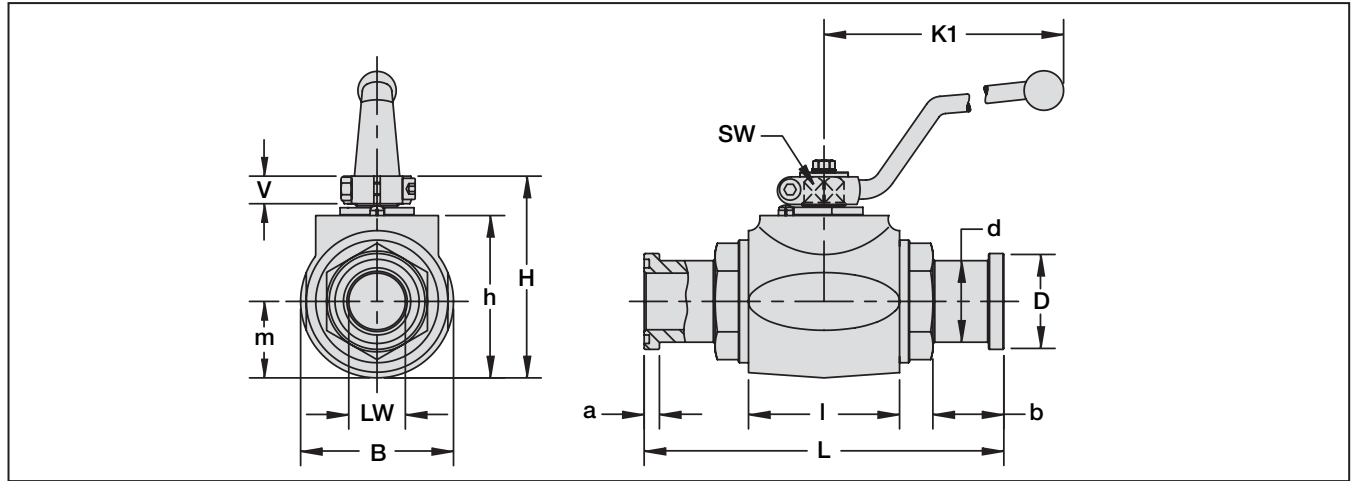


Technical Information



Size		Part Number Without Flanges	Part Number With Flanges	Maximum Working Pressure	
				PSI	Bar
1¼"	CODE 61	FBV22200001M	FBV22200001M/SF	3000 PSI	210
	CODE 62	FBV23200001M	FBV23200001M/SF	6000 PSI	420
1½"	CODE 61	FBV22240001M	FBV22240001M/SF	3000 PSI	210
	CODE 62	FBV23240001M	FBV23240001M/SF	6000 PSI	420
2"	CODE 61	FBV22320001M	FBV22320001M/SF	3000 PSI	210
	CODE 62	FBV23320001M	FBV23320001M/SF	6000 PSI	420

Dimensional Information



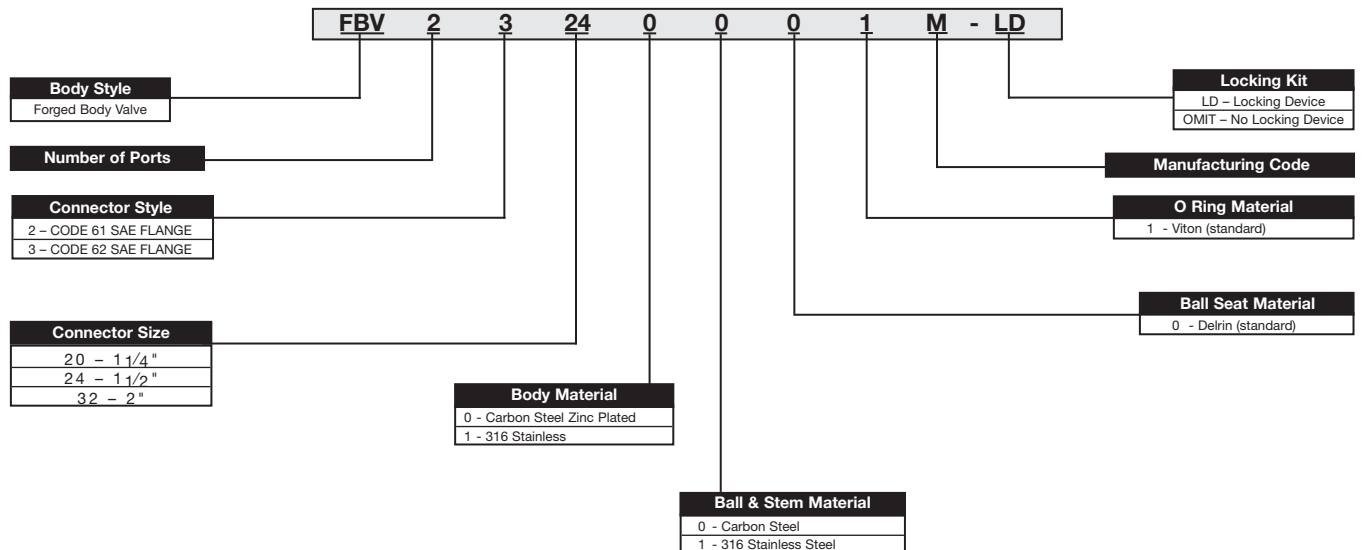
Code 61

Size	LW	L	I	B	H	h	m	V	SW	K1	D	d	a	b	Weight
	in mm	in mm	in mm	in mm	in mm	in mm	in mm	in mm	in mm	in mm	in mm	in mm	in mm	in mm	lbs kg
1 1/4"	1.18 29.97	7.50 190.50	3.15 80.01	3.19 81.03	4.21 106.93	3.39 86.11	1.59 40.39	0.65 16.51	0.67 17	11.81 299.97	2.00 50.80	1.70 43.18	0.32 8.13	1.38 35.05	8 3.64
1 1/2"	1.42 36.07	9.09 230.89	3.35 85.09	3.94 100.08	4.88 123.95	4.06 103.12	1.97 50.04	0.65 16.51	0.67 17	11.81 299.97	2.37 60.20	1.98 50.29	0.32 8.13	2.09 53.09	14 6.36
2"	1.89 48.01	9.13 231.90	3.94 100.08	4.65 118.11	5.43 137.92	4.61 117.09	2.32 58.93	0.65 16.51	0.67 17	11.81 299.97	2.81 71.37	2.45 62.23	0.38 9.65	1.81 45.97	20 9.09

Code 62

Size	LW	L	I	B	H	h	m	V	SW	K1	D	d	a	b	Weight
	in mm	in mm	in mm	in mm	in mm	in mm	in mm	in mm	in mm	in mm	in mm	in mm	in mm	in mm	lbs kg
1 1/4"	1.06 26.92	8.78 223.01	3.15 80.01	3.19 81.03	4.21 106.93	3.39 86.11	1.59 40.39	0.65 16.51	0.67 17	11.81 299.97	2.13 54.10	1.73 43.94	0.41 10.41	2.01 51.05	8.5 3.86
1 1/2"	1.26 32.00	11.06 280.92	3.35 85.09	3.94 100.08	4.88 123.95	4.06 103.12	1.97 50.04	0.65 16.51	0.67 17	11.81 299.97	2.50 63.50	2.01 51.05	0.50 12.70	3.07 77.98	15 6.82
2"	1.77 44.96	12.44 315.98	3.94 100.08	4.65 118.11	5.43 137.92	4.61 117.09	2.32 58.93	0.65 16.51	0.67 17	11.81 299.97	3.13 79.50	2.65 67.31	0.50 12.70	3.46 87.88	21 9.55

Ordering Information





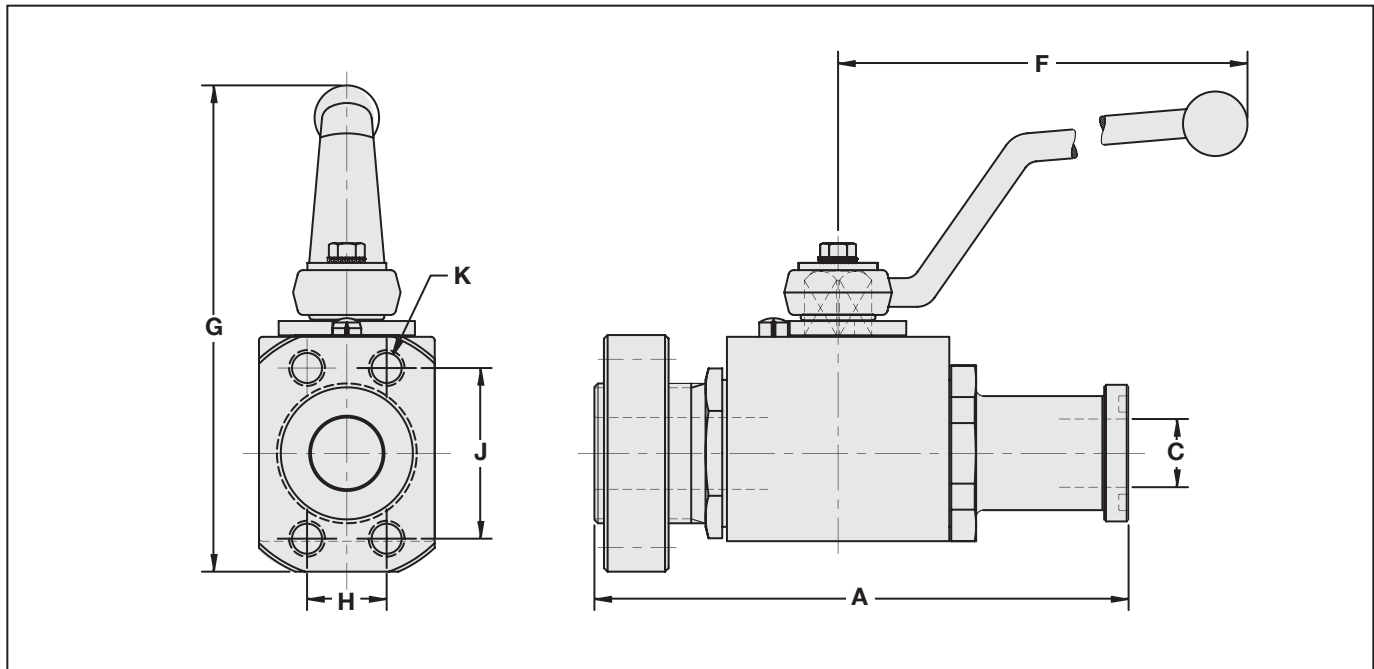
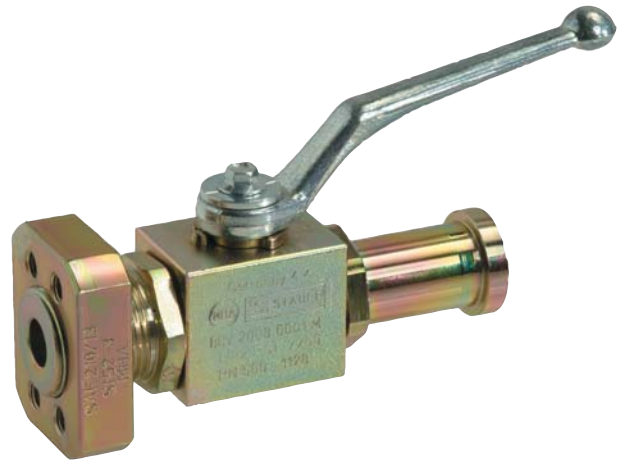
SAE Split Flange / Mating Flange Combination

Specifications

- Combination SAE 4 Bolt and SAE Split Flange
- 1/2", 3/4" and 1" Block Body Style
- SAE Code 61 and 62
- Delrin and MOS2 Ball Seats
- Viton O-Rings
- Carbon Steel Construction Standard;
(other material available to order)
- Temperature Range - 14°F to 212°F
(-10°C to 100°C)
- Zinc Plated Body

Options

- All Standard Options Available. Contact Factory for Details



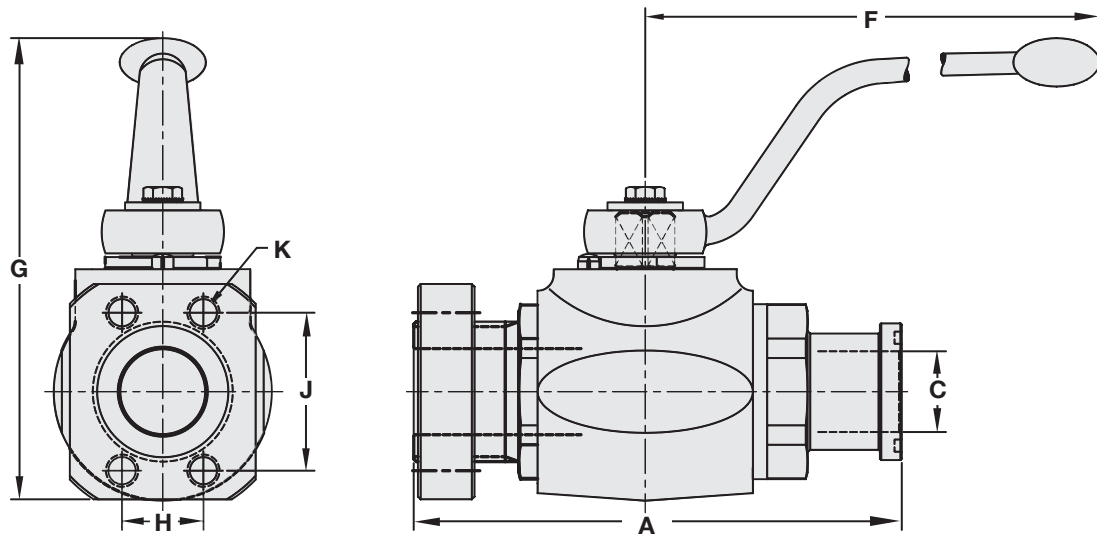
	Size	Part Number	A		C		F		G		H		J		K tap
			mm	in	mm	in	mm	in	mm	in	mm	in	mm	in	
Code 61	1/2"	BBV2H080001M	136	5.35	13	0.51	115	4.53	99	3.90	17.5	0.69	38.1	1.50	UN-2B
	3/4"	BBV2H120001M	149	5.87	19	0.75	170	6.69	136	5.35	22.2	0.87	47.6	1.87	3/8-16
	1"	BBV2H160001M	163	6.42	25	0.98	170	6.69	141	5.55	26.2	1.03	52.4	2.06	3/8-16
Code 62	1/2"	BBV2T080001M	136	5.35	13	0.51	115	4.53	99	3.90	18.2	0.72	40.5	1.59	5/16-18
	3/4"	BBV2T120001M	155	6.10	19	0.75	170	6.69	138	5.43	23.8	0.94	50.8	2.00	3/8-16
	1"	BBV2T160001M	173	6.81	25	0.98	170	6.69	146	5.75	27.8	1.09	57.2	2.25	7/16-14

Specifications

- Combination SAE 4 Bolt and SAE Split Flange
- 1 1/4", 1 1/2" and 2" Forged Body
- SAE Code 61 and 62
- Delrin and MOS2 Ball Seats
- Viton O-Rings
- Carbon Steel Construction Standard
- Temperature Range - -20°F to 212°F (-28°C to 100°C)
- Zinc Plated Body
- Pressure Rating According to SAE Code 61 and 62 Standards

Options

- All Standard Options Available. Contact Factory for Details



	Size	Part Number	A		C		F		G		H		J		K tap
			mm	in	mm	in	mm	in	mm	in	mm	in	mm	in	
Code 61	1 1/4"	FBV2H200001M	181	7.13	30	1.18	306	12.05	171	6.73	30.2	1.19	58.7	2.31	UN-2B
	1 1/2"	FBV2H240001M	204	8.03	38	1.50	306	12.05	186	7.32	35.7	1.41	69.8	2.75	7/16-14
	2"	FBV2H320001M	214	8.43	48	1.89	306	12.05	195	7.68	42.9	1.69	77.8	3.06	1/2-13
Code 62	1 1/4"	FBV2T200001M	198	7.80	30	1.18	306	12.05	178	7.01	31.8	1.25	66.7	2.63	1/2-13
	1 1/2"	FBV2T240001M	229	9.02	38	1.50	306	12.05	190	7.48	36.5	1.44	79.4	3.13	5/8-11
	2"	FBV2T320001M	256	10.08	48	1.89	306	12.05	211	8.31	44.5	1.75	96.8	3.81	3/4-10

Specifications - Dual Pattern Code 61 and Code 62

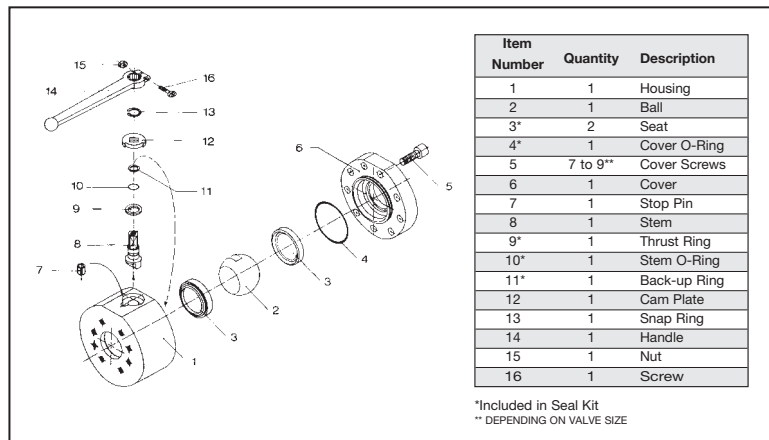
- ½" – 2" Direct Mount
- Delrin +MoS2 Ball Seats
- Viton O-Rings
- Steel Handle
- Direct Mount Eliminates Threads in Fluid Flow
- Machined Body Parts for Reduced Torque Operation.
- Pressure Range: Up to 6000 PSI (400 bar)
- Temperature Range: -30°F to 212°F (-34°C to 100°C)
- Carbon Steel Construction
- Zinc Plated Body



Options

- Flange Kits Available (see page A39)
- Stainless Steel
- Locking Kits
- Limit Switches
- Actuator Packages Available
- Special Seat and "O"-Ring Materials Available for Higher Temperatures or More Aggressive Media

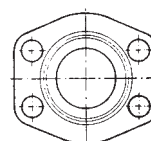
Technical Information



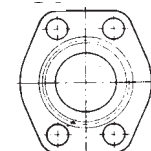
Size		Part Number	Maximum Working Pressure	
			PSI	Bar
1/2"	CODE 61	BBV29080001M	5000 PSI	345
	CODE 62		6000 PSI	420
3/4"	CODE 61	BBV29120001M	5000 PSI	345
	CODE 62		6000 PSI	420
1"	CODE 61	BBV29160001M	5000 PSI	345
	CODE 62		6000 PSI	420
1 1/4"	CODE 61	BBV29200001M	4000 PSI	275
	CODE 62		6000 PSI	420
1 1/2"	CODE 61	BBV29240001M	3000 PSI	210
	CODE 62		6000 PSI	420
2"	CODE 61	BBV29320001M	3000 PSI	210
	CODE 62		6000 PSI	420

FLANGE POSITION

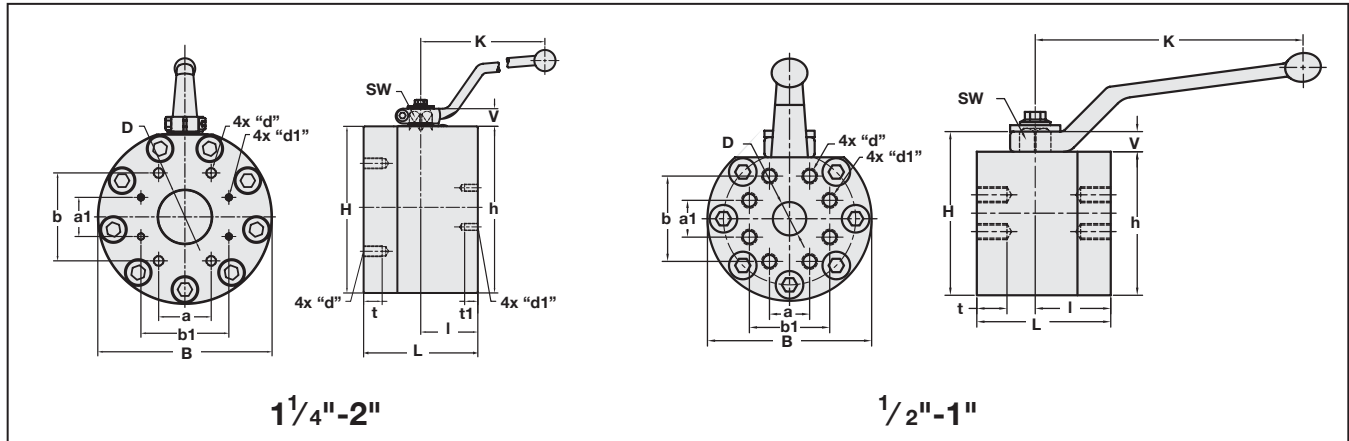
CODE 61



CODE 62



Dimensional Information



Size	D	L	I	B	H	h	V	SW	K	a	b	a1	b1
	in mm	in mm	in mm	in mm	in mm	in mm	in mm	in mm	in mm	in mm	in mm	in mm	in mm
1/2"	0.59 15	2.95 75	1.38 35	3.46 88	3.46 88	1.22 31	0.51 13	.47 12	6.3 160	0.72 18	1.59 40	0.69 18	1.50 38
3/4"	0.79 20	3.15 80	1.38 35	3.86 98	3.94 100	1.44 37	0.55 14	.55 14	6.3 160	0.94 24	2.00 51	0.87 22	1.87 48
1"	0.98 25	3.46 88	1.50 38	4.65 118	4.45 113	1.56 40	0.55 14	.55 14	6.3 160	1.03 26	2.06 52	1.09 28	2.25 57
1 1/4"	1.26 32	3.94 100	1.97 50	5.71 145	6.22 158	2.68 68	0.67 17	.67 17	11.81 300	1.25 32	2.63 67	1.19 30	2.31 59
1 1/2"	1.50 38	4.33 110	2.17 55	6.50 165	7.01 178	3.07 78	0.67 17	.67 17	11.81 300	1.44 37	3.13 80	1.40 36	2.75 70
2"	1.89 48	4.57 116	2.28 58	7.80 198	8.27 210	3.70 94	0.67 17	.67 17	11.81 300	1.75 44	3.81 97	1.69 43	3.06 78

Size	UNC Thread d	UNC Thread d1	t	t1	Weight
			in mm	in mm	lb kg
1/2"	5/16"	5/16"	0.71 18	-	5.50 2.50
3/4"	3/8"	3/8"	0.71 18	-	8.58 3.90
1"	7/16"	3/8"	0.79 20	-	13.20 6.00
1 1/4"	1/2"	7/16"	0.87 22	0.87 22	25.52 11.60
1 1/2"	5/8"	1/2"	0.75 19	0.94 24	35.64 16.20
2"	3/4"	1/2"	0.75 19	1.10 28	54.78 24.90

Ordering Information

BBV	2	9	16	0	0	0	1	M	LD
Product Type Block Body Valve			Connector Size 08 - 1/2" 12 - 3/4" 16 - 1" 20 - 1 1/4" 24 - 1 1/2" 32 - 2"						Locking Kit LD - Locking Device OMIT - No Locking Device
No. of Ports									Manufacturing Code
Connector Style 9 - Dual Pattern SAE Flange									O Ring Material 1 - Viton
Body Material 0 - Carbon Steel Zinc Plated									Ball Seat Material 0 - Delrin
									Ball & Stem Material 0 - Carbon Steel

Specification

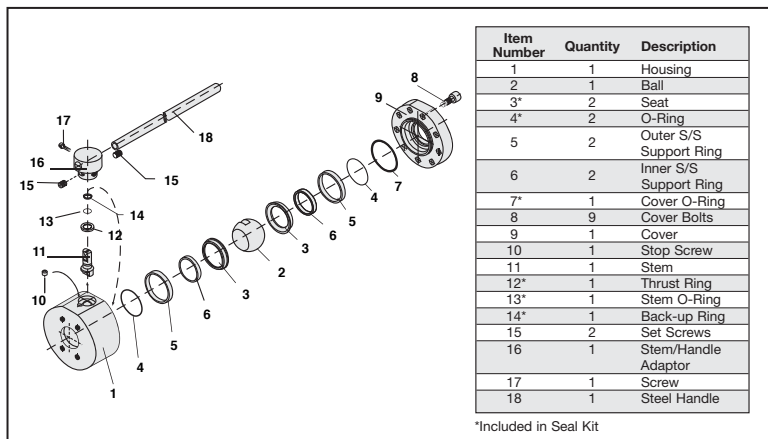
- 2½" – 5" Direct Mount SAE Code 61 Style Flange Connection
- Delrin +MoS₂ Ball Seats
- Viton O-Rings
- Direct Mount Eliminates Threads in Fluid Flow
- Machined Body Parts for Reduced Torque Operation.
- Pressure Range: Up to 2500 PSI** (160 bar)
- Temperature Range: -30°F to 212°F (-34°C to 100°C)
- Carbon Steel Construction
- Removable, Adjustable Steel Handle
- Zinc Plated Body



Options

- Flange Kits Available (see page A39)
- Stainless Steel
- Locking Kits
- Limit Switches
- Actuator Packages Available

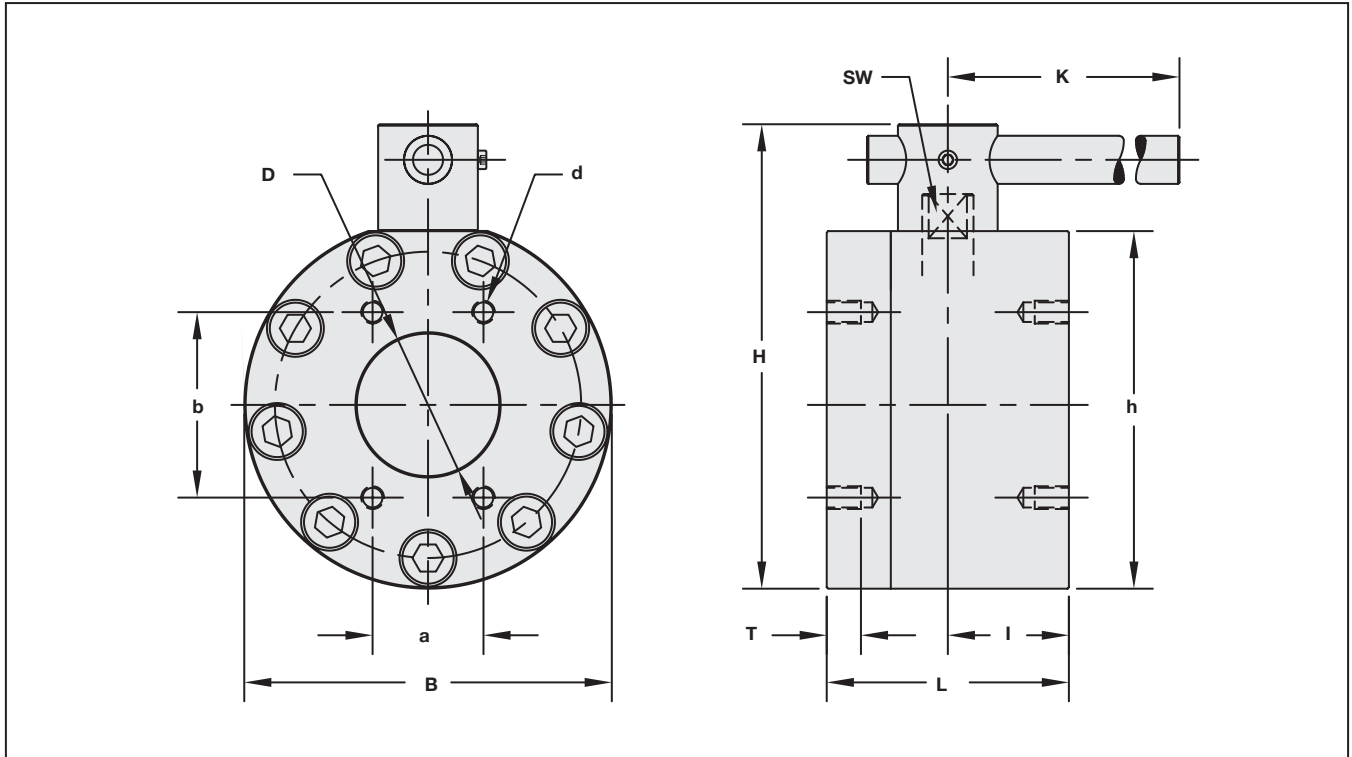
Technical Information



** Working Pressure for these valves is limited to the SAE Flange Ratings, higher pressures can be accommodated with special Flange Connectors. See "BBVF" Series on page V22.

Size		Part Number	Maximum Working Pressure	
			**PSI	Bar
2½"	CODE 61	BBV27400001M	2500 PSI	170
3"	CODE 61	BBV27480001M	2000 PSI	138
4"	CODE 61	BBV27640001M	500 PSI	35
5"	CODE 61	BBV27800001M	500 PSI	35

Dimensional Information



Size	D	L	I	B	H	h	SW	K	a	b	UNC Thread d	T	Weight
	in mm	in mm	in mm	in mm	in mm	in mm	in mm	in mm	in mm	in mm		in mm	lb kg
2½"	2.48 63	5.91 150	2.95 75	7.80 198	10.16 258	3.70 94	0.75 19	23.62 600	2.00 51	3.50 89	½"	0.75 19	67.10 30.50
3"	2.99 76	5.51 140	2.76 70	8.27 210	10.91 277	3.94 100	0.75 19	23.62 600	2.44 62	4.19 106	⅝"	0.94 24	68.20 31.00
4"	3.94 100	6.69 170	3.35 85	10.16 258	12.83 326	4.80 122	0.94 24	35.43 900	3.06 78	5.13 130	⅝"	0.94 24	121.00 55.00
5"	4.65 118	8.27 210	4.13 105	11.61 295	14.84 377	5.51 140	1.42 36	35.43 900	3.63 92	6.00 152	¾"	1.18 30	193.60 88.00

Ordering Information

BBV 2 7 40 0 0 0 1 M - LD													
Product Type Block Body Valve			Connector Size 40 - 2 ½" 48 - 3" 64 - 4" 80 - 5"			Locking Kit LD - Locking Device OMIT - No Locking Device			Manufacturing Code			O Ring Material 1 - Viton	
No. of Ports												Ball Seat Material 0 - Delrin	
Connector Style 7 - CODE 61 SAE Flange Direct Mount												Ball & Stem Material 0 - Carbon Steel	
Body Material 0 - Carbon Steel Zinc Plated													

Specifications

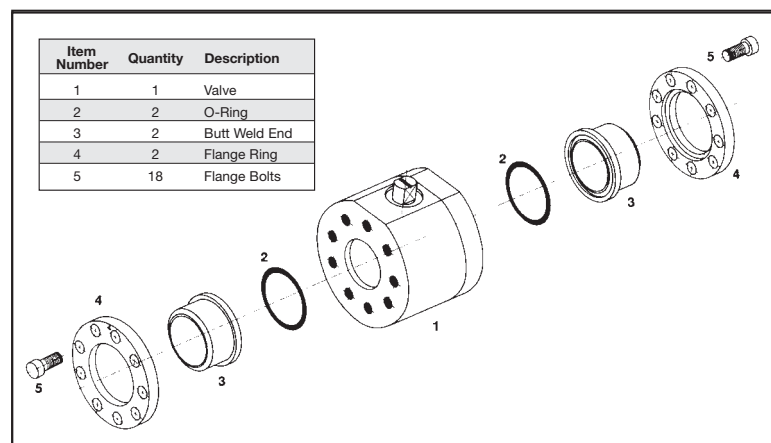
- Direct Mount, High Pressure DIN Flange Design
- 2½" – 5" with Special Flanges for up to 5000 PSI (345 bar)
Working Pressure at a 3:1 Safety Factor
- Temperature Range: -30°F to 212°F
(-34°C to 100°C)
- Carbon Steel Construction
- Removable, Adjustable Steel Handle
- Zinc Plated Body

Options

- Actuator Packages Available
- Limit Switches
- Safety Lock out



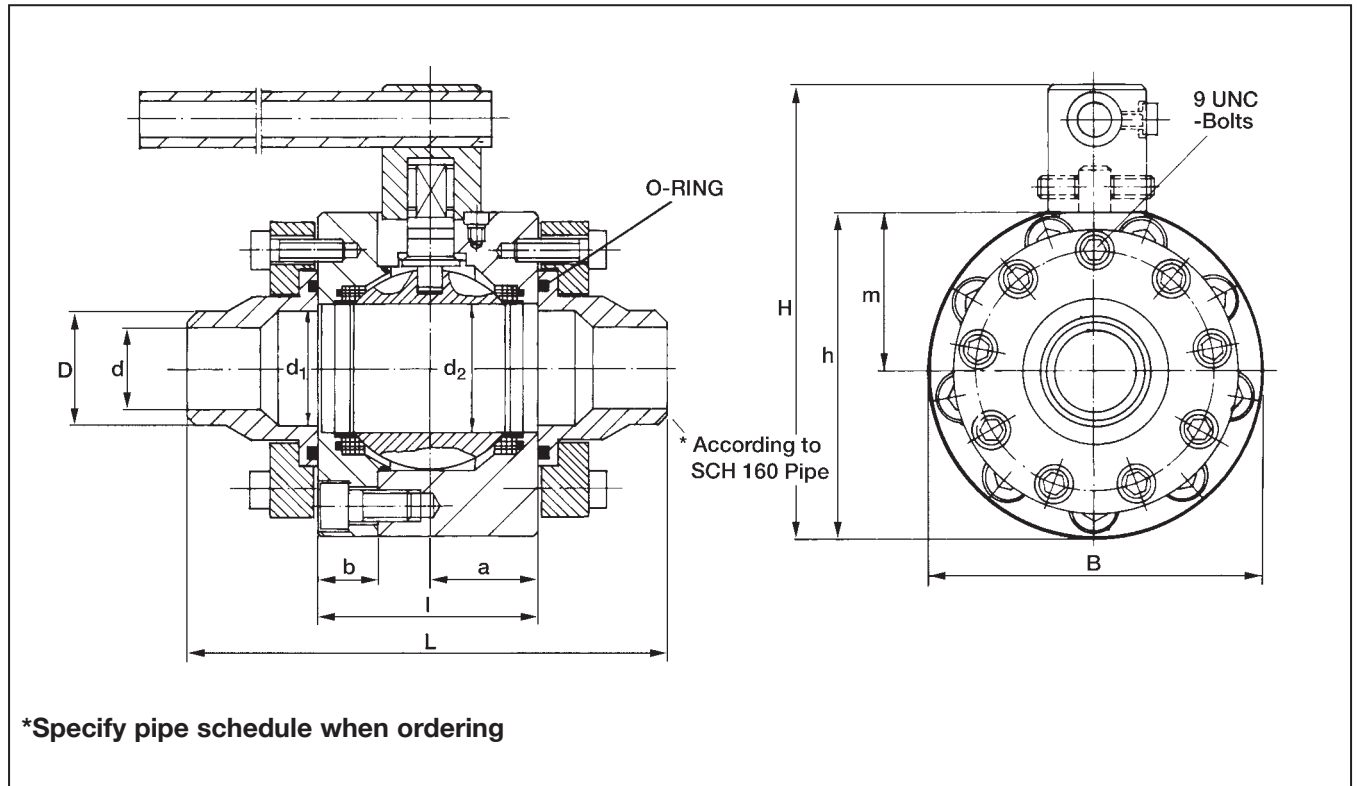
Technical Information



Size	Part Number	Maximum Working Pressure*	
		PSI	Bar
2½"	BBVF27400001M	5000 PSI	345
3"	BBVF27480001M	5000 PSI	345
4"	BBVF27640001M	5000 PSI	345
5"	BBVF27800001M	5000 PSI	345

*Note: With schedule XXS weld ends, consult factory for pressure ratings on schedule 160 weld ends.

Dimensional Information



Size	D	d	d ₁	d ₂	a	b	l	L	H	h	m	B	Screw	WT
	in mm	in mm	in mm	in mm	in mm	in mm	in mm	in mm	in mm	in mm	in mm	in mm		lb kg
2½"	2.87 73	2.13 54	2.37 60	2.48 63	2.95 75	1.69 43	5.91 150	9.84 250	10.16 258	7.60 193	3.70 94	7.80 198	½" x 1½"	84 38.2
3"	3.50 89	2.63 67	3.11 79	2.99 76	2.76 70	1.38 35	5.51 140	10.24 260	10.91 277	8.07 205	3.93 100	8.27 210	⅝" x 1¾" (2")	94 42.7
4"	4.50 114	3.44 87	3.86 98	3.93 100	3.35 85	1.77 45	6.69 170	12.99 330	12.83 326	9.88 251	4.80 122	10.16 258	⅝" x 1¾"	155 70.5
5"	5.56 141	4.31 106	4.74 120	4.64 118	4.13 105	1.89 48	8.27 210	14.57 370	14.84 377	11.31 287	5.51 140	11.61 295	¾" x 2¼"	257 116.8

Ordering Information

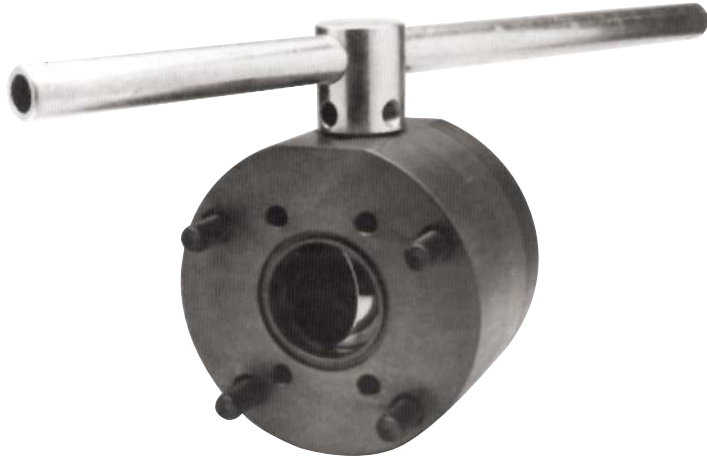
BBVF 2 7 40 0 0 0 1 M LD													
Product Type Block Body Valve Complete With Special Flange			Connector Size 40 – 2 ½" 48 – 3" 64 – 4" 80 – 5"			Locking Kit LD – Locking Device OMIT – No Locking Device			Manufacturing Code			O Ring Material 1 – Viton	
No. of Ports												Ball Seat Material 0 – Delrin	
Connector Style 7 – SAE CODE 61 Direct Mount												Ball & Stem Material 0 – Carbon Steel	
Body Material 0 – Carbon Steel Zinc Plated													

Specifications

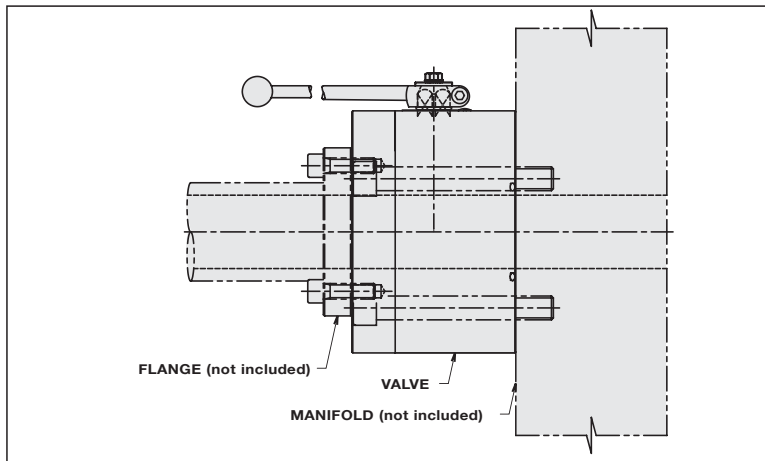
- Direct Mount Manifold Style
- ½" – 2" Standard
- 2½" – 5" Available On Request
- Pressure Range: Up to 6000 PSI (400 bar)
- Temperature Range: -30°F to 212°F
(-34°C to 100°C)
- Valve Connects Directly to Manifold Block and Accepts Code 61 or Code 62 SAE Flange
- Carbon Steel Construction
- Zinc Plated Body

Options

- Actuator Packages Available
- Limit Switches
- Safety Lock out
- Flanges Available

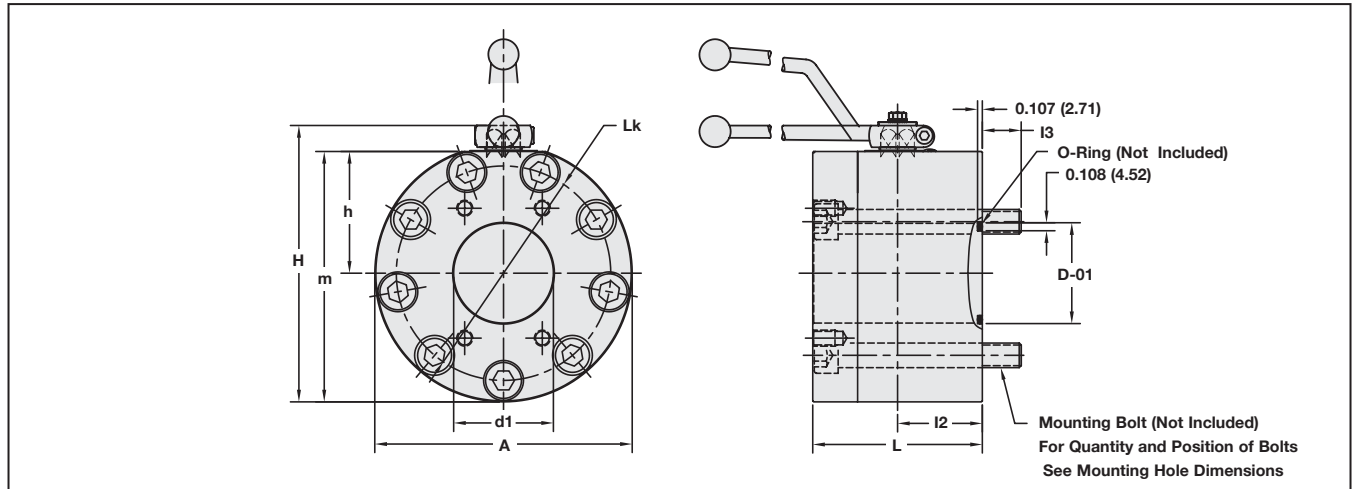


Typical Installation

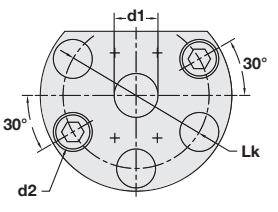
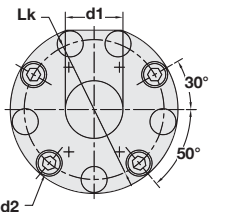


Size	SAE Flange Styles	Part Numb	Maximum Working Pressure	
			PSI	Bar
½"	CODE 61	BBVD27080001M	5000 PSI	345
	CODE 62	BBVD28080001M	6000 PSI	400
¾"	CODE 61	BBVD27120001M	5000 PSI	345
	CODE 62	BBVD28120001M	6000 PSI	400
1"	CODE 61	BBVD27160001M	5000 PSI	345
	CODE 62	BBVD28160001M	6000 PSI	400
1¼"	CODE 61	BBVD27200001M	4000 PSI	275
	CODE 62	BBVD28200001M	6000 PSI	400
1½"	CODE 61	BBVD27240001M	3000 PSI	200
	CODE 62	BBVD28240001M	6000 PSI	400
2"	CODE 61	BBVD27320001M	3000 PSI	200
	CODE 62	BBVD28320001M	6000 PSI	400

Dimensional Information



Mounting Hole Dimensions

Pattern	Size	d ₁	D ₂	Lk	Pattern A	Pattern B
		in mm		in mm		
A	1/2"	0.59 14.99	1/2"	2.28 57.91		
	3/4"	0.79 20.07	1/2"	3.03 76.96		
	1"	0.98 24.89	9/16"	3.54 89.92		
B	1 1/4"	1.26 32.00	1/2"	4.57 116.08		
	1 1/2"	1.50 38.10	5/8"	5.31 134.87		
	2"	1.89 48.01	3/4"	6.50 165.10		

Size	L	I ₂	h	m	H	A	Lk	D ₀₁	I ₃	Screws	Wt
	in mm	in mm	in mm	in mm	in mm	in mm	in mm	in mm	in mm		lb kg
1/2"	2.95 75	1.38 35	1.22 31	2.76 70	3.27 83	3.07 78	2.28 58	1.26 32	0.59 15	1/2" x 3"	5.50 2.5
3/4"	3.75 95	1.38 35	1.44 37	3.37 86	3.94 100	3.86 98	3.03 77	1.26 32	0.59 15	1/2" x 3 1/4"	8.60 3.9
1"	3.46 88	1.50 38	1.56 40	3.88 99	4.45 113	4.65 118	3.54 90	1.52 39	0.59 15	9/16" x 3 1/2"	13.20 6.0
1 1/4"	3.94 100	1.97 50	2.68 68	5.53 140	6.22 158	5.71 145	4.57 116	1.76 45	1.18 30	1/2" x 4 1/2"	25.50 11.6
1 1/2"	4.33 110	2.17 55	3.07 78	6.32 161	7.01 178	6.50 165	5.31 135	2.13 54	1.18 30	5/8" x 4 3/4"	36.00 16.4
2"	4.57 116	2.28 58	3.70 94	7.60 193	8.27 210	7.80 198	6.50 165	2.51 64	1.18 30	3/4" x 5"	55.00 25.0

Ordering Information

BBVD	2	7	16	0	0	0	1	M	-	LD
Product Type Block Body SAE Flange Direct Mount										
No. of Ports										
Connector Style 7 - CODE 61 SAE Flange 8 - CODE 62 SAE Flange										
Body Material 0 - Carbon Steel Zinc Plated										
			Connector Size 08 - 1/2" 12 - 3/4" 16 - 1" 20 - 1 1/4" 24 - 1 1/2" 32 - 2"							
										Locking Kit LD - Locking Device OMIT - No Locking Device
										Manufacturing Code
										O Ring Material 1 - Viton
										Ball Seat Material 0 - Delrin
										Ball & Stem Material 0 - Carbon Steel

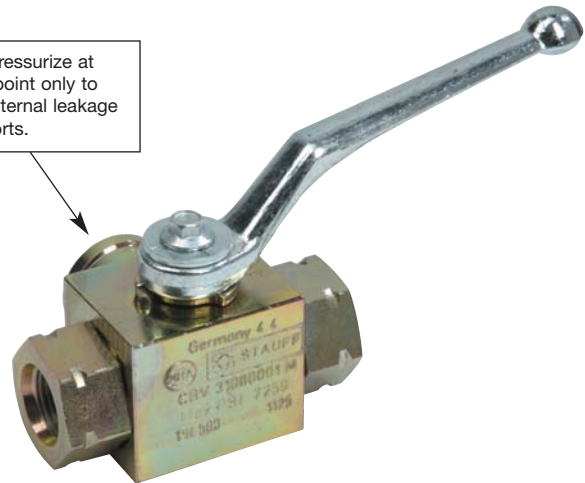
Specifications

- Compact Diverter Style
- 1/8"– 2" NPT and SAE Connections
- Delrin +MoS₂ Ball Seats
- Viton "O"-Rings
- Pressure Range: Up to 7250 PSI (500 bar)
- Carbon Steel Construction
- Zinc Plated Body
- Temperature Range: –30°F to 212°F
(–34°C to 100°C)

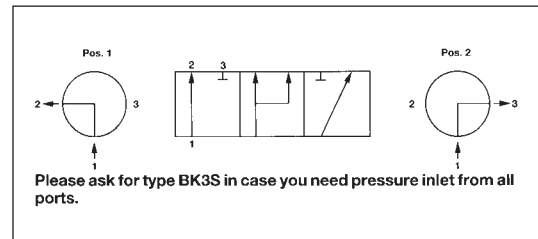
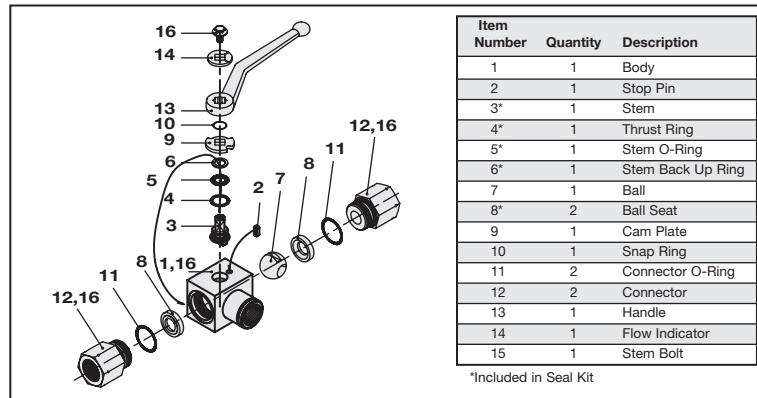
Options

- Locking Device
- Stainless Steel
- Limit Switches
- Actuator Packages Available
- Special Seat and "O"-Ring Available for Higher Temperatures or More Aggressive Media

Note: Pressurize at center point only to avoid internal leakage at all ports.



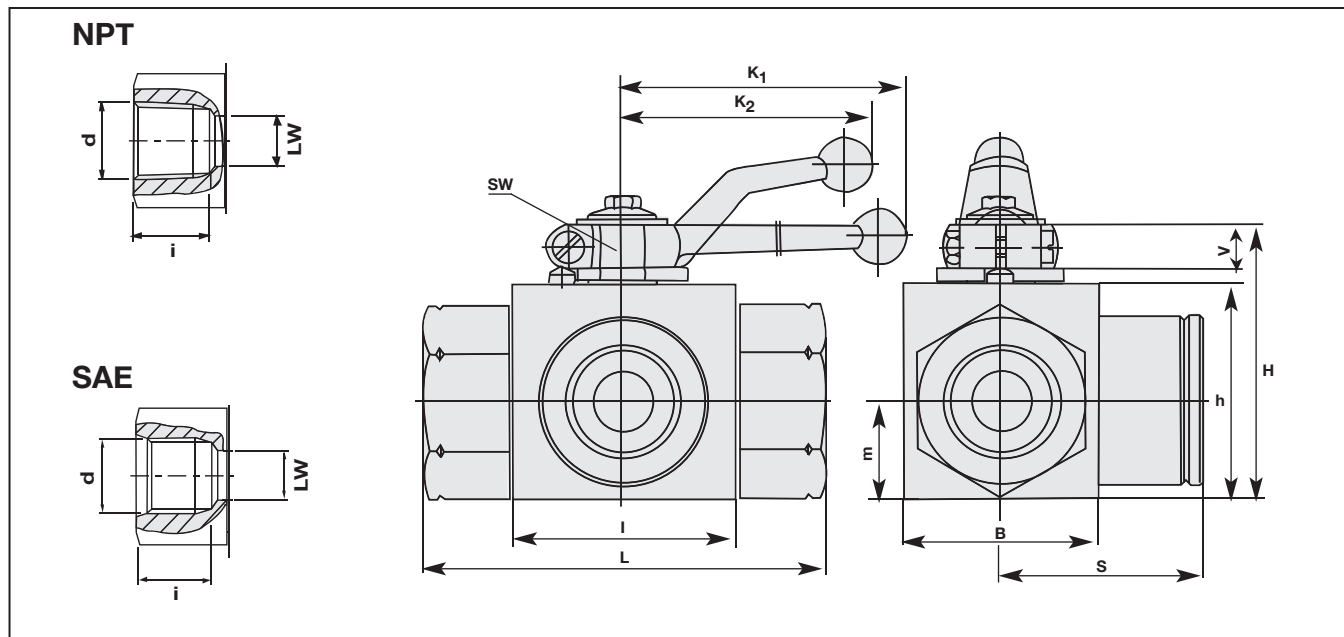
Technical Information



Size		Part Number	Maximum Working Pressure	
			PSI	Bar
1/8"	NPT SAE	CBV30020001M **	7250 PSI	500
1/4"	NPT SAE	CBV30040001M **	7250 PSI	500
3/8"	NPT SAE	CBV30060001M **	7250 PSI	500
1/2"	NPT SAE	CBV30080001M CBV31080001M	7250 PSI 7250 PSI	500 500
3/4"	NPT SAE	CBV30120001M CBV31120001M	5000 PSI 5000 PSI	345 345
1"	NPT SAE	CBV30160001M CBV31160001M	5000 PSI 5000 PSI	345 345
1 1/4"	NPT SAE	CBV30200001M **	5000 PSI	345
1 1/2"	NPT SAE	CBV30240001M **	5000 PSI	345
2"	NPT SAE	CBV30320001M **	5000 PSI	345

** Contact Factory for Availability

Dimensional Information



Size	d NPT	d SAE	i NPT	i SAE	L NPT	L SAE	LW NPT	LW SAE	I	B	H	h	m	V	S	SW	K1	K2	Wt
			mm in	mm in	mm in	mm in	mm in	mm in	mm in	mm in	mm in	mm in	mm in	mm in	mm in	mm in	mm in	mm in	kg lb
1/8"	1/8-27	-	13 0.51	14 0.55	69 2.72	69 2.72	6 0.24	5 0.20	40 1.57	29 1.14	47 1.85	33 1.30	13 0.53	11 0.43	35 1.36	9 0.35	150 5.91	115 4.53	0.66 0.3
1/4"	1/4-18	7/16-20	17 0.67	18 0.71	69 2.72	69 2.72	6 0.24	5 0.20	40 1.57	29 1.14	47 1.85	33 1.30	13 0.53	11 0.43	35 1.36	9 0.35	150 5.91	115 4.53	0.66 0.3
3/8"	3/8-18	9/16-18	18 0.69	19 0.75	78 3.07	72 2.83	10 0.39	10 0.39	43 1.69	35 1.38	52 2.05	38 1.50	18 0.69	11 0.43	36 1.42	9 0.35	150 5.91	115 4.53	0.99 0.5
1/2"	1/2-14	3/4-16	25 0.98	26 1.02	104 4.09	83 3.27	13 0.51	13 0.51	48 1.89	38 1.50	54 2.13	40 1.57	19 0.75	11 0.43	41 1.63	9 0.35	150 5.91	115 4.53	1.21 0.6
3/4"	3/4-14	1 1/16-12	23 0.91	24 0.94	102 4.02	95 3.74	20 0.79	20 0.79	62 2.44	52 2.05	75 2.95	57 2.24	24 0.96	14 0.55	48 1.87	14 0.55	200 7.87	160 6.30	3.30 1.5
1"	1-11 1/2	1 5/16-12	28 1.09	29 1.14	119 4.69	113 4.45	25 0.98	25 0.98	66 2.60	61 2.40	83 3.27	65 2.56	29 1.16	14 0.55	56 2.22	14 0.55	200 7.87	160 6.30	4.84 2.2
1 1/4"	1 1/4-11 1/2	1 7/8-12	28.19 1.11	29 1.14	120 4.72	110 4.33	32 1.26	32 1.26	81 3.19	80 3.15	101 3.98	8 3.15	35 1.36	17 0.65	60 2.36	17 0.67	300 11.81	300 11.81	10.00 4.5
1 1/2"	1 1/2-11 1/2	1 7/8-12	28 1.10	29 1.14	130 5.12	130 5.12	38 1.50	38 1.50	104 4.08	100 3.94	121 4.76	100 3.94	47 1.85	17 0.65	70 2.76	17 0.67	300 11.81	300 11.81	18.00 8.2
2"	2 1/2-11 1/2	2 1/2-12	30 1.19	31 1.22	140 5.51	140 5.51	48 1.89	48 1.89	118 4.65	116 4.57	131 5.16	110 4.33	52 2.05	17 0.65	75 2.95	17 0.67	300 11.81	300 11.81	22.00 10.0

Ordering Information

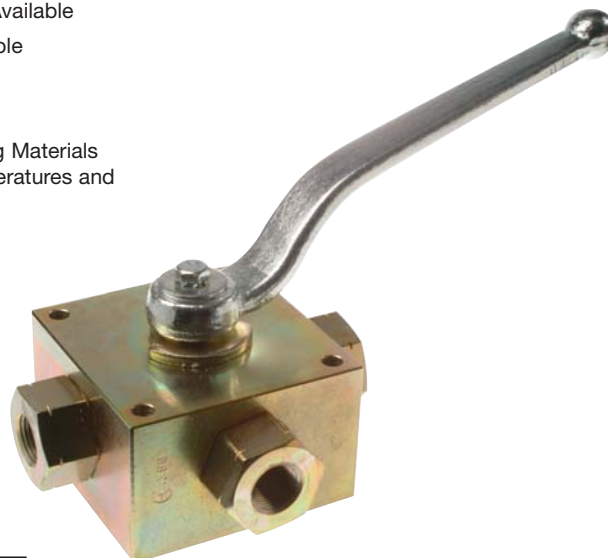
CBV		3	0	12	0	0	0	1	M	- LD
Product Type CBV – Compact Body 3 Way Diverter Valve		Connector Size 02 – 1/8" 04 – 1/4" 06 – 3/8" 08 – 1/2" 12 – 3/4" 16 – 1" 20 – 1 1/4" 24 – 1 1/2" 32 – 2"			Locking Kit LD – Locking Device OMIT – No Locking Device			Manufacturing Code		
No. of Ports								O Ring Material 1 – Viton		
Connector Style 0 – NPT 1 – SAE								Ball Seat Material 0 – Delrin		
Body Material 0 – Carbon Steel Zinc Plated 1 – 316 Stainless Steel								Ball & Stem Material 0 – Carbon Steel 1 – 316 Stainless Steel		

Specifications

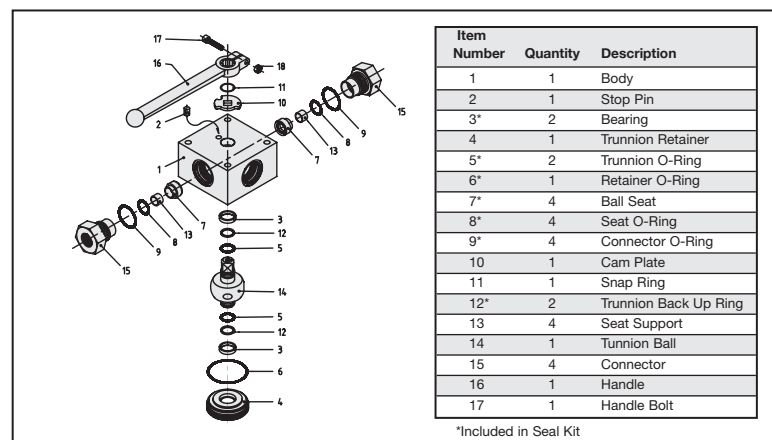
- Multi-Way Style
- 1/8" – 1" Full Bore
- 1 1/4" – 1 1/2" Reduced Bore
- NPT Connections
- Trunnion Style Ball Hard Chromium Plated
- Pressure Range: Up to 7250 PSI (500 bar)
- Zinc Plated Body
- Pressure Loaded Seats at All Ports
- Temperature Range: -20°F to 212°F (-28°C to 100°C)

Options

- SAE Ports Available On Request
- Special Porting Patterns Available
- Actuator Packages Available
- Locking Devices
- Limit Switches
- Special Seat and "O"-Ring Materials Available for Higher Temperatures and More Aggressive Media

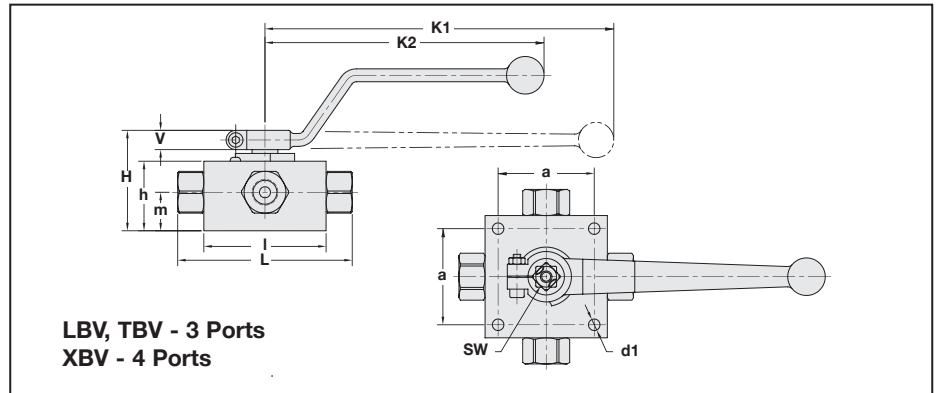
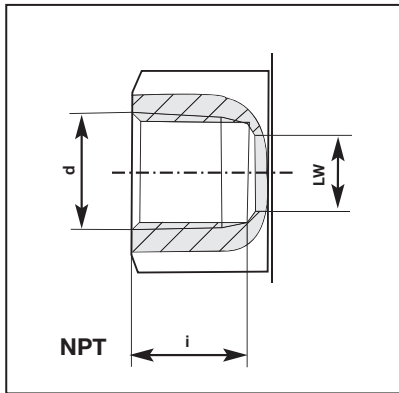


Technical Information



Size		Part Number	Maximum Working Pressure	
			PSI	Bar
1/4"	NPT	LBV30040001M	7250 PSI	500
		TBV30040001M		
		XBV40040001M		
3/8"	NPT	LBV30060001M	7250 PSI	500
		TBV30060001M		
		XBV40060001M		
1/2"	NPT	LBV30080001M	5800 PSI	400
		TBV30080001M		
		XBV40080001M		
3/4"	NPT	LBV30120001M	4500 PSI	310
		TBV30120001M		
		XBV40120001M		
1"	NPT	LBV30160001M	4500 PSI	310
		TBV30160001M		
		XBV40160001M		
1 1/4"	NPT	LBV30200001M	4500 PSI	310
		TBV30200001M		
		XBV40200001M		
1 1/2"	NPT	LBV30240001M	3600 PSI	250
		TBV30240001M		
		XBV40240001M		

Dimensional Information



Size	d NPT	LW	L	I	a	H	h	m	K ₁	K ₂	V	SW	i	d ₁	Weight
		in mm	in mm	in mm	in mm	in mm	in mm	in mm	in mm	in mm	in mm	in mm	in mm	in mm	lb kg
1/4"	1/8-18	0.24 6	3.94 100	2.76 70	2.17 55	2.28 58	1.57 40	0.87 22		6.30 160	0.51 13	0.47 12	0.67 17	0.26 7	3.60 2
3/8"	3/8-18	0.31 8	4.53 115	3.15 80	2.56 65	2.68 68	1.97 50	1.06 27	7.87 200	6.30 160	0.55 14	0.55 14	0.69 18	0.26 7	5.10 2
1/2"	1/2-14	0.51 13	6.30 160	3.94 100	3.15 80	3.07 78	2.36 60	1.22 31	7.87 200	6.30 160	0.55 14	0.55 14	0.98 25	0.35 9	11.50 5
3/4"	3/4-14	0.71 18	6.46 154	4.45 113	3.35 85	3.46 88	2.64 67	1.44 37		11.81 300	0.65 17	0.67 17		0.33 8	15.15 7
1"	1-11 1/2	0.91 23	7.32 186	4.68 119	3.35 85	4.06 103	3.23 82	1.87 48		11.81 300	0.65 17	0.67 17	1.11 28	0.33 8	19.10 9
1 1/4"	1 1/4-11 1/2	0.91 23	7.32 186	4.68 119	3.35 85	4.06 103	3.23 82	1.87 48		11.81 300	0.65 17	0.67 17	1.09 28	0.33 8	19.70 9
1 1/2"	1 1/2-11 1/2	0.91 23	7.32 186	4.68 119	3.35 85	4.06 103	3.23 82	1.87 48		11.81 300	0.65 17	0.67 17	1.10 28	0.33 8	19.90 9

Standard Porting Patterns for Multi-Position Valves

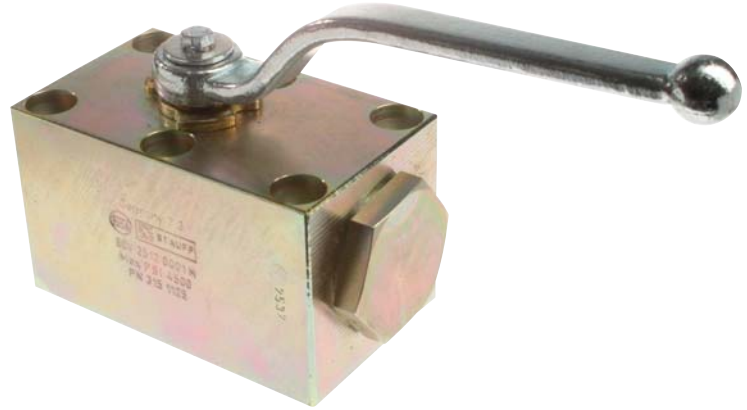
REF NO.	VALVE STYLE	CYCLING	PORTING SYMBOLS	HYDRAULIC SCHEMATIC SYMBOLS	CROSS-OVER POSITION SYMBOLS	DESCRIPTIONS
1	3/2 - Position Valve with L bore LBV...	90°				Trunnion ball, all ports closed in cross-over position, full bore.
2	3/2 - Position Valve with T bore TBV...	90°				Trunnion ball, all ports closed in cross-over position, full bore.
3	3/3 - Position Valve with T bore and detent	2 x 90°				Trunnion ball, all ports closed in cross-over position, full bore; detent at center position is recommended.
4	4/2 - Position Valve with double L bore XB...	90°				Trunnion ball, temporary connection of all ports in cross-over position but with full shut-off at center point; reduced bore; detent at center position is recommended.

Ordering Information

Product Type LBV - 3/2 L Ported Valve TBV - 3/2 T Ported Valve XBV - 4/2 X Ported Valve	Connector Size 04 - 1/4" 06 - 3/8" 08 - 1/2" 12 - 3/4" 16 - 1" 20 - 1 1/4" 24 - 1 1/2"	Locking Kit LD - Locking Device OMIT - No Locking Device
No. of Ports 3 - LBV, TBV 4 - XBV	O Ring Material 1 - Viton	Manufacturing Code
Connector Style 0 - NPT 1 - SAE	Ball Seat Material 0 - Delrin	Trunnion Material 0 - Chrome Plated Steel 1 - 316 Stainless Steel
Body Material 0 - Carbon Steel Zinc Plated 1 - 316 Stainless Steel		

Specifications

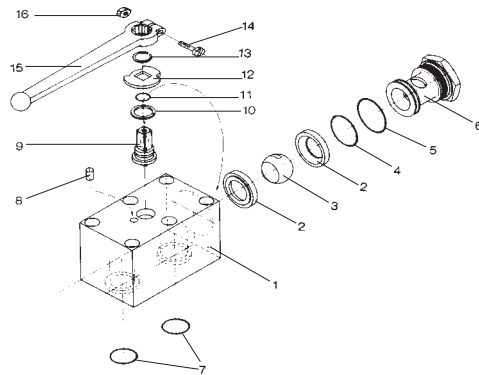
- ¼" – 2" Manifold Block Style
- Improved manifold design eliminates external piping and connectors.
- Delrin +MoS2 Ball Seat
- Viton O-Rings
- Pressure Range: Up to 7250 PSI (500 bar)
- Carbon Steel Construction
- Temperature Range: -20°F to 212°F (-29°C to 100°C)
- Six Mounting Holes, for added safety (¼" and ⅜" versions have 4 mounting holes)
- Mounting Bolts not supplied
- Zinc Plated Body



Options

- Locking Device
- Actuator Packages Available
- Limit Switches
- Stainless Steel
- Three-way valves

Technical Information

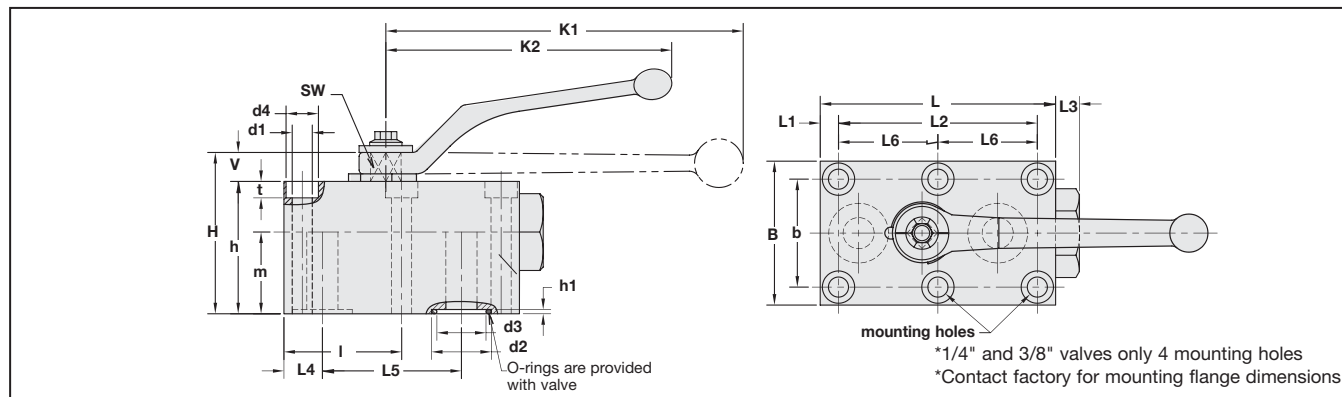


Item Number	Quantity	Description
1	1	Body
2*	1	Seats
3	2	Ball
4*	2	O-Ring
5*	2	O-Ring
6	2	Retainer Plug
7*	2	O-Ring
8	1	Stop Pin
9	1	Stem
10*	1	Thrust Ring
11	1	O-Ring
12	1	Cam Plate
13	1	Snap Ring
14	1	Clamping Screw
15	1	Handle
16	1	Clamping Nut

*Included in Seal Kit

Size	Part Number	Maximum Working Pressure	
		PSI	Bar
¼"	BBV25040001M	7250 PSI	500
⅜"	BBV25060001M	7250 PSI	500
½"	BBV25080001M	5800 PSI	400
¾"	BBV25120001M	4500 PSI	310
1"	BBV25160001M	4500 PSI	310
1¼"	BBV25200001M	4500 PSI	310
1½"	BBV25240001M	4500 PSI	310
2"	BBV25320001M	4500 PSI	310

Dimensional Information



Size	L	L ₁	L ₂	L ₃	L ₄	L ₅	L ₆	I	d ₁	d ₂	d ₃	d ₄
	in mm	in mm	in mm	in mm	in mm	in mm	in mm	in mm	in mm	in mm	in mm	in mm
1/4"	2.24 57	0.33 8	1.38 35	0.24 6	0.33 8	1.38 35		1.02 26	0.26 7	0.46 12	0.24 6	0.41 10
3/8"	2.76 70	0.30 8	2.17 55	0.39 10	0.39 10	1.73 44		1.14 29	0.33 8	0.59 15	0.37 9	0.53 13
1/2"	3.86 98	0.30 8	3.27 83	0.39 10	0.63 16	2.28 58	1.63 41	1.67 42	0.33 8	0.98 25	0.51 13	0.53 13
3/4"	4.61 117	0.39 10	3.82 97	0.39 10	0.79 20	2.72 69	1.91 49	2.01 51	0.41 10	1.22 31	0.79 20	0.65 17
1"	5.31 135	0.39 10	4.53 115	0.39 10	0.94 24	3.19 81	2.26 57	2.44 62	0.41 10	1.37 35	0.98 25	0.65 17
1 1/4"	6.50 165	0.47 12	5.35 136	0.39 10	1.14 29	3.78 96	2.68 68	2.95 75	0.51 13	1.57 40	1.26 32	0.75 19
1 1/2"	7.11 181	1.12 28	4.41 112	0.65 17	1.12 28	4.41 112	2.20 56	3.33 85	0.67 17	1.88 48	1.50 38	0.98 25
2"	8.90 226	1.50 38	5.35 136	0.60 15	1.50 38	5.35 136	2.68 68	4.17 111	0.83 21	2.35 60	1.89 48	1.22 31

Size	H	h	h ₁	m	V	SW	K ₁	K ₂	B	b	t	Weight
	in mm	in mm	in mm	in mm	in mm	in mm	in mm	in mm	in mm	in mm	in mm	lb kg
1/4"	1.69 43	1.38 35	0.07 2	0.77 20	0.24 6	0.28 7		3.15 80	1.57 40	1.06 27	0.27 7	1.32 0.6
3/8"	2.32 59	1.77 45	0.07 2	0.96 24	0.43 11	0.35 9	5.91 150	4.53 115	2.17 55	1.57 40	0.33 8	2.86 1.3
1/2"	2.72 69	2.17 55	0.07 2	1.34 34	0.43 11	0.35 9	5.91 150	4.53 115	2.36 60	1.77 45	0.28 7	4.84 2.2
3/4"	3.46 88	2.76 70	0.12 3	1.48 38	0.55 14	0.55 14	7.87 200	6.30 160	2.76 70	2.01 51	0.41 10	8.58 3.9
1"	3.86 98	3.15 80	0.09 2	1.75 44	0.55 14	0.55 14	7.87 200	6.30 160	3.15 80	2.36 60	0.41 10	12.43 5.65
1 1/4"	4.76 121	3.94 100	0.08 2	2.15 55	0.65 17	0.67 17		11.81 300	3.94 100	3.07 78	0.47 12	24.42 11.1
1 1/2"	4.76 121	3.94 100	0.09 2	1.85 46	0.65 17	0.67 17		11.81 300	5.12 130	3.74 95	0.67 17	33.66 15.3
2"	5.90 150	5.07 129	0.09 2	2.80 71	0.80 20	0.67 17		11.81 300	5.91 150	4.41 112	0.85 22	48.18 21.9

Ordering Information

BBV	2	5	08	0	0	0	1	M
Product Type Block Body Valve			Valve Size 04 – 1/4" 06 – 3/8" 08 – 1/2" 12 – 3/4" 16 – 1" 20 – 1 1/4" 24 – 1 1/2" 32 – 2"					Manufacturing Code
No. of Ports								O Ring Material 1 – Viton (standard)
Connection Type 5 – Manifold Mount								Ball Seat Material 0 – Delrin (standard)
Body Material 0 – Carbon Steel Zinc Plated 1 – 316 Stainless Steel								Ball & Stem Material 0 – Carbon Steel 1 – Stainless Steel

Add on feature to lock or tag out valves used in pressure line in accordance with OSHA regulations.

Factory installed Locking Kit

Specifications

- Available for STAUFF valves up to 2" size.
Design changes for Direct Mount SAE Valve. Pad Lock not included. Plate is stainless steel, for block body and forged body two-way valves.



Locking Kit Part #	Fits	Valve Size
LD-BBV04-08	BBV/BBVM/CBV	1/8"-1/2" with SW9 Stem
LD-BBV12-24	BBV/BBVM/CBV	3/4"-1" & 1 1/4"-1 1/2" Reduced Bore
LD-FBV20-32	FBV	1 1/4"-2"

Field Installed Locking Kit

Specifications

- New design for easy field installation. No welding or drilling required. This tamper resistant design is available up to 2" size. Made of Zinc plated yellow chromated carbon steel. Pad lock not included.

- Accepts Standard Lock

Order Example

- Match stem dimension "SW" of Valve, with **bold SW** for kit number - add to valve

Kit #
LD **SW9** FI
LD **SW14** FI
LD **SW17** FI

i. e., BBV20160001M/LD **SW14** FI



**ALL VALVES ARE AVAILABLE WITH LOCKING DEVICE
CONTACT FACTORY FOR DETAILS ON VALVES NOT LISTED.**

Seal Kit Ordering Guide for Two-Way Ball Valves Ending in ...01M (Derlin/Viton seat/seal combination)

Threaded & Split Flange End Ball Valves	Ball Valve Series	Seal Kit Part Number
1/4" NPT or SAE	BBV + BBVM + CBV	BBVS/K047101M
3/8" NPT or SAE	BBV + BBVM + CBV	BBVS/K067101M
1/2" NPT, SAE or SAE code 61 & 62 Split Flange	BBV + BBVM + CBV	BBVS/K087101M
3/4" NPT, SAE or SAE code 61 & 62 Split Flange	BBV + BBVM + CBV	BBVS/K124501M
1" & (1.1/4", 1.1/4" reduced bore) NPT, SAE or SAE only	BBV + BBVM + CBV	BBVS/K164501M
1 1/4" NPT, SAE or SAE code 61 & 62 Split Flange	FBV + CBV	BBVS/K204501M
1 1/2" NPT, SAE or SAE code 61 & 62 Split Flange	FBV + CBV	FBVS/K244501M
2" NPT, SAE or SAE code 61 & 62 Split Flange	FBV + CBV	FBVS/K324501M

Direct Mount SAE Flange Ball Valves	Ball Valve Series	Seal Kit Part Number
1/2"	BBV, BBVD	BBVS/K082801M
3/4"	BBV, BBVD	BBVS/K122801M
1"	BBV, BBVD	BBVS/K162801M
1 1/4"	BBV, BBVD	BBVS/K202801M
1 1/2"	BBV, BBVD	BBVS/K242801M
2"	BBV, BBVD	BBVS/K322801M
2 1/2"	BBV, BBVD & BBVF	BBVS/K402701M
3"	BBV, BBVD & BBVF	BBVS/K482701M
4"	BBV, BBVD & BBVF	BBVS/K642701M
5"	BBV, BBVD & BBVF	BBVS/K802701M

All seal kits include all non-ferrous component parts

Pneumatic Actuator Packages

Most Stauff valves can be factory mounted to compact, efficient pneumatic actuators. The actuators feature simple, robust construction and are suitable for applications with high cycle requirements. The double piston design significantly reduces the overall size of the valve/actuator package.

Solenoid valves and limit switches are available.

Note: Actuators are designed for 90 degree open/close applications only, they should not be used for valve throttling.

Electric Valve Actuator Packages can also be offered for different valve styles and sizes.

Contact Stauff with requirements.



Limit Switches

Most Stauff valves can be ordered with one or two limit switches to indicate whether the valve is in the open or closed position.

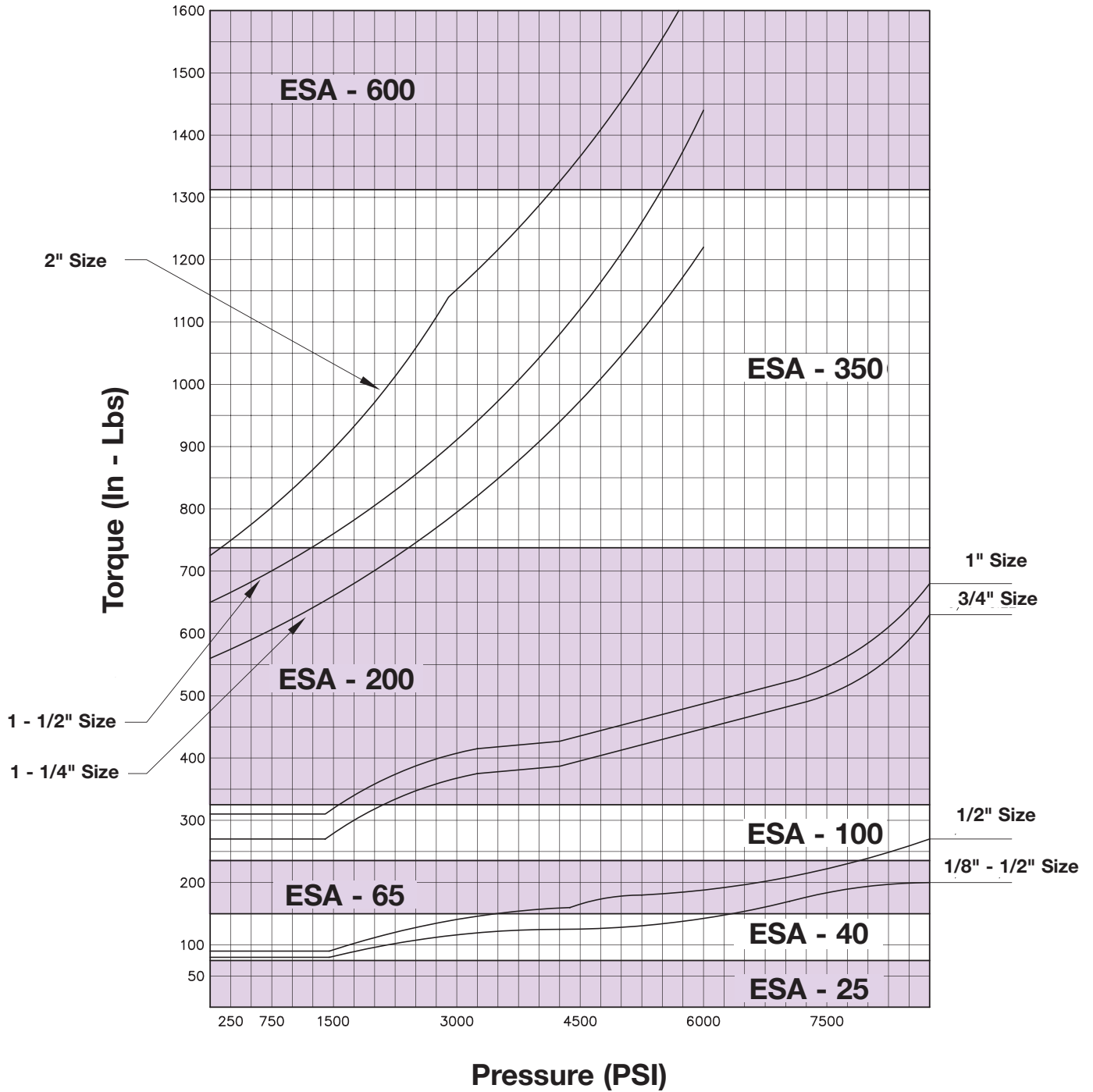
Contact Stauff with requirements.



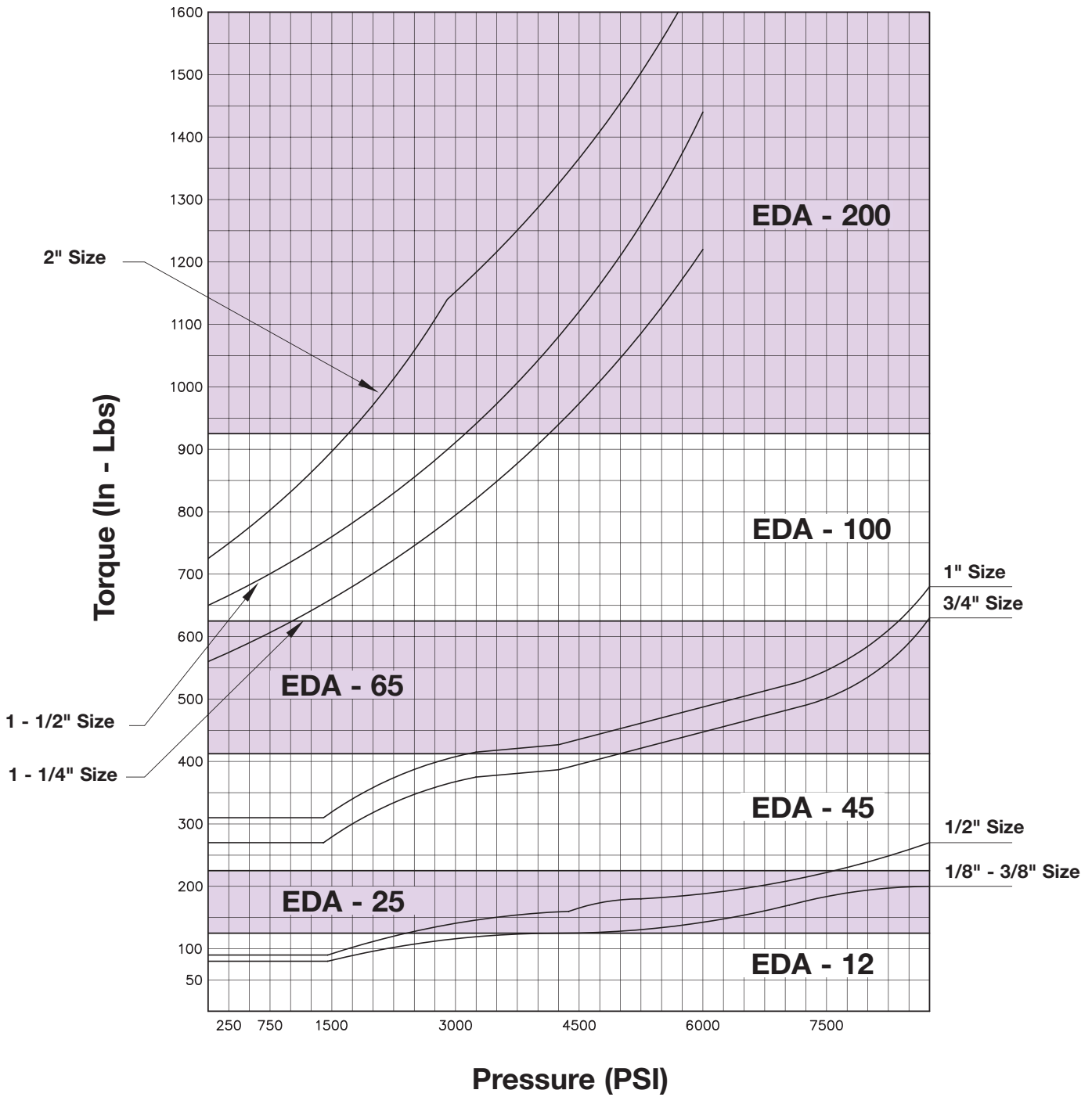


Actuator Selection Chart - Single Acting Pneumatic Actuator

For Two-Way Ball Valves with Normal Hydraulic Fluid:
(minimum air supply pressure is 80 PSI)



For Two-Way Ball Valves with Normal Hydraulic Fluid:
(minimum air supply pressure is 80 PSI)



Specifications

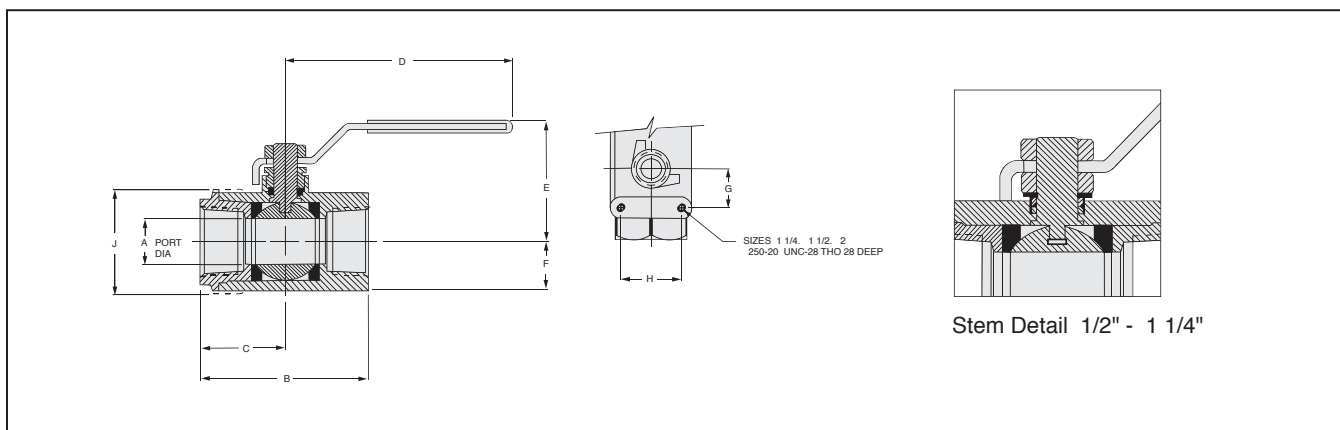
- Hex Body, Medium Pressure
- 2000 PSI (138 bar) Pressure Rating
- NPT Connections
- Zinc Phosphated, Carbon Steel Body
- Chrome Plated Carbon Steel Ball
- Delrin Seats – PTFE Seals



Options

- Lockout Handle

Dimensional Information



Ordering Information

Part Number	Port A	DIA A		B		C		D		E		F		G		H		J		CV	Weight	
		in	mm	in	mm	in	mm	in	mm	in	mm	in	mm	in	mm	in	mm	in	mm		kg	lbs
2BVM 2004S	1/4" NPT	0.40	10	2.00	51	1.00	25	3.78	96	1.63	41	0.53	13	-	-	-	-	-	-	6	0.6	0.27
2BVM 2006S	3/8" NPT	0.40	10	2.00	51	1.00	25	3.78	96	1.63	41	0.53	13	-	-	-	-	-	-	12	0.6	0.27
2BVM 2008S	1/2" NPT	0.54	14	2.37	60	1.12	28	3.78	96	1.73	44	0.63	16	-	-	-	-	-	-	15	0.8	0.36
2BVM 2012S	3/4" NPT	0.68	17	2.90	74	1.40	36	5.10	130	2.08	53	0.81	21	-	-	-	-	-	-	23	1.4	0.63
2BVM 2016S	1" NPT	0.88	22	3.41	87	1.65	42	5.10	130	2.30	58	1.00	25	-	-	-	-	-	-	36	2.4	1.09
2BVM 2020S	1 1/4" NPT	1.00	25	3.94	100	2.00	51	6.10	155	2.76	70	1.13	29	0.94	24	1.50	38	-	-	44	2.7	1.22
2BVM 2024S	1 1/2" NPT	1.25	32	4.65	118	2.37	60	6.10	155	2.98	76	1.34	34	0.94	24	1.50	38	2.75	70	64	6.5	2.04
2BVM 2032S	2" NPT	1.50	38	4.98	127	2.57	65	8.60	218	3.54	90	1.52	39	1.03	26	2.00	51	-	-	114	6.1	2.77

Lock Out Kit

Part No.
2BVM/LD04 (FITS 1/4" - 1/2")
2BVM/LD12 (FITS 3/4" - 1")
2BVM/LD20 (FITS 1 1/4" - 1 1/2")
2BVM/LD32 (FITS 2")

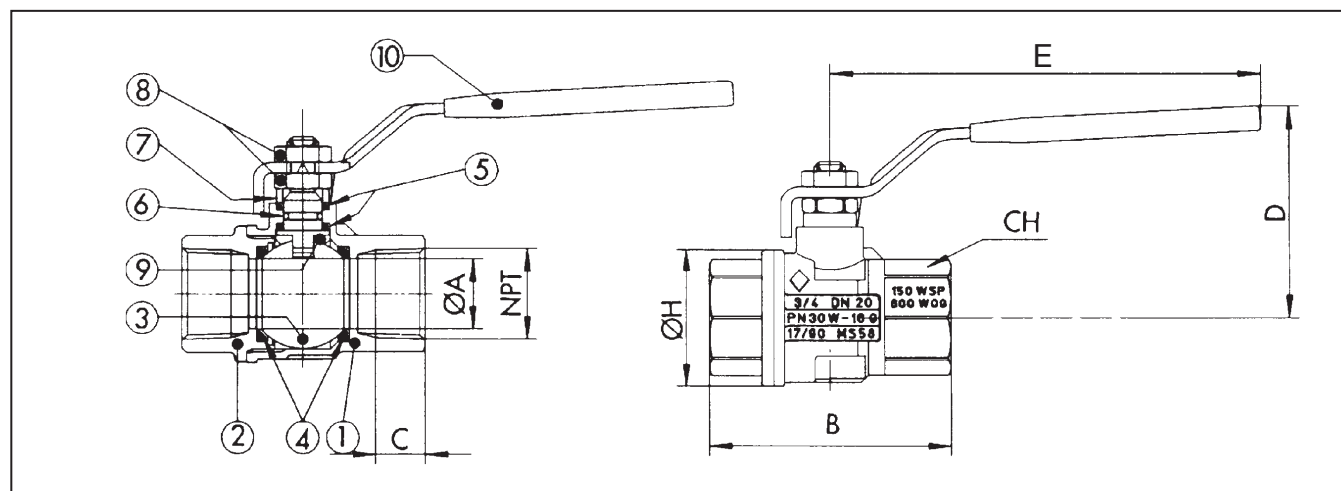
Specifications

- Brass Hot Stamping with Chrome Plated Brass Ball ¼" to 4"
- Pressure Rating to 600 PSI (WOG) (40 bar)
- Blow Out Proof Stem
- Teflon Seats, Seals & Thrust Washer
- Temperature to 320°F (160°C)
- Metal Handle ¼" to 2"
- Aluminum Handle 2½" to 4"
- All Valves are Full Port.



Options

- Limit Switches
- Locking Handles

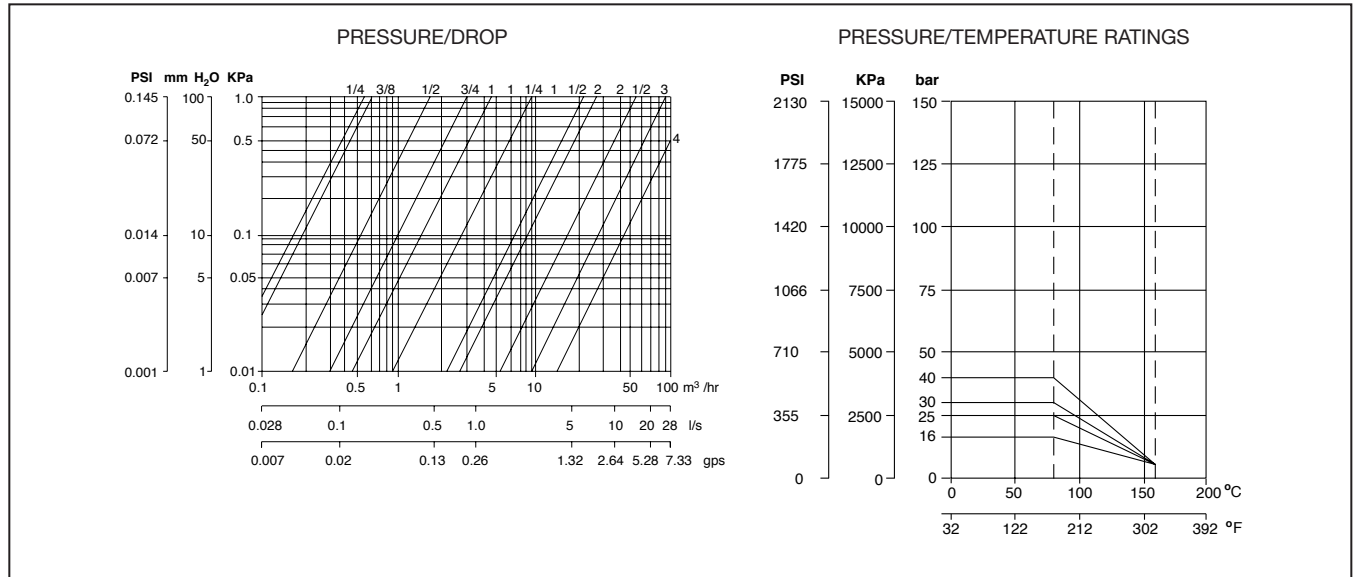


Dimensional Information

N Pos	Part Name	Materials	N Pcs.
1	BODY	BRASS UNI 5707-65	1
2	END CONNECTION	BRASS UNI 5705-65	1
3	BALL	BRASS UNI 5705-65	1
4	SEAT MATERIAL	P.T.F.E.	2
5	STEM SEALS	P.T.F.E.	2
6	O-RING	NBR 75 Sh A	1
7	PACKING GLAND	BRASS UNI 5705-65	1
8	NUT	PLATED STEEL	2
9	STEM	BRASS UNI 5705-65	1
10	LEVER HANDLE	PLATED* STEEL	1

Part No.	Size NPT	ØA	C	B	ØH	CH	E	D	CV Factor	PSI Bar	Lbs Kg
2BVL-20 04 B	¼" in mm	0.39 10	0.39 10	2.02 51.5	0.90 23	0.78 20	3.85 98	1.75 44.5	6.29	600 40	0.30 0.14
2BVL-20 06 B	⅜" in mm	0.39 10	0.40 10	2.02 51.5	0.90 23	0.78 20	3.85 98	1.75 44.5	6.99	600 40	0.28 0.13
2BVL-20 08 B	½" in mm	0.59 15	0.53 13.6	2.44 62	1.25 32	0.98 25	3.85 98	1.88 48	19	600 40	0.41 0.19
2BVL-20 12 B	¾" in mm	0.78 20	0.55 14	2.71 69	1.53 39	1.22 31	4.80 122	2.28 58	34.42	600 40	0.67 0.31
2BVL-20 16 B	1" in mm	0.98 25	0.66 16.8	3.07 78	1.92 49	1.49 38	4.80 122	2.44 62	50.18	600 40	1.09 0.50
2BVL-20 20 B	1¼" in mm	1.25 32	0.68 17.3	3.42 87	2.32 59	1.88 48	6.02 153	3.07 78	103.7	600 40	2.01 0.92
2BVL-20 24 B	1½" in mm	1.57 40	0.68 17.3	3.89 99	2.87 73	2.12 54	6.02 153	3.34 85	268.41	600 40	3.08 1.40
2BVL-20 32 B	2" in mm	1.96 50	0.69 17.7	4.33 110	3.38 86	2.63 67	6.37 162	3.79 96.5	309.2	600 40	4.18 1.90
2BVL-20 40 B	2½" in mm	2.56 65	1.19 30.2	5.59 142	4.37 111	3.54 90	8.07 205	5.02 127.5	629	600 40	8.00 3.66
2BVL-20 48 B	3" in mm	3.15 80	1.31 33.3	6.45 164	5.35 136	4.13 105	8.07 205	5.45 138.5	1018.17	600 40	12.90 5.90
2BVL-20 64 B	4" in mm	3.94 100	1.55 39.3	7.60 193	6.35 166	5.12 130	10.23 260	6.34 161	1622	600 40	22.04 10.0

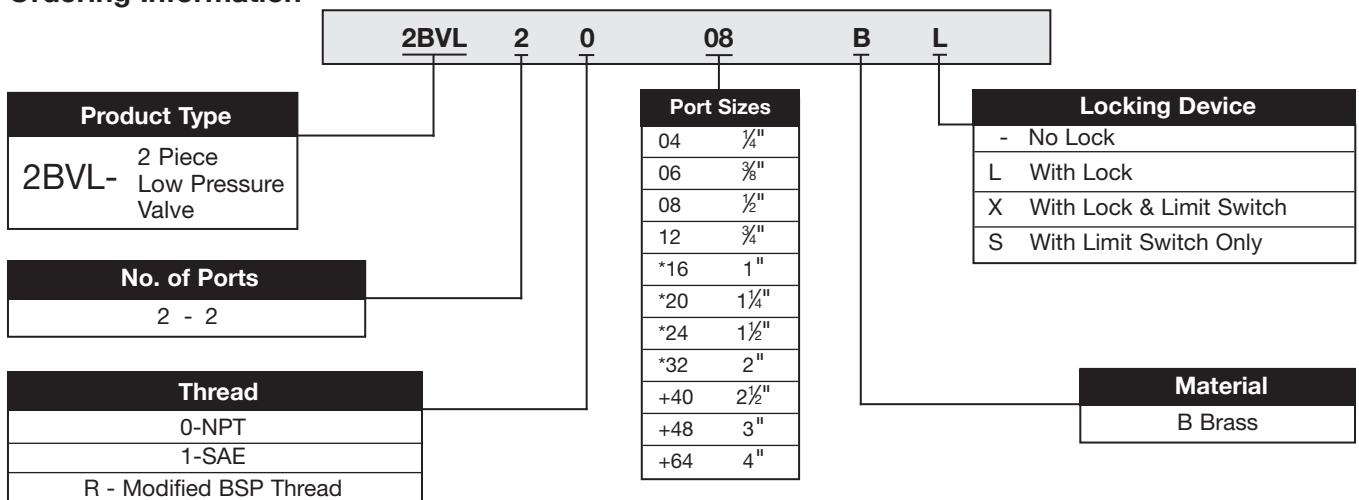
Technical Information



Replacement Handle	*Contact Factory	R1210	R1211	R1212	R1271 2 1/2"-3" R1272 4"
	FITS 1/4", 3/8", 1/2"	FITS 3/4", 1"	FITS 1 1/4", 1 1/2"	FITS 2"	FITS 2 1/2", 3", 4"
Locking Device	BVLK-04	BVLK-12	BVLK-20	BVLK-32	BVLK-40
	FITS 1/4", 3/8", 1/2"	FITS 3/4", 1"	FITS 1 1/4", 1 1/2"	FITS 2"	FITS 2 1/2", 3", 4"

*Order separate from valve

Ordering Information





Low Pressure SAE Port Adaptors

Specifications

- Leak Free O-Ring Sealing to 4" with a Variety of Connection Options:
- Socket Weld
- Hose Barb (Straight 45° & 90°)
- Split Flange
- Carbon Steel Construction
- Lock Nut Design Simplifies the Positioning of Valves and Eliminates Weld Damage to Valve.
- Buna N Seals

Options

- Viton Seals
- Step Sizes Available - Consult Factory



Dimensional Information: 2½" - 4"

	PART NO.	BSP SIZE		B	E	D	PSI BAR	WEIGHT
	2BVL-2R 40 B	2½"	in	5.59	8.07	5.02	600	8.00 lb
			mm	142	205	127.5	40	3.66 kg
	2BVL-2R 48 B	3"	in	6.45	8.07	5.45	600	12.90 lb
			mm	164	205	138.5	40	5.90 kg
	2BVL-2R 64 B	4"	in	7.60	10.23	6.34	600	22.04 lb
			mm	193	260	161	40	10.0 kg

*Note: All "O"-rings should be lubricated before assembly.

SWA - SWIVEL SOCKET WELD ADAPTOR							
Part no.	Port	Thread	A	B	C	D	
SWA - 16LR	1"	1½"-12UN-2B	0.88"	0.25"	1.33"	1.63"	
SWA - 20LR	1½"	1½"-12UN-2B	0.88"	0.25"	1.67"	2.00"	
SWA - 24LR	1½"	1½"-12UN-2B	0.88"	0.25"	1.91"	2.25"	
SWA - 32LR	2"	2½"-12UN-2B	1.00"	0.25"	2.39"	2.75"	
SWA - 40LR	2½"	2½"-11BSP	1.50"	0.50"	2.89"	3.25"	
SWA - 48LR	3"	3"-11BSP	1.50"	0.50"	3.51"	3.75"	
SWA - 64LR	4"	4"-11BSP	1.50"	0.50"	4.51"	4.75"	

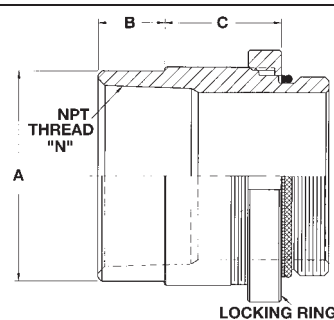
*Note: Remove "O" ring before welding, valve should not be installed before welding adaptor.

HA - SAE TO HOSE BARB ADAPTOR						
Part no.	Port	Thread	A	B	C	
HA-16	1"	1½"-12UN-2B	0.375"	1.37"	0.84"	
HA-20	1½"	1½"-12UN-2B	0.40"	1.90"	1.06"	
HA-24	1½"	1½"-12UN-2B	0.40"	1.94"	1.25"	
HA-32	2"	2½"-12UN-2B	0.41"	2.43"	1.70"	
HA-40	2½"	2½"-11BSP	0.45"	3.09"	2.15"	
HA-48	3"	3"-11BSP	0.45"	3.62"	2.65"	
HA-64	4"	4"-11BSP	0.45"	4.90"	3.65"	

SAS - SAE TO SPLIT FLANGE (CODE 61) ADAPTOR						
Part no.	Port	Thread	A	B	C	
SAS-16	1"	1½"-12UN-2B	2.40"	1.00"	1.75"	
SAS-20	1½"	1½"-12UN-2B	2.72"	1.25"	2.00"	
SAS-24	1½"	1½"-12UN-2B	2.72"	1.50"	2.375"	
SAS-32	2"	2½"-12UN-2B	2.97"	2.00"	2.812"	
SAS-40	2½"	2½"-11BSP	3.18"	2.50"	3.312"	
SAS-48	3"	3"-11BSP	3.18"	3.00"	4.00"	
SAS-64	4"	4"-11BSP	3.44"	4.00"	5.00"	

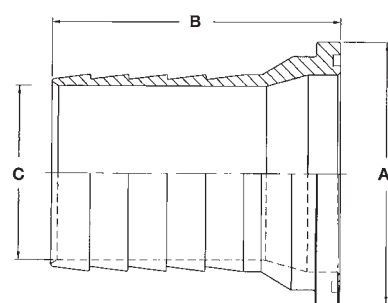
SNN - SAE SWIVEL TO NPT FEMALE ADAPTOR

Part no.	Port	Thread	A	B	C
SNN-16	1"	1½"-12UN-2B	1.63"	0.88"	1.50"
SNN-20	1¼"	1½"-12UN-2B	1.88"	0.88"	1.56"
SNN-24	1½"	1½"-12UN-2B	2.25"	0.88"	1.56"
SNN-32	2"	2½"-12UN-2B	2.75"	0.88"	1.75"
SNN-40	2½"	2½"-11BSP	3.13"	1.00"	1.75"
SNN-48	3"	3"-11BSP	3.88"	1.00"	1.75"
SNN-64	4"	4"-11BSP	4.88"	1.00"	1.75"



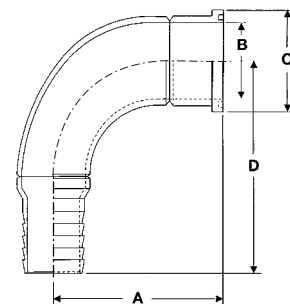
HAS - SPLIT FLANGE TO HOSE BARB ADAPTOR

Part no.	Port	Thread	A	B	C
HAS-16	1"	CODE 61	1.75"	2.63"	0.84"
HAS-20	1¼"	CODE 61	2.00"	3.00"	1.06"
HAS-24	1½"	CODE 61	2.38"	3.00"	1.25"
HAS-32	2"	CODE 61	2.81"	3.25"	1.70"
HAS-40	2½"	CODE 61	3.31"	4.00"	2.15"
HAS-48	3"	CODE 61	4.00"	4.50"	2.65"
HAS-64	4"	CODE 61	5.00"	5.00"	3.65"



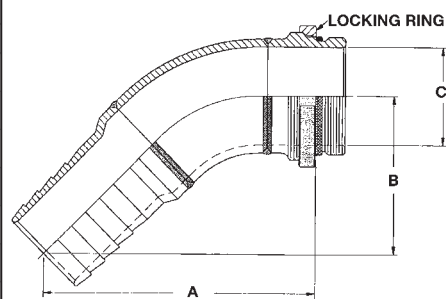
HAS 90° - SPLIT FLANGE TO HOSE BARB ELBOW 90° ADAPTOR

Part no.	Port	A	B	C	D
HAS 90-16	1"	2.75"	1.00"	1.75"	3.63"
HAS 90-20	1¼"	3.25"	1.25"	2.00"	4.63"
HAS 90-24	1½"	3.50"	1.50"	2.38"	5.00"
HAS 90-32	2"	4.25"	2.00"	2.81"	6.25"
HAS 90-40	2½"	5.50"	0.5"	3.31"	7.88"
HAS 90-48	3"	6.38"	3.00"	4.00"	9.00"
HAS 90-64	4"	8.00"	4.00"	5.00"	11.38"



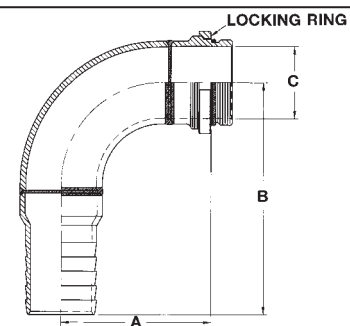
HA 45° - SAE SWIVEL TO HOSE BARB ELBOW 45° ADAPTOR

Part no.	Port	Thread	A	B	C
HA 45-16	1"	1½"-12UN-2B	3.50"	2.00"	1.00"
HA 45-20	1¼"	1½"-12UN-2B	4.25"	2.50"	1.25"
HA 45-24	1½"	1½"-12UN-2B	4.38"	2.50"	1.50"
HA 45-32	2"	2½"-12UN-2B	5.38"	3.13"	2.00"
HA 45-40	2½"	2½"-11BSP	7.00"	4.00"	2.50"
HA 45-48	3"	3"-11BSP	8.00"	4.64"	3.00"
HA 45-64	4"	4"-11BSP	9.50"	5.50"	4.00"



HA 90° - SAE SWIVEL TO HOSE BARB ELBOW 90° ADAPTOR

Part no.	Port	Thread	A	B	C
HA 90-16	1"	1½"-12UN-2B	2.38"	3.63"	1.00"
HA 90-20	1¼"	1½"-12UN-2B	2.75"	4.50"	1.25"
HA 90-24	1½"	1½"-12UN-2B	3.13"	5.00"	1.50"
HA 90-32	2"	2½"-12UN-2B	4.00"	6.25"	2.00"
HA 90-40	2½"	2½"-11BSP	5.25"	8.06"	2.50"
HA 90-48	3"	3"-11BSP	6.00"	9.06"	3.00"
HA 90-64	4"	4"-11BSP	7.75"	11.38"	4.00"

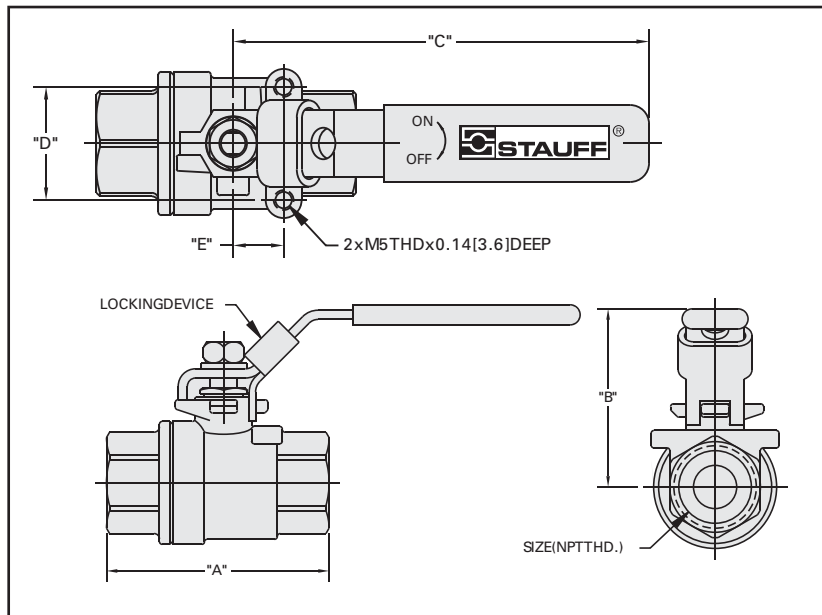


Specifications

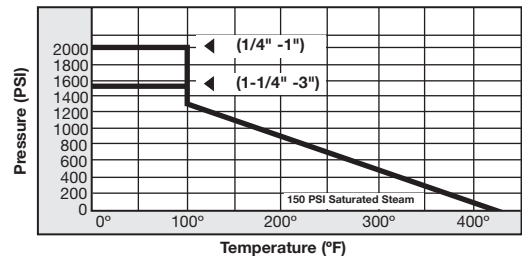
- 2-Piece Body 316 Stainless Steel
- Full Port
- Screwed End
- Blowout-Proof Stem
- Adjustable Packing Nut
- Locking Level Handle
- Actuator Mounting Pad
- 2000 PSI (138 bar) WOG (See Chart)
- Threads to ANSI B2.1
- Size Range 1/4" to 3" NPT



Dimensional Information



Pressure / Temp. Rating



Inch (mm)

Stauff #	Size (NPT)	A	B	C	D	E
2BVM20041144C/LD	1/4" NPT	2.17 (55,0)	1.89 (48,0)	4.72 (120,0)	1.12 (28,5)	0.50 (12,7)
2BVM20061144C/LD	3/8" NPT	2.17 (55,0)	1.89 (48,0)	4.72 (120,0)	1.12 (28,5)	0.50 (12,7)
2BVM20081144C/LD	1/2" NPT	2.40 (61,0)	1.93 (49,0)	4.72 (120,0)	1.12 (28,5)	0.50 (12,7)
2BVM20121144C/LD	3/4" NPT	3.15 (80,0)	2.17 (55,0)	5.12 (130,0)	1.38 (35,0)	0.87 (22,1)
2BVM20161144C/LD	1" NPT	3.50 (89,0)	2.72 (69,0)	6.10 (155,0)	1.38 (35,0)	0.87 (22,1)
2BVM20201144C/LD	1-1/4" NPT	3.78 (96,0)	3.03 (77,0)	6.10 (155,0)	1.50 (38,0)	0.93 (23,6)
2BVM20241144C/LD	1-1/2" NPT	4.61 (117,0)	3.31 (84,0)	7.28 (185,0)	1.50 (38,0)	0.93 (23,6)
2BVM20321144C/LD	2" NPT	5.51 (140,0)	3.66 (93,0)	7.28 (185,0)	1.50 (38,0)	0.93 (23,6)
2BVM20401144C/LD	2-1/2" NPT	6.50 (165,0)	5.43 (138,0)	9.84 (250,0)	2.17 (55,0)	1.38 (35,0)
2BVM20481144C/LD	3" NPT	7.56 (192,0)	6.10 (155,0)	11.02 (280,0)	2.17 (55,0)	1.38 (35,0)

Note - Designs and materials are subject to change without notice.

Specifications

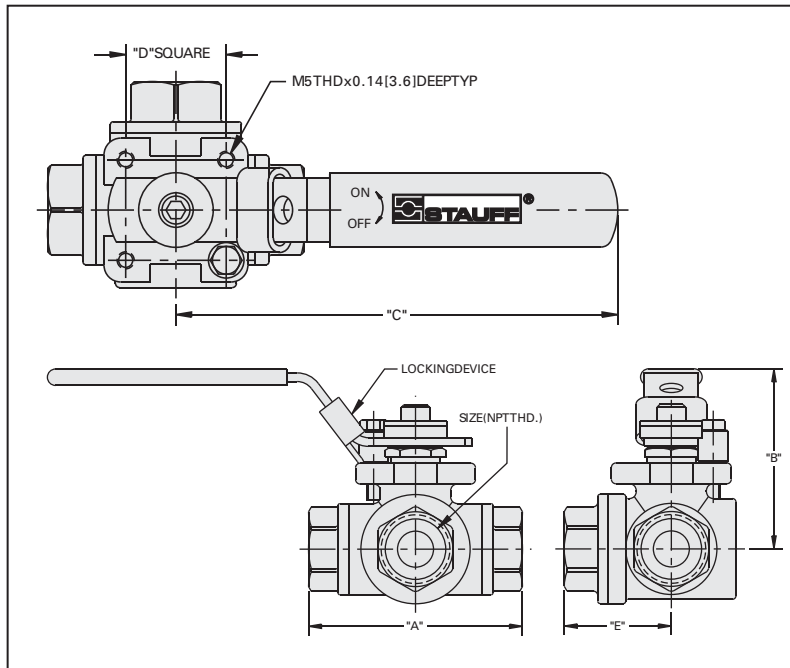
- 2 Piece Stainless Body, Diverter Style
- "L" Bore
- Adjustable Rotary Stem Seals provide long term, leak-free operation.
- Mounting Pad allows easy and accurate mounting of actuators and position indicating devices.
- Blowout-Proof Stem Design
- Body Test Pressure: 1500 PSIG (100 bar) Hydrostatic
- Valve Design allows 360° rotation; positive position location is available at 90° increments by the valve locking device.
- Working Pressure 1000 PSI (69 bar) WOG (See Chart)
- Temperature Range: -60° to 450° F
- End Types: Threaded NPT



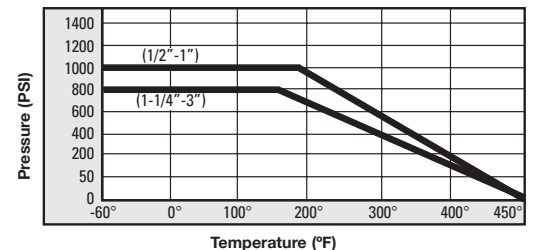
Options

- Also Available in "T" Bore

Dimensional Information



Pressure/Temp. Rating



Inch (mm)						
Stauff #	Size (NPT)	A	B	C	D	E
2BVM30081144C/LD	1/2" NPT	2.36 (60,0)	2.20 (56,0)	3.78 (96,0)	1.13 (28,7)	1.50 (38,1)
2BVM30121144C/LD	3/4" NPT	2.91 (74,0)	2.52 (64,0)	4.92 (125,0)	1.38 (35,0)	1.72 (43,7)
2BVM30161144C/LD	1" NPT	3.23 (82,0)	2.60 (66,0)	4.92 (125,0)	1.38 (35,0)	1.98 (50,3)
2BVM30241144C/LD	1-1/2" NPT	4.49 (114,0)	3.27 (83,0)	5.71 (145,0)	1.50 (38,1)	2.52 (64,0)
2BVM30321144C/LD	2" NPT	5.59 (142,0)	3.46 (88,0)	8.07 (205,0)	1.50 (38,1)	2.97 (75,4)

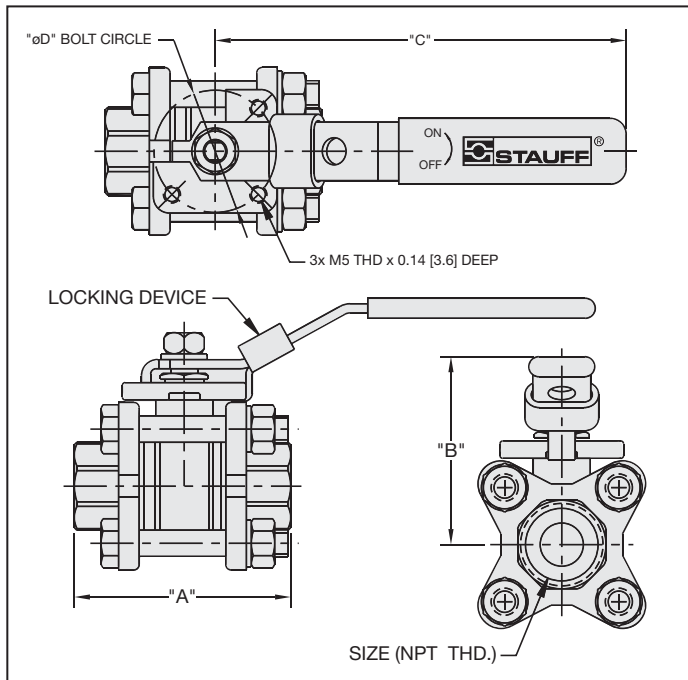
Note - Designs and materials are subject to change without notice.

Specifications

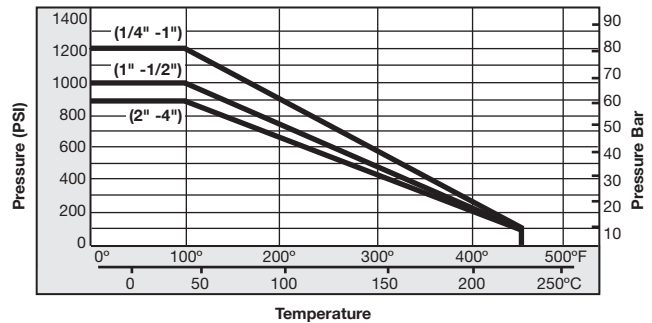
- 3-Piece Body - Tie-Rod Design
- ISO 5211 Standard Actuator Mounting Pad
- Full Port
- Blowout-Proof Stem
- Adjustable Packing Nut
- Locking Handle
- Readily Adapts to Automation
- Floating Ball
- Working Pressure -1000 PSI (69 bar) WOG (See Chart)
- Threads to ANSI B2.1
- Size Range 1/2" to 3"
- Repair Kits in Stock



Dimensional Information



Pressure / Temp. Rating



Inch (mm)

Stauff #	Size (NPT)	A	B	C	D
3BVM20081144C/LD	1/2" NPT	2.76 (70,0)	2.13 (54,0)	5.12 (130,0)	1.42 (36,0)
3BVM20121144C/LD	3/4" NPT	3.35 (85,0)	2.32 (59,0)	5.12 (130,0)	1.65 (42,0)
3BVM20161144C/LD	1" NPT	3.74 (95,0)	2.95 (75,0)	6.10 (155,0)	1.65 (42,0)
3BVM20201144C/LD	1-1/4" NPT	4.33 (110,0)	3.15 (80,0)	6.10 (155,0)	1.97 (50,0)
3BVM20241144C/LD	1-1/2" NPT	5.12 (130,0)	3.35 (85,0)	7.28 (185,0)	2.76 (70,0)
3BVM20321144C/LD	2" NPT	5.91 (150,0)	3.74 (95,0)	7.68 (195,0)	2.76 (70,0)
3BVM20481144C/LD	3" NPT	8.35 (212,0)	5.24 (133,0)	9.84 (250,0)	4.02 (102,0)

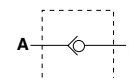
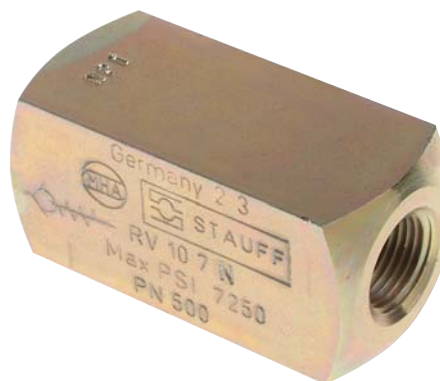
Note - Designs and materials are subject to change without notice.

Specifications

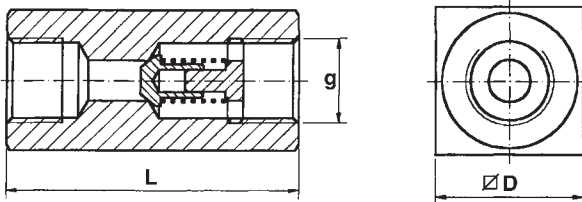
- Sizes to 2"
- Carbon Steel Body, Zinc Plated
- Working Pressure to 7250 PSI (500 bar)
- Metal to Metal Seat

Options

- NPT or SAE
- Two Spring Cracking Pressures - 7 PSI (0.5 bar) or 65 PSI (4.5 bar)
- Special Spring Cracking Pressures Available On Request



Dimensional Information

												
Nominal Size	DN		Port G		Operating Pressure		D		L		Weight	
	mm	in	NPT	SAE	Bar	PSI	mm	in	mm	in	kg	lbs
RV8	8	0.31	1/4"NPT	7/16"-20	500	7250	25	.98	55	2.17	0.2	0.44
RV10	10	0.39	3/8"NPT	9/16"-18	500	7250	30	1.18	65	2.56	0.4	0.88
RV12	12	0.47	1/2"NPT	3/4"-16	500	7250	35	1.38	73	2.87	0.7	1.54
RV16	16	0.63	3/4"NPT	1 1/16"-12	500	7250	45	1.77	88	3.46	1.2	2.64
RV20	20	0.79	1"NPT	1 5/16"-12	500	7250	50	1.97	127	5.00	2	4.4
RV25	25	0.98	1 1/4"NPT	1 5/8"-12	400	5800	60	2.36	143	5.63	3.3	7.26
RV30	30	1.18	1 1/2"NPT	1 7/8"-12	315	4500	70	2.75	143	5.63	4.2	9.24
RV40	40	1.57	2"NPT	2 1/2"-12	315	4500	90	3.54	165	6.49	7.2	15.84

Ordering Information

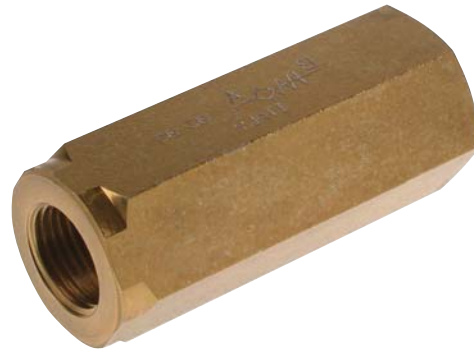
Product Type RV – Check Valve		Thread Type N NPT S SAE	
Port Size 8 1/4" 10 3/8" 12 1/2" 16 3/4" 20 1" 25 1 1/4" 30 1 1/2" 40 2"		Spring Setting 7 7 PSI (0.5 Bar) 65 65 PSI (4.5 Bar)	

Specifications

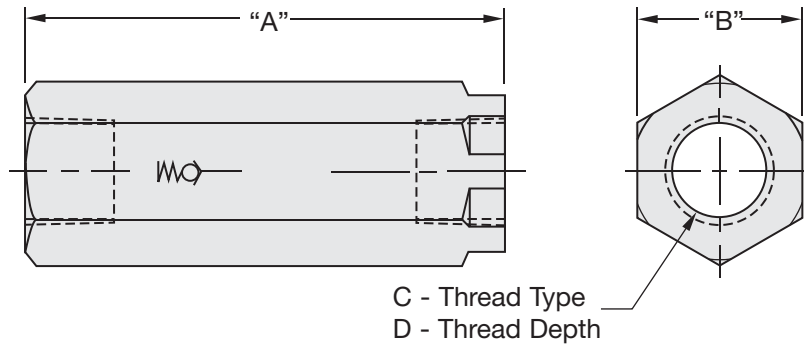
- Sizes to 3/4" NPT
- Carbon Steel Body, Zinc Plated
- Working Pressure to 5000 PSI (350 bar)
- Metal to Metal Seat

Options

- Field replaceable springs available with 30 PSI or 60 PSI settings



Dimensional Information



Part Number	A - Length		B - Width		C - Port Diameter	D - Thread Depth		Operating Pressure		Weight	
	mm	in	mm	in		mm	in	Bar	PSI	kg	lbs
RVM8-7N	63.0	2.48	22	0.87	1/4" NPT	12.5	0.49	350	5000	0.2	0.44
RVM10-7N	69.0	2.71	27	1.06	3/8" NPT	12.5	0.49	350	5000	0.4	0.88
RVM12-7N	80.5	3.17	32	1.26	1/2" NPT	15.5	0.61	350	5000	0.7	1.54
RVM16-7N	99.5	3.92	36	1.42	3/4" NPT	17.0	0.67	350	5000	1.2	2.64

Ordering Information

Product Type		Thread Type	
RVM - Check Valve		N NPT	
Port Size		Spring Setting	
8	1/4" NPT	7	7 PSI (0.5 Bar) Standard
10	3/8" NPT	30	30 PSI (2.0 Bar)
12	1/2" NPT	60	60 PSI (4.0 Bar)
16	3/4" NPT		

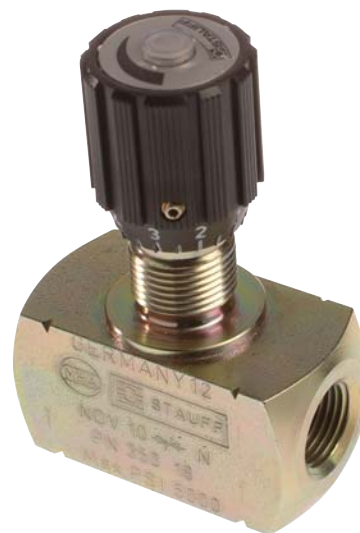
REPLACEMENT SPRINGS	
Part #	Description
RVM-8-30	30 PSI Spring
RVM-8-60	60 PSI Spring
RVM-10-30	30 PSI Spring
RVM-10-60	60 PSI Spring
RVM-12-30	30 PSI Spring
RVM-12-60	60 PSI Spring
RVM-16-30	30 PSI Spring
RVM-16-60	60 PSI Spring

Specifications

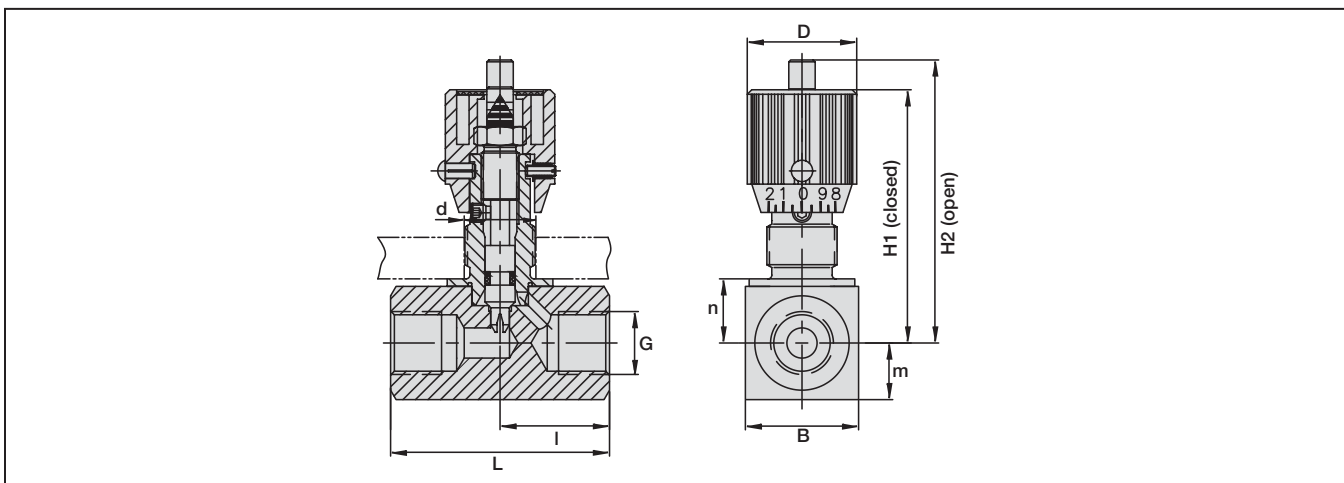
- Sizes to 1½"
- Carbon Steel Body, Zinc Plated
- Viton "O"-Ring
- Temperature Range 14°F – 212°F
(-10°C – 100°C)
- Working Pressure to 5000 PSI (350 bar)
- Graduated Knob and Color Coded Spindle To Accurately Control Flow
- Set-Screw Located On Side Of Knob To Lock Valve In Position

Options

- NPT or SAE Threaded Connection
- Panel Mounting Kit Available (See Page V56)
- Special Seals Available On Request



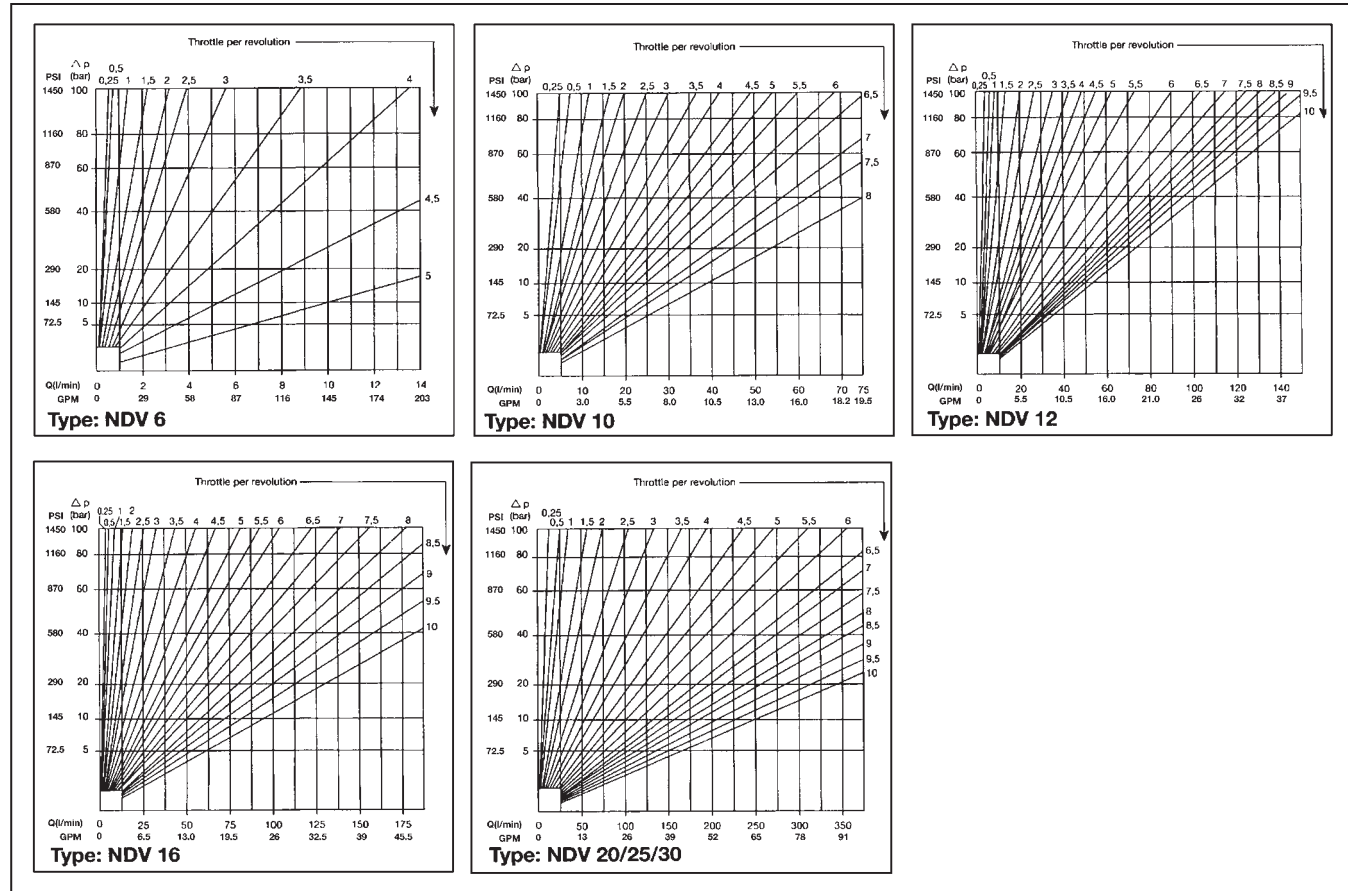
Dimensional Information



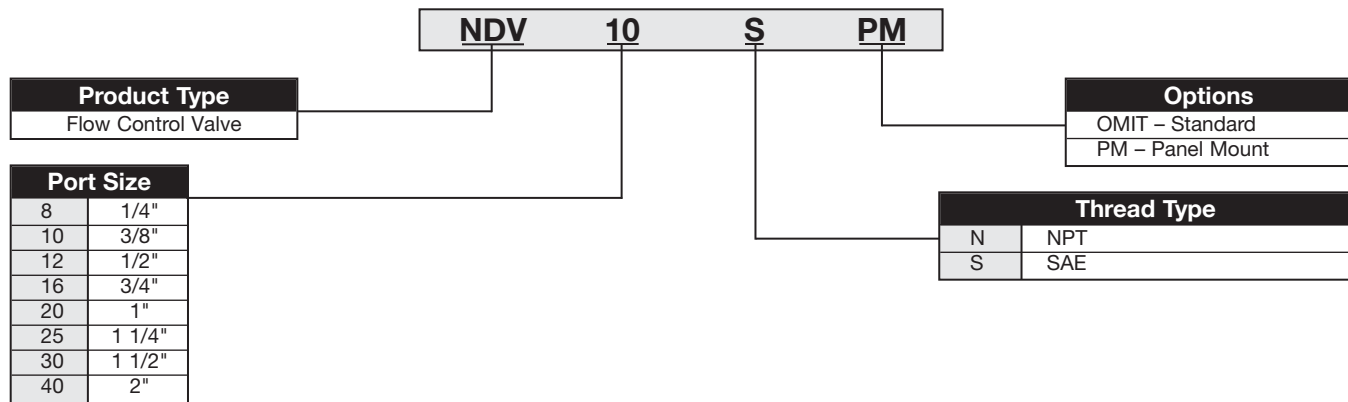
Nominal Size	DN		Port G		Operating Pressure		H2 Open		H1 Closed		m		n		B		I		L		D		d		Weight	
	mm	in	NPT	SAE	BAR	PSI	mm	in	mm	in	mm	in	mm	in	mm	in	mm	in	mm	in	mm	in	mm	in	kg	lbs
NDV8	8	0.31	¼" NPT	¼"-20	350	5000	71	2.80	65	2.56	12,5	0.49	14,5	0.57	25	0.98	33,5	0.94	55	1.89	29	1.14	19	0.75	0.25	0.55
NDV10	10	0.39	½" NPT	½"-18	350	5000	75	2.95	68	2.68	15	0.59	17	0.67	30	1.18	41	1.14	65	2.28	29	1.14	19	0.75	0.40	0.88
NDV12	12	0.47	½" NPT	½"-16	350	5000	92	3.62	82	3.23	17,5	0.69	21	0.83	35	1.38	44	1.34	73	2.68	38	1.50	23	0.91	0.70	1.54
NDV16	16	0.63	¾" NPT	1½"-12	350	5000	106	4.17	96	3.78	22,5	0.89	26	1.02	45	1.77	57	1.54	88	3.07	38	1.50	23	0.91	1.20	2.64
NDV20	20	0.79	1" NPT	1½"-12	350	5000	149	5.87	132	5.20	25	0.98	30	1.18	50	1.97	77	2.13	127	4.25	55	2.17	38	1.50	2.10	4.62
NDV25	25	0.98	1½" NPT	1½"-12	350	5000	154	6.06	137	5.39	30	1.18	35	1.38	60	2.36	93	3.66	143	5.62	55	2.17	38	1.50	2.80	6.16
NDV30	30	1.18	1½" NPT	1½"-12	350	5000	159	6.26	142	5.59	35	1.38	40	1.57	70	2.75	91	3.58	143	5.62	55	2.17	38	1.50	3.50	7.70

Technical Information

Pressure Drop/Flow Information



Ordering Information

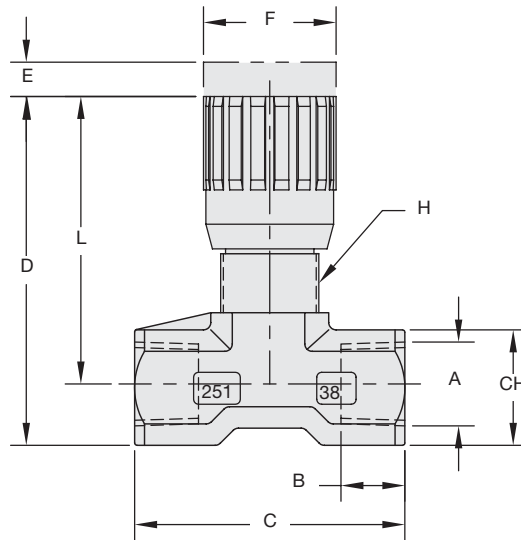
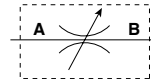


Specifications

- Sizes to 1/4", 3/8" and 1/2" NPT, SAE
- Working Pressure 5000 PSI (350 bar)
- Nickel Plated Carbon Steel Body, Stainless Steel Needle
- Flow Setting Can Be Locked With Handle Set Screw
- Stem Seal-Buna with PTFE Back Up Ring
- Temperature range: -30°F to 250°F (-34°C to 121°C)

Options

- VITON Seals
- Panel Mount Lock Nut (See Page V56)
- BSP Ports Available



Dimensions

Part Number	Thread A	B		C		D		E		F		Thread H	L		Square CH		Weight	
		mm	in	mm	in	mm	in	mm	in	mm	in		mm	in	mm	in	kg	lbs
NVH-8N NVH-8S	1/4" NPT 1/4" SAE	12	0.47	46	1.81	61	2.40	4,5	0.18	22	0.87	M17X1	52,5	2.07	17	0.67	0.12	0.26
NVH-10N NVH-10S	3/8" NPT 3/8" SAE	13	0.51	55	2.17	74	2.91	7	0.28	27	1.06	M20X1	63	2.48	22	0.97	0.23	0.51
NVH-12N NVH-12S	1/2" NPT 1/2" SAE	16	0.63	82	2.76	85,5	3.37	10	0.39	33	1.30	M25X1,5	72	2.83	27	1.06	0.45	1.0

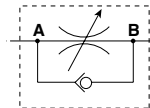
Specifications

- Sizes to 2"
- Carbon Steel Body, Zinc Plated
- 7 PSI Standard Spring Setting
- Viton O-Ring
- Temperature Range: 14°F – 212°F (-10°C – 100°C)
- Working Pressure to 5000 PSI (350 bar)
- Graduated Knob and Color Coded Spindle To Accurately Control Flow
- Set-Screw Located On Side Of Knob To Lock Valve In Position

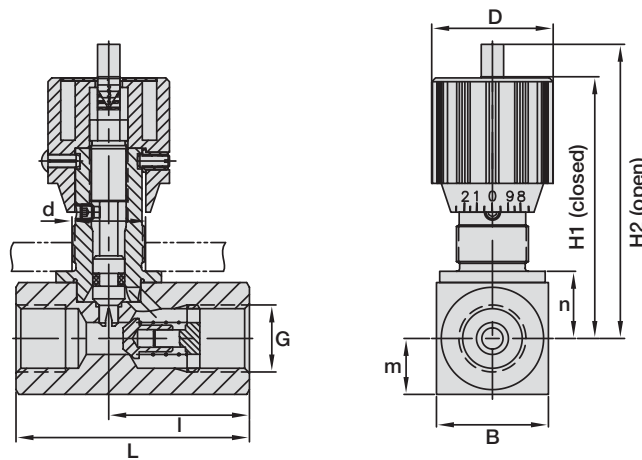


Options

- NPT or SAE Threaded Connection
- Panel Mounting Kit Available (See Page V56)
- Special Seals Available Upon Request
- Special Spring Settings Upon Request



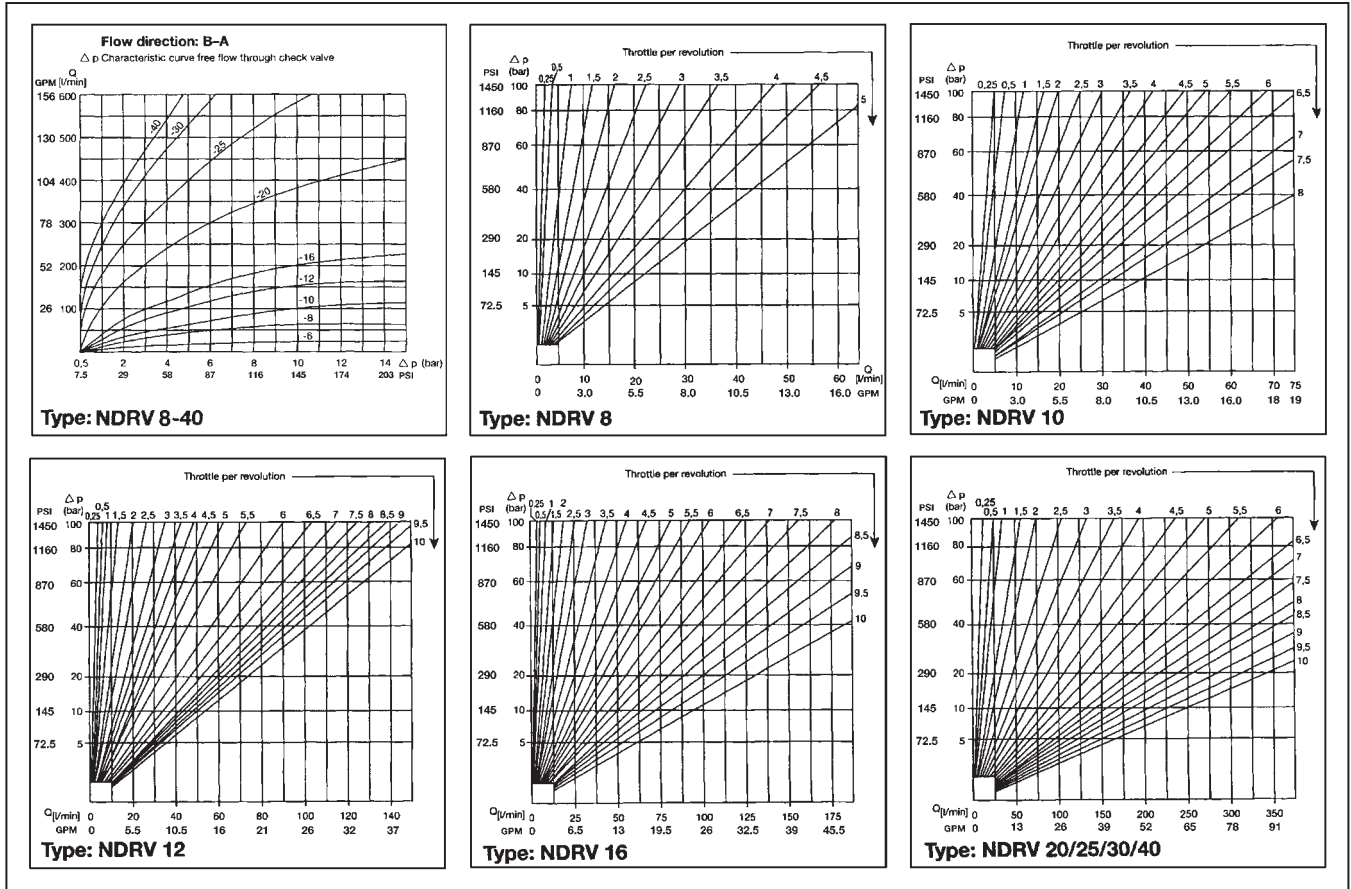
Dimensional Information



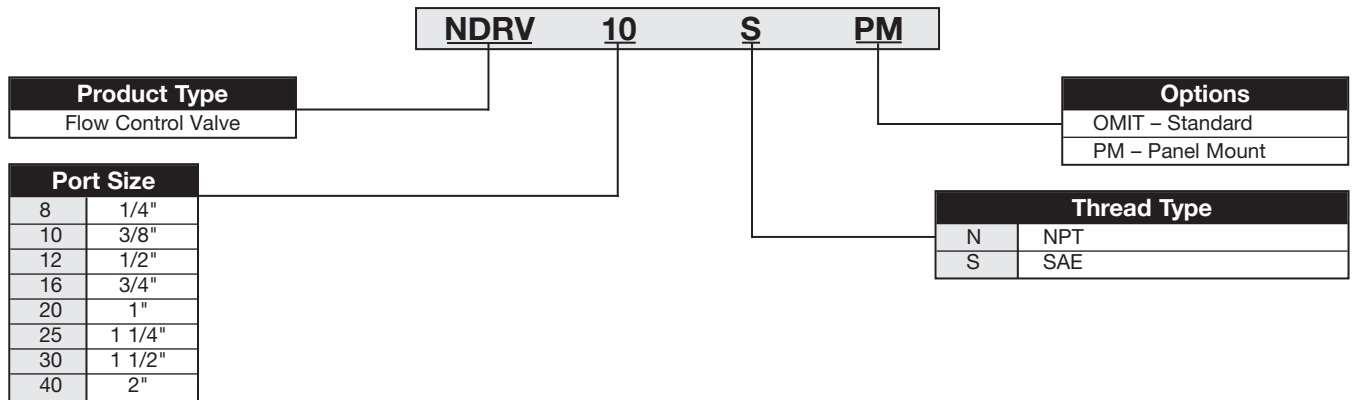
Nominal Size	DN		Port G		Operating Pressure		H2 Open		H1 Closed		m		n		B		I		L		D		d		Weight	
	mm	in	NPT	SAE	BAR	PSI	mm	in	mm	in	mm	in	mm	in	mm	in	mm	in	mm	in	mm	in	mm	in	kg	lbs
NDRV8	8	0.31	¼" NPT	¼"-20	350	5000	71	2.80	65	2.56	12,5	0.49	14,5	0.57	25	0.98	33,5	0.94	55	1.89	29	1.14	19	0.75	0.30	0.66
NDRV10	10	0.39	¼" NPT	¼"-18	350	5000	75	2.95	68	2.68	15	0.59	17	0.67	30	1.18	41	1.14	65	2.28	29	1.14	19	0.75	0.45	0.99
NDRV12	12	0.47	½" NPT	½"-16	350	5000	92	3.62	82	3.23	17,5	0.69	21	0.83	35	1.38	44	1.34	73	2.68	38	1.50	23	0.91	0.80	1.76
NDRV16	16	0.63	¾" NPT	1½"-12	350	5000	106	4.17	96	3.78	22,5	0.89	26	1.02	45	1.77	57	1.54	88	3.07	38	1.50	23	0.91	1.30	2.86
NDRV20	20	0.79	1" NPT	1½"-12	350	5000	149	5.87	132	5.20	25	0.98	30	1.18	50	1.97	77	2.13	127	4.25	55	2.17	38	1.50	2.40	5.28
NDRV25	25	0.98	1½" NPT	1½"-12	350	5000	154	6.06	137	5.39	30	1.18	35	1.38	60	2.36	93	3.66	143	5.62	55	2.17	38	1.50	3.50	7.7
NDRV30	30	1.18	1½" NPT	1½"-12	350	5000	159	6.26	142	5.59	35	1.38	40	1.57	70	2.75	91	3.58	143	5.62	55	2.17	38	1.50	4.60	10.12
NDRV40	40	1.57	2" NPT	2½"-12	350	5000	169	6.65	152	5.98	40	1.57	50	1.97	90	3.55	111	4.37	165	6.50	55	2.17	38	1.50	7.70	16.94

Technical Information

Pressure Drop/Flow Information



Ordering Information

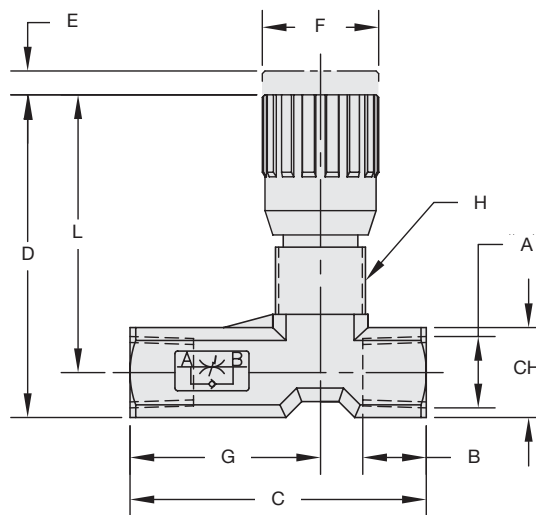
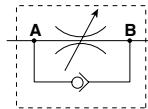


Specifications

- Sizes to 1/4", 3/8" and 1/2"
- NPT or SAE Threads
- Working Pressure 5000 PSI (350 bar)
- Nickel Plated Carbon Steel Body, Stainless Steel Needle
- Flow Setting Can Be Locked With Handle Set Screw
- Stem Seal-Buna With PTFE Back Up Ring
- Temperature range: -30°F to 250°F (-34°C to 121°C)

Options

- VITON Seals
- Panel Mount Lock Nut (See Page V56)
- BSP Ports Available



Dimensions

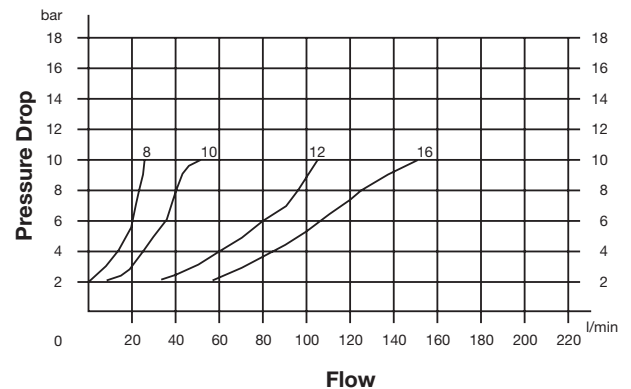
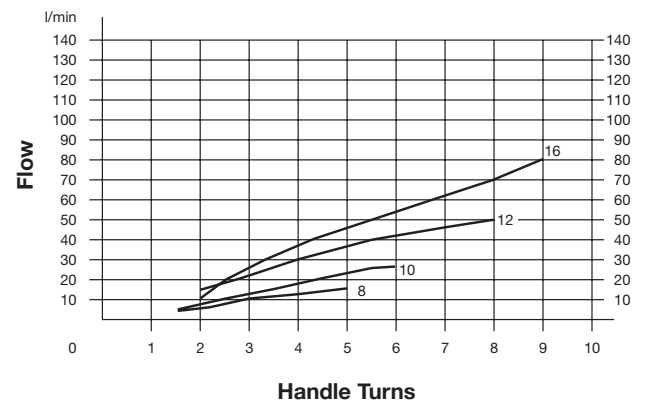
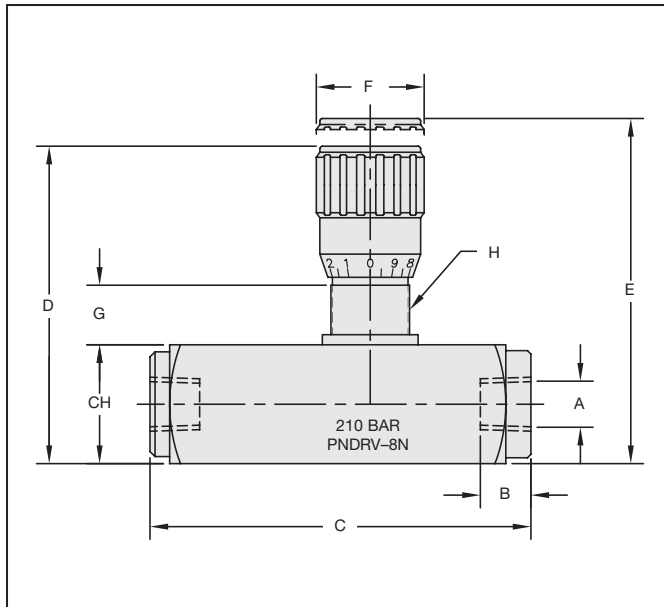
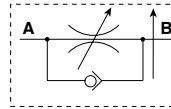
Part Number	Thread A	B	C	D	E	F	G	H	L	CH	Weight
		mm in	mm in	mm in	mm in	mm in	mm in		mm in	mm in	
FCH-8N FCH-8S	1/4" NPT 1/4" SAE	12 0.47	56 2.20	61 2.40	4,5 0.18	22 0.87	36 1.42	M17X1	52,5 2.07	17 0.67	0.14 0.31
FCH-10N FCH-10S	3/8" NPT 3/8" SAE	13 0.51	64,5 2.54	74 2.91	7 0.28	27 1.06	41,5 1.63	M20X1	63 2.48	22 0.97	0.26 0.57
FCH-12N FCH-12S	1/2" NPT 1/2" SAE	16 0.63	87 3.42	85,5 3.37	10 0.39	33 1.30	57 2.24	M25X1,5	72 2.83	27 1.06	0.49 1.08

Specifications

- Sizes to 1/4", 3/8", 1/2" and 3/4" NPT
- Working Pressure 3000 PSI (200 bar)
- Carbon Steel Body, Stainless Steel Internal Components
- Stem Seal-Buna With PTFE Back Up Ring
- Temperature range: -30°F to 250°F (-34°C to 121°C)

Options

- VITON Seals
- Panel Mount Lock Nut (See Page V56)



Dimensions

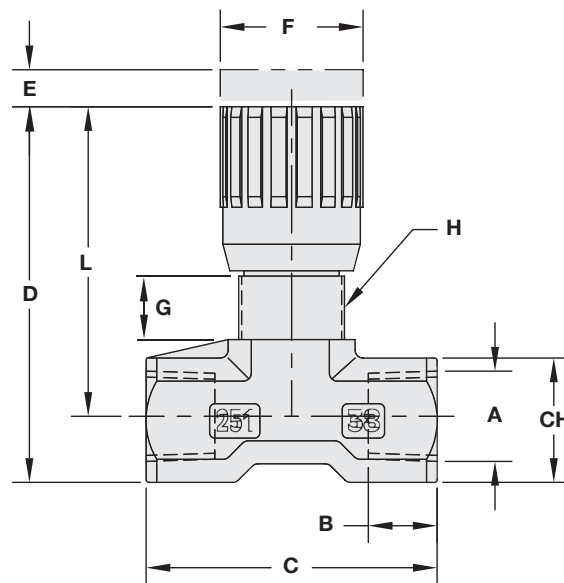
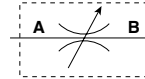
Part Number	Thread A	B	C	D	E	F	G	Thread H	CH	Weight
		in mm	in mm	in mm	in mm	in mm	in mm		in mm	lb kg
PNDRV-8N PNDRV-8S	1/4" NPT SAE-4	0.49 12,5	3.70 94	3.21 81,5	3.48 88,5	1.06 27	0.59 15	M20X1 M20X1	1.18 30	1.28 0.58
PNDRV-10N PNDRV-10S	3/8" NPT SAE-6	0.51 13	4.35 110,5	3.72 94,5	4.06 103	1.30 33	0.67 17	M25X1,5 M25X1,5	1.38 35	2.07 0.94
PNDRV-12N PNDRV-12S	1/2" NPT SAE-8	0.61 15,5	5.39 137	4.41 112	4.80 122	1.50 38	0.71 18	M20X1,5	1.77 45	4.03 1.83
PNDRV-16N PNDRV-16S	3/4" NPT SAE-12	0.67 17	6.42 163	5.43 138	5.91 150	1.85 47	0.94 24	M40X1,5 M40X1,5	2.17 55	7.37 3.35

Specifications

- Sizes to 1/4", 3/8" and 1/2" NPT, SAE, and BSP
- Working Pressure 3000 PSI (200 bar)
- Nickel Plated Brass Body, Stainless Steel Needle
- Flow Setting Can Be Locked With Handle Set Screw
- Stem Seal-Buna with PTFE Back Up Ring
- Temperature range: -30°F to 250°F (-34°C to 121°C)

Options

- VITON Seals
- Panel Mount Lock Nut (See Page V56)



Dimensions

Part Number	Thread A	B		C		D		E		F		G		H	L		CH		Weight	
		mm	in	mm	in	mm	in	mm	in	mm	in	mm	in		mm	in	mm	in	kg	lb
NVM-8B	1/4" BSP	12		46		57		4,5		22		11,5		M17X1	11		17		0.12	
NVM-8N	1/4" NPT																			
NVM-8S	-4 SAE		0.47		1.81		2.24		0.18		0.87		0.45			0.43		0.67		0.26
NVM-10B	3/8" BSP	13		55		69		7		27		12,5		M20X1	15		22		0.23	
NVM-10N	3/8" NPT																			
NVM-10S	-6 SAE		0.51		2.17		2.72		0.28		1.06		0.49			0.59		0.97		0.51
NVM-12B	1/2" BSP	16		70		82		10		33		13		M25X1,5	19		27		0.45	
NVM-12N	1/2" NPT																			
NVM-12S	-8 SAE		0.63		2.76		3.23		0.39		1.30		0.51			0.75		1.06		1.0

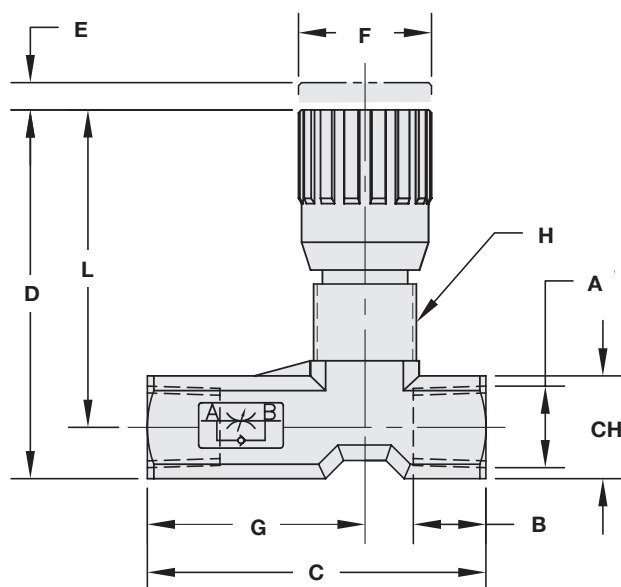
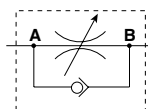
* Consult factory for delivery on SAE, BSP Threads.

Specifications

- Sizes to 1/4", 3/8" and 1/2"
- NPT or BSP Threads
- Working Pressure 3000 PSI (200 bar)
- Nickel Plated Brass Body, Stainless Steel Needle
- Flow Setting Can Be Locked With Handle Set Screw
- Stem Seal-Buna With PTFE Back Up Ring
- Temperature range: -30°F to 250°F
(-34°C to 121°C)

Options

- VITON Seals
- Panel Mount Lock Nut (See Page V56)



Dimensions

Part Number	Thread A	B		C		D		E		F		G		H	L		CH		Weight	
		mm	in	mm	in	mm	in	mm	in	mm	in	mm	in		mm	in	mm	in	kg	lb
FCM-8N	1/4" NPT	12		56		57		4,5		22		11,5		M17X1	11		17		0.14	
FCM-8B	1/4" BSP																			
FCM-8S	-4 SAE		0.47		2.20		2.24		0.18		0.87		0.45			0.43		0.67		0.31
FCM-10N	3/8" NPT	13		64,5		69		7		27		12,5		M20X1	15		22		0.26	
FCM-10B	3/8" BSP																			
FCM-10S	-6 SAE		0.51		2.54		2.72		0.28		1.06		0.49			0.59		0.97		0.57
FCM-12N	1/2" NPT	16		87		82		10		33		13		M25X1,5	19		27		0.49	
FCM-12B	1/2" BSP																			
FCM-12S	-8 SAE		0.63		3.42		3.23		0.39		1.30		0.51			0.75		1.06		1.08

* Consult factory for delivery on SAE, BSP Threads.

Size	Valve Part Number	Thread Size	Part Number
1/4"	NDV+NDRV8	PG11	PMK-8-10-M
3/8"	NDV+NDRV10	PG11	PMK-8-10-M
1/2"	NDV+NDRV12	PG16	PMK-12-16-M
3/4"	NDV+NDRV16	PG16	PMK-12-16-M
1"	NDV+NDRV20	PG29	PMK-20-40-M
1-1/4"	NDV+NDRV25	PG29	PMK-20-40-M
1-1/2"	NDV+NDRV30	PG29	PMK-20-40-M
2"	NDV+NDRV40	PG29	PMK-20-40-M
1/4"	FCM, FCH & NVM, NVH - 8	M17X1.0	PMK-8-T
3/8"	FCM, FCH & NVM, NVH - 10	M20X1.0	PMK-810-T
1/2"	FCM, FCH & NVM, NVH - 12	M25X1.5	PMK-1012-T
1/4"	PNDRV 8N+S	M20X1.0	PMK-810-T
3/8"	PNDRV 10N+12S	M25X1.5	PMK-1012-T
1/2"	PNDRV 12N	M30X1.0	PMK-1212-T
3/4"	PNDRV 16N-S	M50X1.5	PMK-1616-T

Specifications

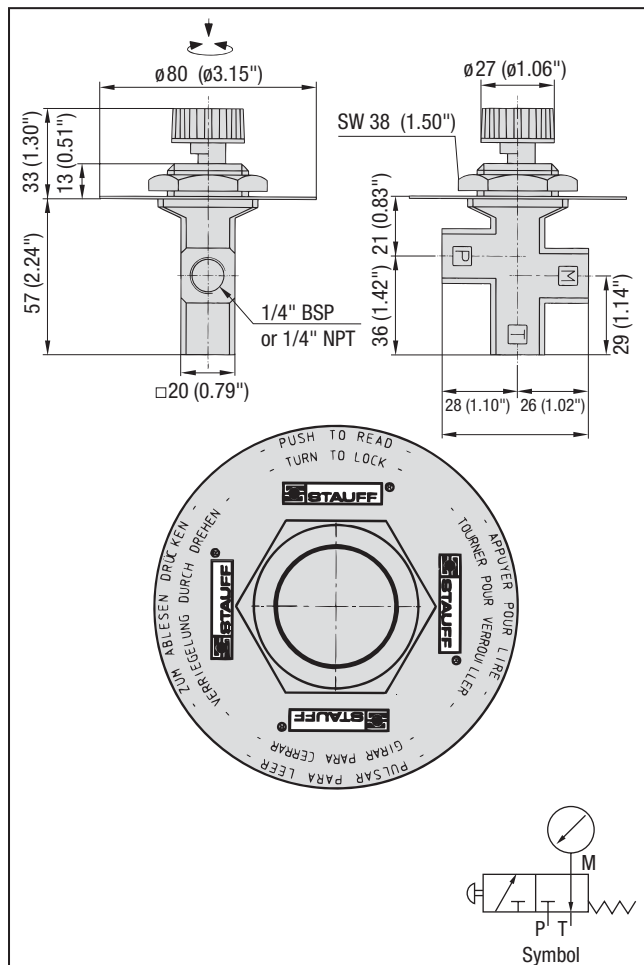
- Working Pressure 5800 PSI (390 bar)
- VITON Seals
- NPT, BSP & SAE Ports
- Temperature range:
Style S1 and M -30°F – 240°F
(-22°C – 115°C)
- Protects Gauges From Pressure Surges
- Steel Body
- Tank Drain Port

Options

- Single Station – S1 Series
- Multi Station – M Series



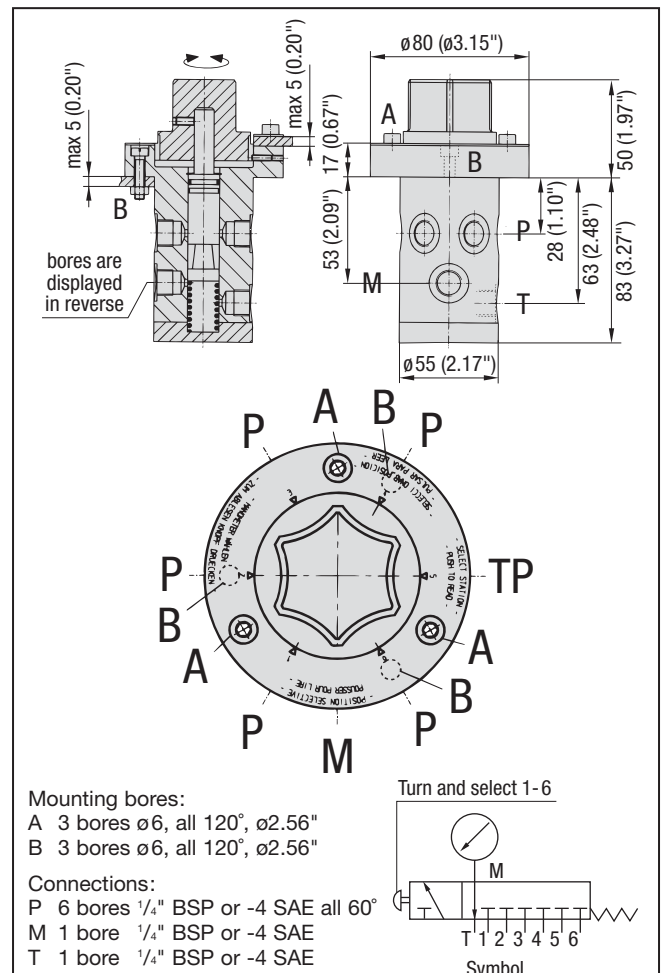
Single Station Dimensions



Single station gauge isolator valve

Part Number	Connection
SWS-B04-S1	1/4" BSP
SWS-N04-S1	1/4" NPT (Standard)

6 Station Dimensions



Mounting bores:

A 3 bores $\phi 6$, all 120°, $\phi 2.56"$

B 3 bores $\phi 6$, all 120°, $\phi 2.56"$

Connections:

P 6 bores 1/4" BSP or -4 SAE all 60°

M 1 bore 1/4" BSP or -4 SAE

T 1 bore 1/4" BSP or -4 SAE

Multi station gauge isolator valve

Part Number	Connection
SWS-B04-M	1/4" BSP
SWS-U04-M	-4 SAE (Standard)

Specifications

- Sizes 1/4" NPT
- Working Pressure 6000 PSI (400 bar)
- Nickel Plated brass Body
- Stem Seal-Buna With PTFE Back Up Ring

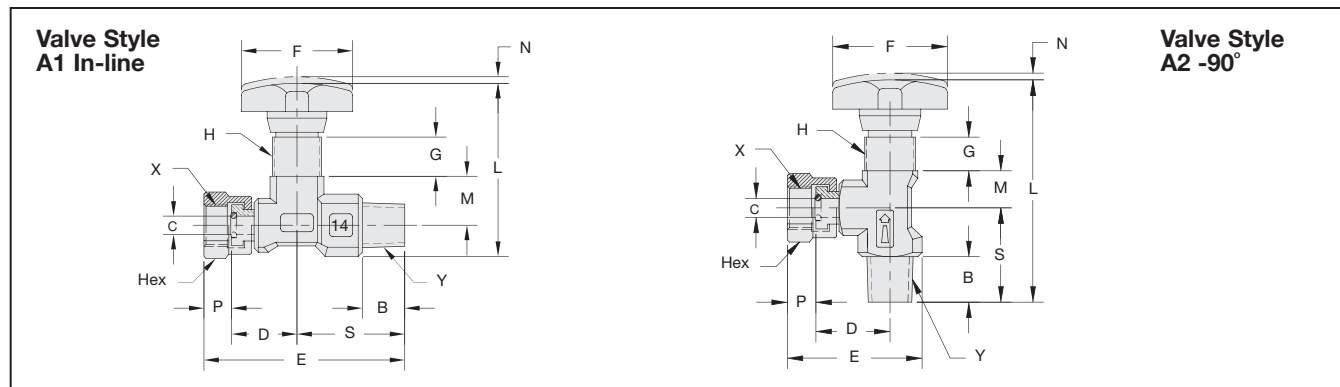
Options

- In line or 90° Style
- NPT/SAE Version
- Panel Mount Lock Nut



Dimensions

Thread	Valve Style	Port Female X	Port Male Y	B	C	D	E	F	G	H	L	M	N	P	S	Hex	Weight
				mm in	mm in	mm in	mm in	mm in	mm in		mm in	mm in	mm in	mm in	mm in	mm in	mm in
S04	A1	1/4" NPT FEMALE	1/4" SAE MALE	13	5,6	20	61,5	34	12	M15X1	53	15	2	8,5	33	18	0,13
N04		1/4" NPT	1/4" NPT	0.51	0.22	0.78	2.42	1.34	0.47		2.09	0.59	0.08	0.33	1.30	0.71	0.28
B04		1/4" BSP	1/4" BSP														
B04	A2	1/4" BSP	1/4" BSP	13,5	5,6	22	40	34	10	M15X1	66	11	2	8,5	28	18	0,11
N04		1/4" NPT	1/4" NPT	0.53	0.22	0.87	1.57	1.34	0.39		2.60	0.43	0.08	0.33	1.10	0.71	0.23



Ordering Information

		SWS		N04		A1	
Product Type							
SWS-Gauge Isolator Valve							
Thread Type							
N04	1/4" NPT Female - 1/4" NPT Male						
S04	1/4" NPT Female - 1/4" SAE Male						
B04	1/4" BSP Female - 1/4" BSP Male						

* Consult factory for delivery on BSP Threads.

NOTE: S04 only available in in-line version



CLAMPS

TEST

DIAGNOSTICS

FILTRATION

ACCESSORIES

BALL VALVES



Local Solutions for Individual Customers Worldwide

For The Answers You Need, Contact Us ...

At Stauff, we're here to serve you.

We're committed to providing the best customer service in the industry.

Here are the e-mail links to key people and departments. Just click on the link to send an e-mail any time day or night.

Tell us what you need and we'll respond.

You'll get the answers you need from the people who know how to make it happen.

ADMINISTRATION/EMPLOYMENT

admin@stauffusa.com

CUSTOMER SERVICE

customerservice@stauffusa.com

LITERATURE/MARKETING/TRADE SHOWS/PRODUCT INFORMATION

sales@stauffusa.com

ENGINEERING/PRODUCT SUPPORT

Clamp Products

clamps@stauffusa.com

Valves, Test, Accessories

valves@stauffusa.com

Filters, Filtration Accessories, Flowmeters

filtertech@stauffusa.com

COMPUTER OPERATIONS

mis@stauffusa.com

QUALITY ISSUES

quality@stauffusa.com

Stauff Corporation

Phone: 201-444-7800

www.stauffusa.com

Stauff Canada Ltd.

Phone: 416-282-4608

www.stauffcanada.com





CLAMPS

TEST

DIAGNOSTICS

FILTRATION

ACCESSORIES

BALL VALVES



Local Solutions for Individual Customers Worldwide

Navigation Help

Use the Acrobat toolbar buttons to quickly navigate through pages. The chart describes the basic function of each button.

You may also use the bookmark navigation to the left. Just click on a bookmark to get the information desired.

Toolbar Navigation

Next Page



Navigation Tool
(for clicking on links or bookmarks)

Previous Page



Magnify
(use to enlarge type or expand video or graphics to full screen)

First page



Show/Hide Navigation Pane

Last page



View Actual Size

Go to Previous View



View to Fit in Window

Go to Next View



View to Fit Width

Tip: Always use the Previous View button to retrace your steps.